

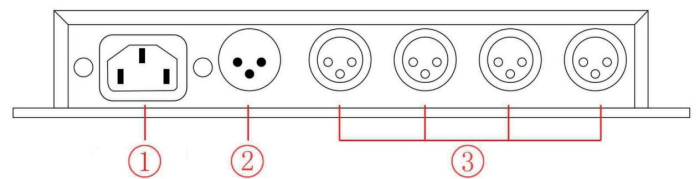
KOMDMX-SPL4 DMX Splitter



Summarization

KOMDMX-SPL4 signal distributor is one of DMX signal distributor series, is specially used for amplifying DMX512 digital lighting control signal and 4 channels allocation output. The input/output interface adopts high voltage isolation technology, applied to amplify DMX512 signal transmission in the short distance, as well as the using occasion where output/input interfaces need to be complete electrical isolation. Due to the independent isolation between input/output interface, it can avoid burning precision digital light console by the problem of the controlling circuit, decoder, computer light, silicon box and so on, to ensure the safe operation of digital lighting control, and also ensure DMX signal can normal transfer to all kinds of lighting equipment, so as to improve reliability for the whole digital lighting control system.

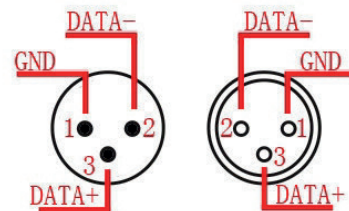
Interface Specification



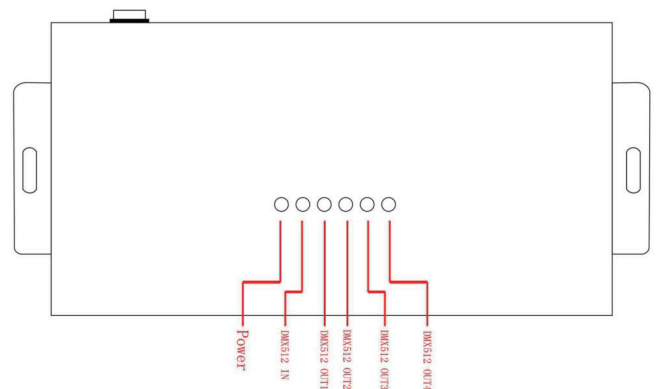
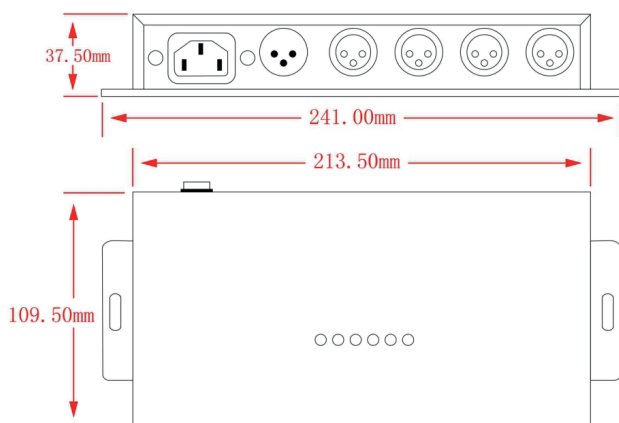
1. 100~240VAC power interface
2. DMX signal input interface
3. DMX signal output interface

Technical Parameters

Working temperature	-20-60 °C
Input voltage	AC 100 ~ 240V 50~60HZ
Rated power	4W
Input signal	1 channel DMX512 signal
Output signal	4 channel DMX512 signal output, the output port can be connected to 32 equipments mostly.
The isolation voltage between input/output interface	> 1000V
Cascade quantity	can cascade 6pcs signal amplifier mostly.
Net weight	0.7kg
Gross weight	1.1kg
External dimension	L241 x W109.5 x H37.5 mm
Packing size	L270 x W170 x H60 mm



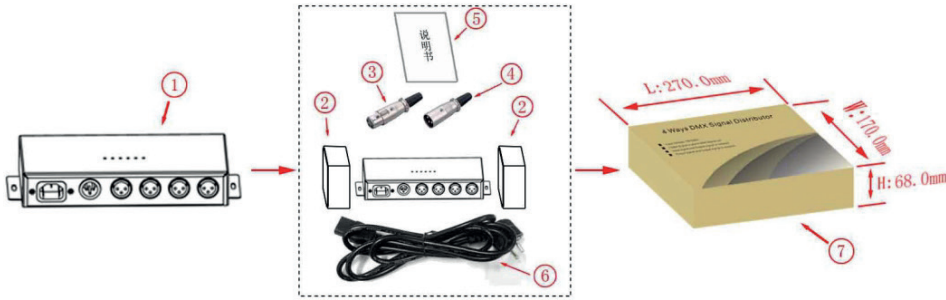
External Dimension (mm)



Power light: light is on - Power ON; Light is off - Power OFF.

- DMX512 IN light: Light is on - DMX512 signal input normal; Lights is off - DMX512 signal without input or unnormal.
- DMX512 OUT1 ~ DMX512 OUT4 light: Light is on - DMX512 signal input normal; Lights is off - DMX512 signal output failure.

KOMDMX-SPL4 DMX Splitter



1. KOMDMX-SPL4 signal distributor 1pc.
2. PE Foam
3. XLR male 2pcs.
4. XLR female 2pcs.
5. Specification 1pcs.
6. AC power line
7. Outer-package 1pc.

Direction for Use

According to the panel of DMX amplifier, to connect input and output signal wires in order to ensure short circuit does not occur between wires, and then connect power to DMX amplifier, it goes hand in hand with DMX decoder, please refer to the following typical applications.

Typical Application

