

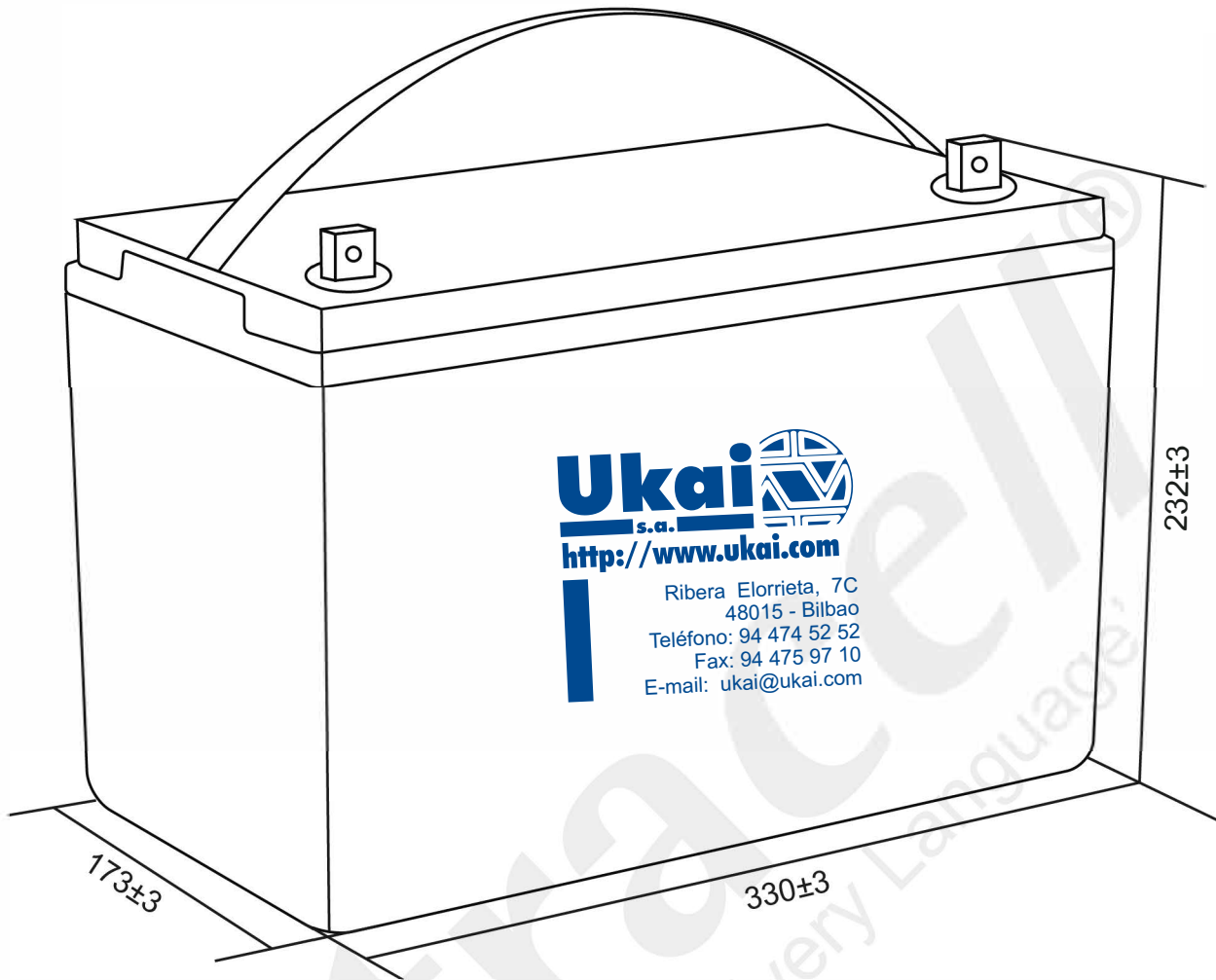
Ultracell®

'Quality in Every Language'

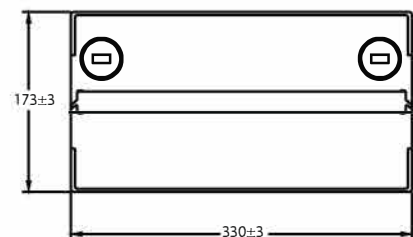
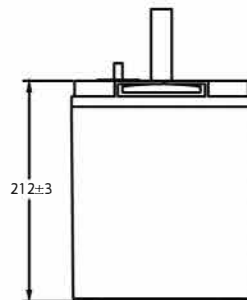
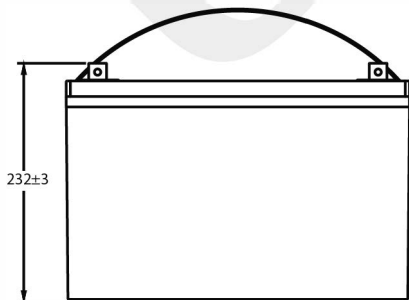
UCG100-12

12V 100Ah

Solar Series



Technical Dimensions (mm)



1

Ukai
s.a.
www.ukai.com

Ukai Bilbao
Ribera Elorrieta, 7C
48015 - Bilbao
Tlfn: 94 474 52 52
Fax: 94 475 97 10
ukai@ukai.com

Delegación Barcelona
Tlfn: 93 284 08 98
Fax: 93 210 67 65
ukaibcn@ukai.com

Delegación Madrid
Tlfn: 91 659 03 28
Fax: 91 659 05 58
ukaimad@ukai.com

Delegación Galicia
Tlfn: 651 70 49 21
ukaiglc@ukai.com



MH 29410



EMC 1188-C



IEC 60896



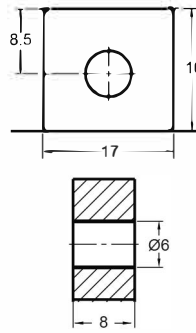
ISO 9001:2015

Image

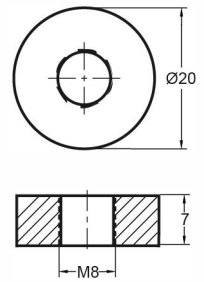


Terminal Dimensions (mm)

Standard Terminal: F10



Optional Terminal: F11



Technical Specification

| | | |
|-------------------------------------|----------------------------------|--|
| Output | Nominal Voltage | 12V |
| | Nominal Capacity (10HR) | 100Ah |
| Terminal Type | Standard Terminal | F10 |
| | Optional Terminal | F11 |
| Container Material | Standard Option | ABS |
| | Flame Retardant Option (FR) | ABS (UL94:VO) |
| Rated Capacity | (20HR 1.80V/cell, 25°C) | 103.0 Ah/5.15A |
| | (10HR 1.80V/cell, 25°C) | 100.0 Ah/10.0A |
| | (5HR 1.75V/cell, 25°C) | 85.0 Ah/17.0A |
| | (3HR 1.75V/cell, 25°C) | 73.8 Ah/24.6A |
| | (1HR 1.60V/cell, 25°C) | 59.7 Ah/59.7A |
| Max Discharge Current | 1200A (5s) | |
| Internal Resistance | Approx 5mΩ | |
| Discharge Characteristics | Operating Temp Range | Discharge: -15 ~ 50°C Charge: 0 ~ 40°C Storage: -15 ~ 40°C |
| | Nominal Operating Temp Range | 25 ± 3°C |
| | Cycle Use | Initial Charging Current less then 30A. Voltage 14.4V ~ 15.0V @ 25°C Temp. Coefficient -30mV/°C |
| | Standby Use | No limit on initial charging current. Voltage 13.5V ~ 13.8V @ 25°C Temp. Coefficient -20mV/°C |
| | Capacity affected by Temperature | 40°C 103% 25°C 100% 0°C 86% |
| Design Floating Life at 20°C | 10 Years | |

Self Discharge

Ultracell® UCG batteries may be stored for up to 6 months at 25°C and then a refresh charge is required. For higher temperatures the time intervals will be shorter.

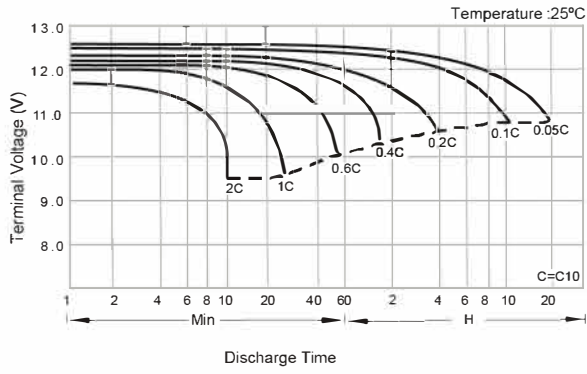
Constant Current Discharge / Constant Power Discharge At 25°C (Amperes & Watts/Cell)

A = Amperes W = Watts

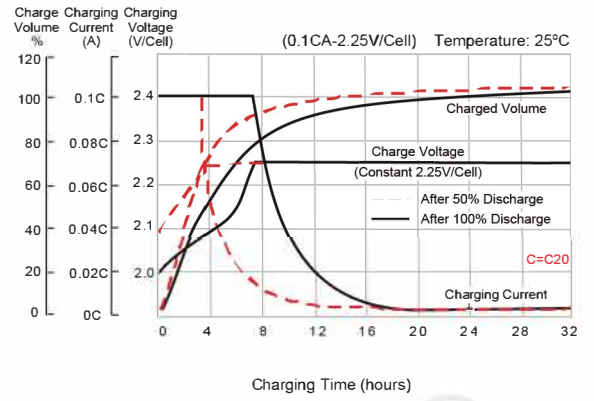
| F.V/TIME | 5 min | 10 min | 15 min | 20 min | 30 min | 45 min | 60 min | 2 hours | 3 hours | 4 hours | 5 hours | 6 hours | 8 hours | 10 hours | 20 hours |
|------------|-------|--------|--------|--------|--------|--------|--------|---------|---------|---------|---------|---------|---------|----------|----------|
| A | | | | | | | | | | | | | | | |
| W | | | | | | | | | | | | | | | |
| 1.85V/cell | 161.2 | 126.8 | 107.8 | 90.2 | 71.2 | 54.1 | 44.8 | 28.5 | 22.1 | 18.2 | 15.4 | 13.5 | 11.0 | 9.28 | 5.00 |
| | 297.0 | 235.9 | 202.7 | 171.2 | 136.5 | 104.5 | 86.8 | 55.4 | 43.2 | 35.7 | 30.4 | 26.5 | 21.7 | 18.4 | 9.94 |
| 1.80V/cell | 213.3 | 159.6 | 128.3 | 105.0 | 82.0 | 61.4 | 49.8 | 30.9 | 23.8 | 19.4 | 16.6 | 14.4 | 11.7 | 10.0 | 5.15 |
| | 389.0 | 293.8 | 238.3 | 196.7 | 155.2 | 117.7 | 96.0 | 59.9 | 46.2 | 37.8 | 32.5 | 28.4 | 23.1 | 19.8 | 10.2 |
| 1.75V/cell | 245.4 | 179.0 | 143.1 | 115.3 | 87.4 | 64.9 | 52.7 | 32.4 | 24.6 | 20.0 | 17.0 | 14.8 | 11.9 | 10.1 | 5.20 |
| | 437.8 | 324.0 | 262.2 | 213.7 | 164.0 | 123.4 | 101.1 | 62.6 | 47.7 | 38.9 | 33.2 | 29.1 | 23.4 | 20.0 | 10.3 |
| 1.70V/cell | 273.4 | 197.4 | 154.5 | 122.6 | 92.2 | 68.2 | 55.0 | 34.0 | 25.5 | 20.6 | 17.5 | 15.2 | 12.0 | 10.2 | 5.30 |
| | 473.5 | 348.6 | 278.8 | 225.2 | 171.8 | 128.9 | 105.0 | 65.5 | 49.2 | 40.0 | 34.0 | 29.6 | 23.7 | 20.1 | 10.5 |
| 1.65V/cell | 298.6 | 210.9 | 162.7 | 129.0 | 96.6 | 70.2 | 57.0 | 34.9 | 26.4 | 21.2 | 17.9 | 15.5 | 12.2 | 10.3 | 5.35 |
| | 508.8 | 368.4 | 290.7 | 234.7 | 178.2 | 131.7 | 108.1 | 66.9 | 50.9 | 41.0 | 34.7 | 30.2 | 24.0 | 20.3 | 10.6 |
| 1.60V/cell | 332.0 | 230.9 | 175.5 | 138.5 | 102.6 | 74.3 | 59.7 | 36.2 | 27.3 | 21.7 | 18.2 | 15.8 | 12.4 | 10.4 | 5.40 |
| | 552.6 | 394.1 | 308.3 | 249.3 | 187.8 | 138.3 | 112.7 | 69.0 | 52.4 | 41.8 | 35.2 | 30.8 | 24.3 | 20.6 | 10.7 |



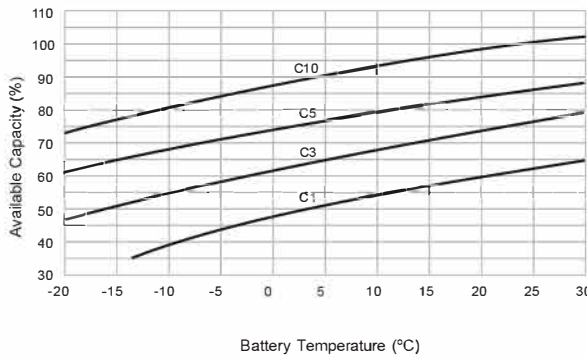
Discharge Characteristics



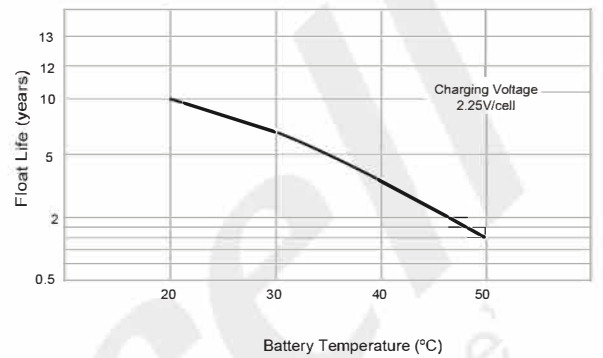
Float Charging Characteristics



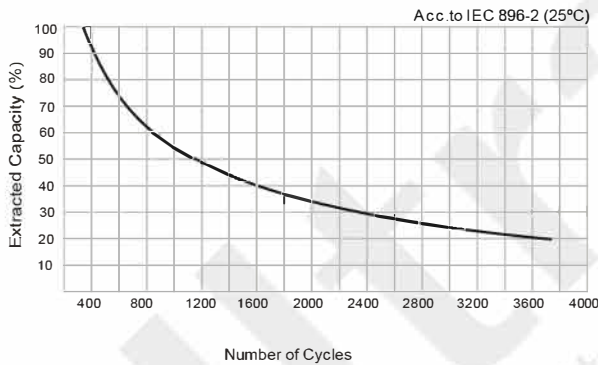
Temperature Effects in Relation to Battery Capacity



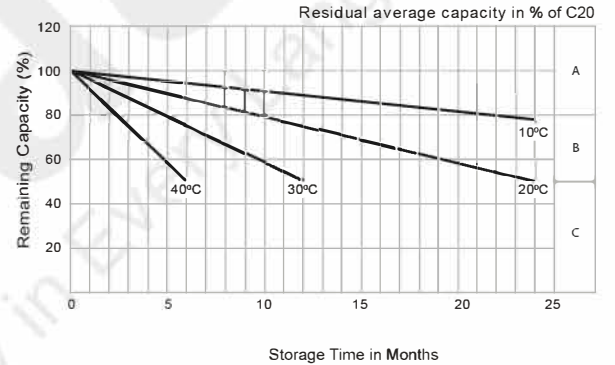
Effect of Temperature on Long Term Float Life



Cycle Life in Relation to Depth of Discharge



General Relation of Capacity vs. Storage Time



Constant Current Discharge / Constant Power Discharge At 25°C (Amperes & Watts/Cell)

- A) No supplementary charge required.
(Carryout supplementary charge before use if 100% capacity is required.)
- B) Supplementary charge required before use. Optional charging way as below:
 1. Charged for above 3 days at limited current 0.25CA and constant voltage 2.25V/cell.
 2. Charged for above 20 hours at limited current 0.25CA and constant voltage 2.45V/cell.
 3. Charged for 8 ~ 10 hours at limited current 0.05 CA.
- C) Supplementary charge may often fail to recover the capacity.
The battery should never be left standing till this is reached.