



## Standard series led strips

### DOMOX-2835-XX-4(WD)X

High efficiency led strip with 160 SMD2835 leds per meter



### Features

High brightness SMD 2835 LEDs according to "LM80".

Allows cutting by groups to facilitate its use.

Uniform shine along its entire length.

Powered at 24VDC, safe and suitable for universal use.

"SDCM5" Selección de MacAdam "step5".

"3M 300LSE" High performance adhesive.

Standard color reproduction "CRI > 83".

Optional color reproduction "CRI > 90".

International certifications available.

\* COMPLIANT WITH LM80:

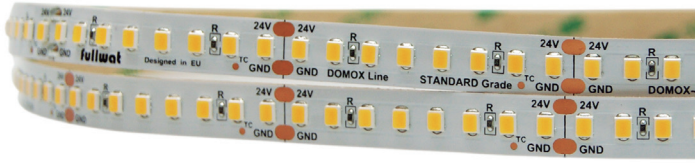
The life of the LED diodes has been tested according to the LM80 standard to achieve a expectation of 30,000 hours or more.



DOMOX-2835-XX-4(WD)X

Standard series

High efficiency led strip with 160 leds



|                               |                               |                 |   |
|-------------------------------|-------------------------------|-----------------|---|
| <b>160</b><br>Led/m           | <b>15</b><br>W/m              | <b>24V</b>      | Warranty up to<br><b>5</b><br>Years       |
| ≤ <b>2411</b><br>lm/m         | ≤ <b>160</b><br>lm/w          | LED SMD<br>2835 | MacAdam<br>5 level<br>SDCM<br><b>BIN1</b> |
| standard<br><b>CRI</b><br>>83 | optional<br><b>CRI</b><br>>90 |                 |   |

White color temperature range



|   |             |                     |          |                      |                    |                    |          |
|---|-------------|---------------------|----------|----------------------|--------------------|--------------------|----------|
| 10 Max. meters in series (one side powered) | 3M 300 LSE  | driver NOT included | 120°     | 5m                   | 6,25mm             | 5cm                | 30.000 h |
| 20 Max. meters in series (two side powered) | Do not bend | ESD                 | Dimmable | Alu profile required | Working 50°C -20°C | Storage 60°C -40°C |          |

Features

| Part number          | CCT / wavelength | Luminous intensity per m / flux | Efficiency lm / W | Energy efficiency | Ordinary strip | Strip with waterproof part number "WD" suffix |
|----------------------|------------------|---------------------------------|-------------------|-------------------|----------------|---|
| DOMOX-2835-21-4(WD)X | ±2050–2150k      | ±1850lm                         | ±123              | <b>E</b>          | <br>           | <br><br>No color temperature deviation.       |
| DOMOX-2835-23-4(WD)X | ±2250–2350k      | ±1900lm                         | ±126              | <b>D</b>          |                |   |
| DOMOX-2835-BH-4(WD)X | ±2650–2800k      | ±2209lm                         | ±147              | <b>C</b>          |                |   |
| DOMOX-2835-BC-4(WD)X | ±2950–3250k      | ±2274lm                         | ±151              | <b>C</b>          |                |   |
| DOMOX-2835-BN-4(WD)X | ±3800–4200k      | ±2411lm                         | ±160              | <b>C</b>          |                |   |
| DOMOX-2835-BF-4(WD)X | ±6400–6700k      | ±2313lm                         | ±154              | <b>C</b>          |                |   |

Notes



25 length models are available.

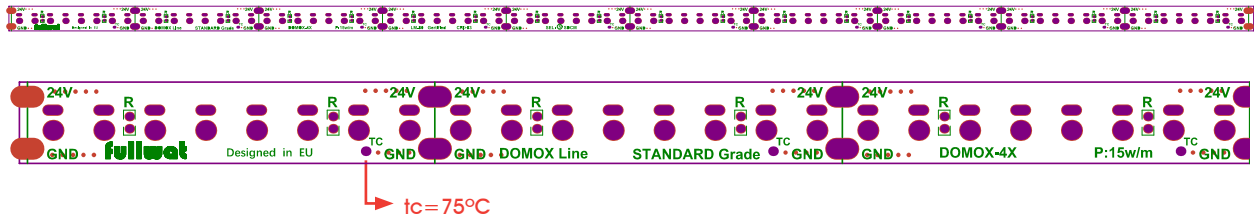


50 length models are available under request. Contact to our Sales Department.

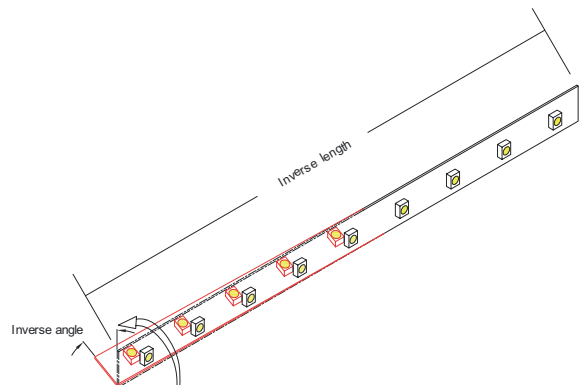
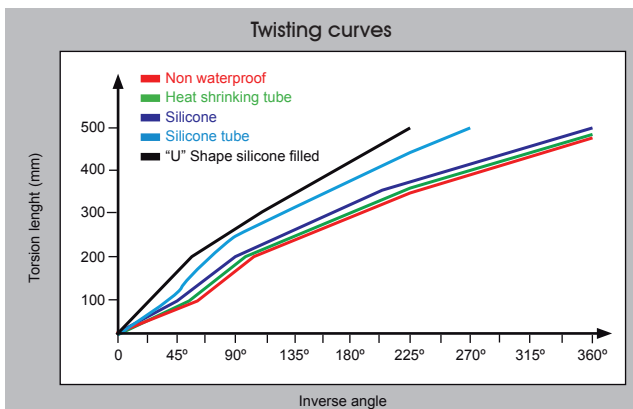
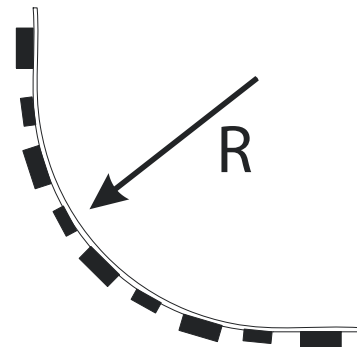
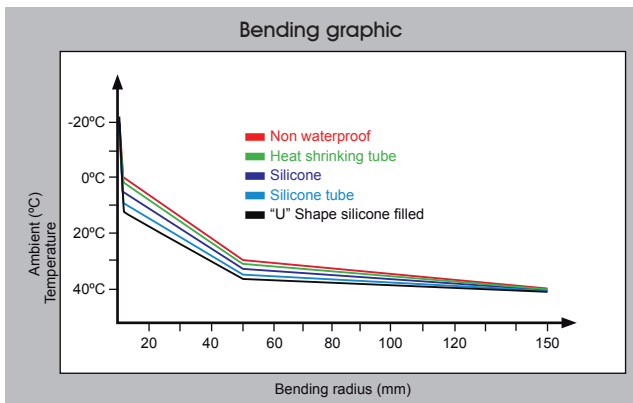
Specefic parameters

| Reference          | Waterproof materials   | Size (mm) | Angle | Connections        | Fixing mode         | IP rate |
|--------------------|------------------------|-----------|-------|--------------------|---------------------|---------|
| DOMOX-2835-XX-4X   | Non waterproof         | 10x1,25mm | 120°  | Wire red and black | Adhesive 3M 300 LSE | IP20    |
| DOMOX-2835-XX-4WDX | Silicone extruded tube | 11,5x5mm  | 120°  | Wire red and black | Adhesive 3M 300 LSE | IP65    |

PCB Layout



Bending grades



Reference point: strip bending at 0°C.

**NON-WATERPROOF MODEL**

Features

- IP20 easier assembling 3M 300LSE.
- Small in size, light in weight, flexible.

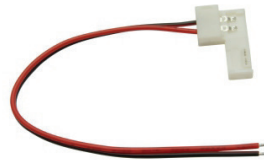


Optional accesories

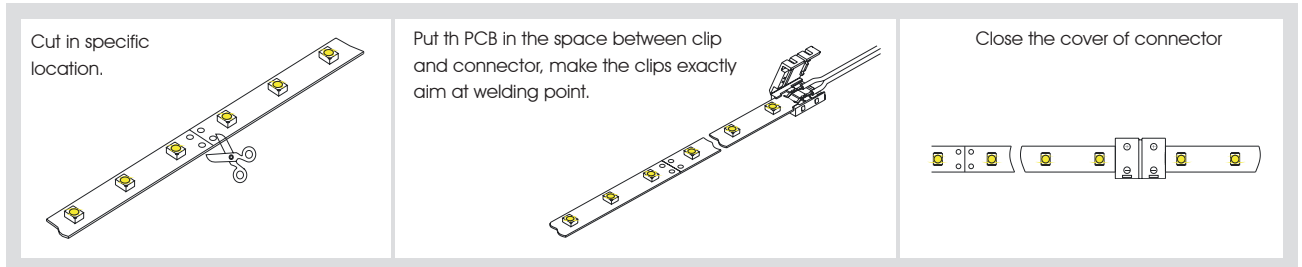
ACC10-JOIN-600



ACC10-CABLE-600



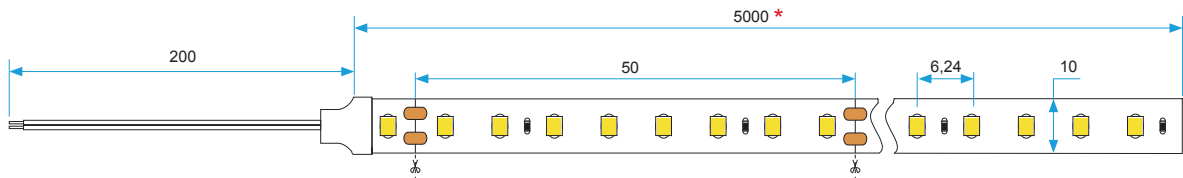
Operatin specification



Product size

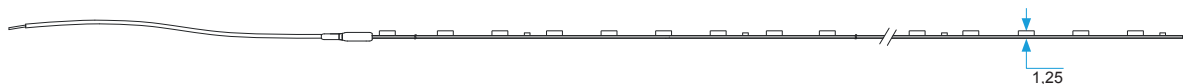
Front view

Units: mm



Side view

Units: mm



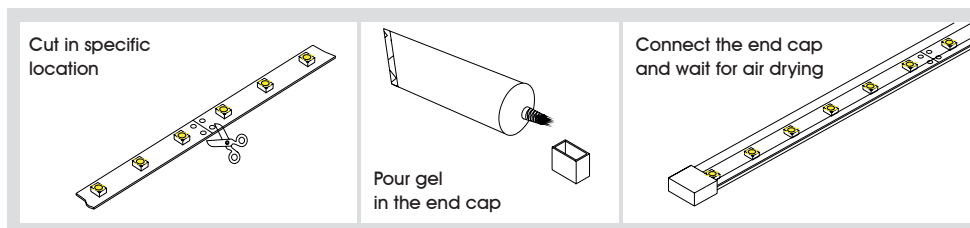
\* 25 Length models are available for references DOMOX-2835-XX-4X/25.  
50 Length models are available for references DOMOX-2835-XX-4X/50.

## ■ WATERPROOF MODEL

### Features

- IP65 tightness with silicone coating.
- Resistance to high temperatures, high flexibility, anti UV, high optical transmittance ( $\geq 92\%$ ), non-toxic.
- **New sealing system** with extruded silicone that prevents changes to the original CCT value (color temperature). Easier handling of connections and welds between different sections.

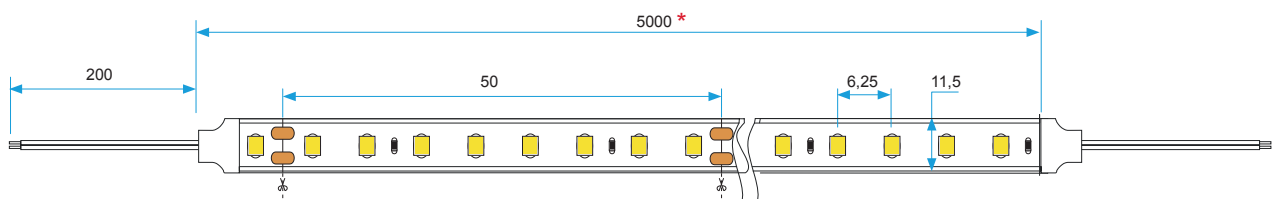
### Handing



### Product size

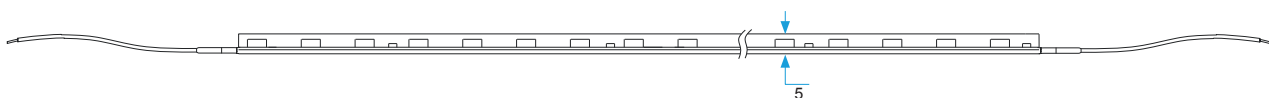
#### Front view

Units: mm



#### Side view

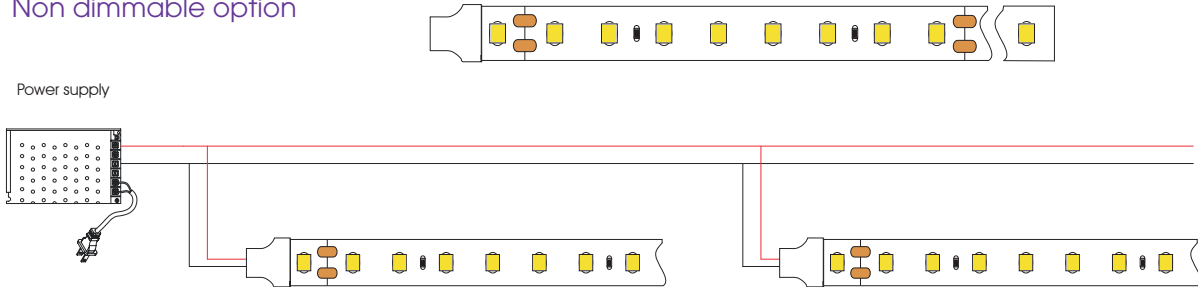
Units: mm



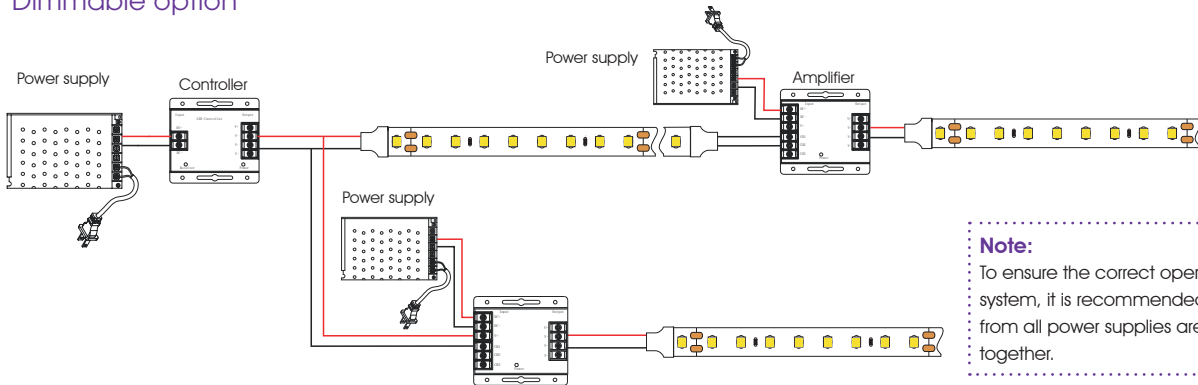
\* 25 Length models are available for references DOMOX-2835-XX-4WDX/25.  
50 Length models are available for references DOMOX-2835-XX-4WDX/50.

**CONNECTION DIAGRAMS**

Non dimmable option



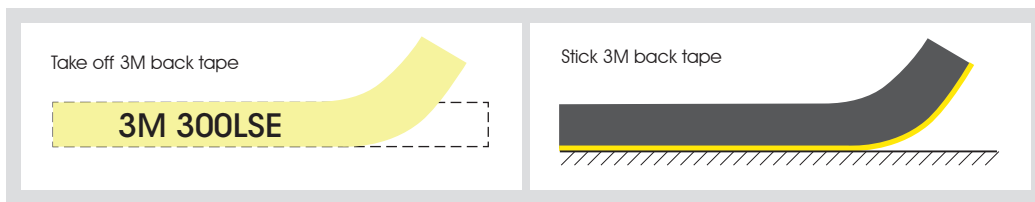
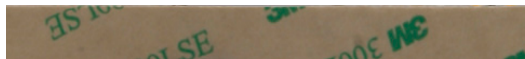
Dimmable option



**Note:**  
To ensure the correct operation of the control system, it is recommended that negatives from all power supplies are connected together.

**INSTALLATION**

Adhesive 3M 300LSE



**PACKAGING**

