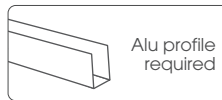


Standard series led strip

DOMOX-2835-XX-002(WP)X

Dimmable strip with 120 SMD2835 leds per meter



Features

- High brightness SMD 2835 LEDs according to "LM80".
- Allows cutting by groups to facilitate its use.
- Uniform shine along its entire length.
- Powered at 24VDC, safe and suitable for universal use.
- "SDCM5" Selection of MacAdam "step5".
- "3M 300LSE" High performance adhesive.
- Standard color reproduction "CRI>83".
- Optional color reproduction "CRI>90".
- International certifications available.

* COMPLIANT WITH LM80:

The life of the LED diodes has been tested according to the LM80 standard to reach an expectation of 30,000 hours or more.



DOMOX-2835-XX-002(WP)X

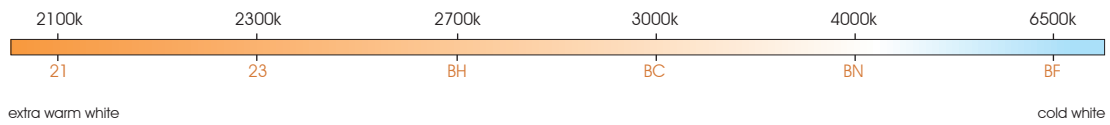
Standard series



Standard Grade High Efficiency LED Strip

120 Led/m	6 W/m	24V	5 Years Warranty up to
≤960 lm/m	≤160 lm/w	LED SMD 2835	MacAdam 5 level SDCM BIN1
standard CRI >83	optional CRI >90		

White color temperature range



10 Max. meters in series (one side powered)	3M 300 LSE	driver NOT included	120°	5m	8,33mm	5cm	30.000 h
20 Max. meters in series (two side powered)	Do not bend	ESD	Dimmable	Alu profile required	Working 50°C -20°C	Storage 60°C -40°C	

Features

Part number	CCT / wavelength		Luminous intensity per m / flux	Efficiency lm / W	Energy efficiency	Strip with waterproof part number "WP" suffix	
	IP20	IP54				Ordinary strip	Strip with waterproof part number "WP" suffix
DOMOX-2835-21-002(WP)X	±2050~2150k	±2600k	±800lm	±133	D	5000mm 1,25mm 8mm	5000mm 3mm 8mm
DOMOX-2835-23-002(WP)X	±2250~2350k	±2900k	±800lm	±133	D		
DOMOX-2835-BH-002(WP)X	±2650~2800k	±3100k	±860lm	±143	D		
DOMOX-2835-BC-002(WP)X	±2950~3250k	±3500k	±860lm	±143	D		
DOMOX-2835-BN-002(WP)X	±3800~4200k	±6000k	±960lm	±160	C		
DOMOX-2835-BF-002(WP)X	±6400~6700k	±22000k	±960lm	±160	C		

Notes

25m

25 length models are available.

50m

50 length models are available under request. Contact to our Sales Department.

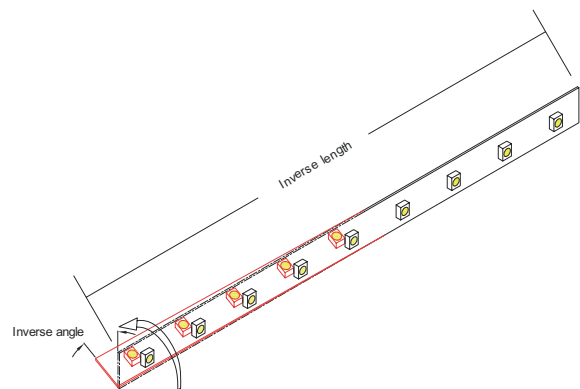
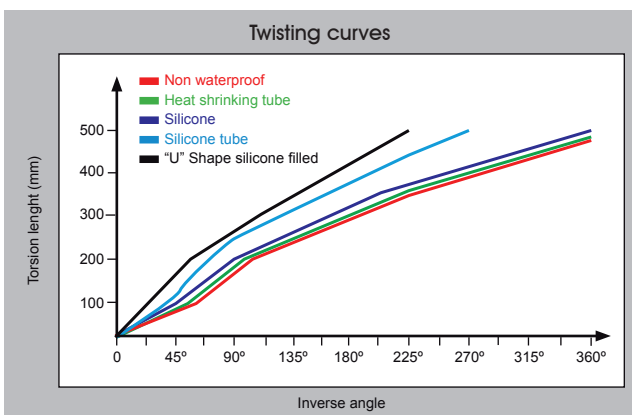
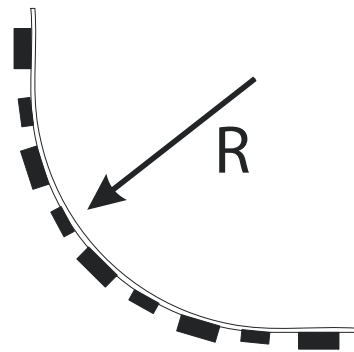
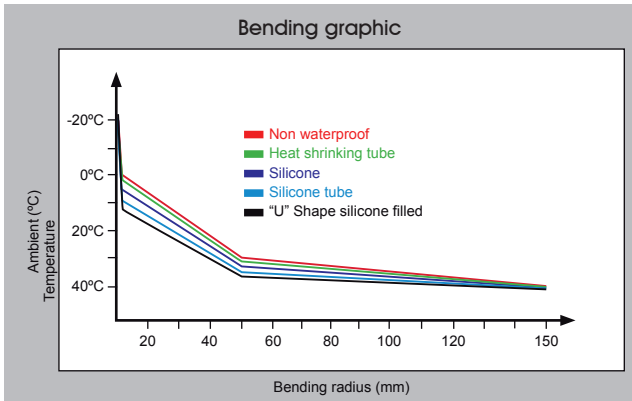
IP54

IP54 models 10m maximum

Specific parameters

Reference	Waterproof materials	Size (mm)	Connections	Fixing mode	IP rate
DOMOX-2835-BF-002X	Non waterproof	8x1.25mm	Wire red and black	Adhesive 3M 300 LSE	IP20
DOMOX-2835-BF-002WPX	Moulded silicone	8x3.0mm	Wire red and black	Adhesive 3M 300 LSE	IP54

Bending grades



Reference point: strip bending at 0°C.

NON-WATERPROOF MODEL

Features

- IP20 easier assembling 3M 300LSE.
- Small in size, light in weight, flexible.



Optional accesories



ACC8-JOIN-600



ACC8-CABLE-600

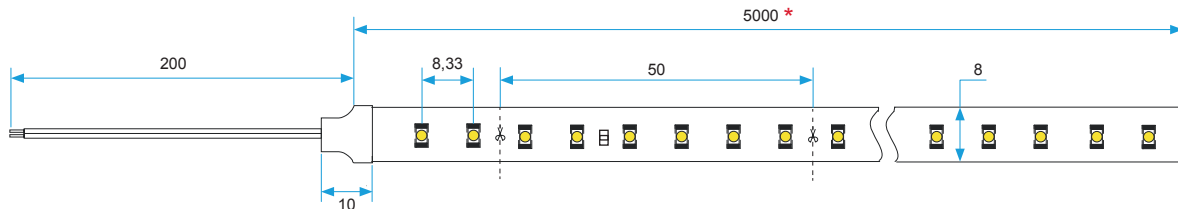
Operatin specification

<p>Cut in specific location.</p>	<p>Put th PCB in the space between clip and connector, make the clips exactly aim at welding point.</p>	<p>Close the cover of connector</p>
----------------------------------	---	-------------------------------------

Product size

Front view

Units: mm



Side view

Units: mm



* 25 Length models are available for references DOMOX-2835-XX-002X/25.
50 Length models are available for references DOMOX-2835-XX-002X/50.

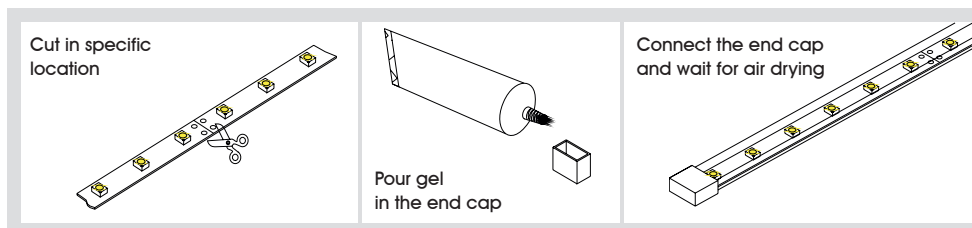
WATERPROOF MODEL

Features

- IP54 tightness with silicone coating.
- Resistance to high temperatures, high flexibility, anti UV, high optical transmittance ($\geq 92\%$), non-toxic.



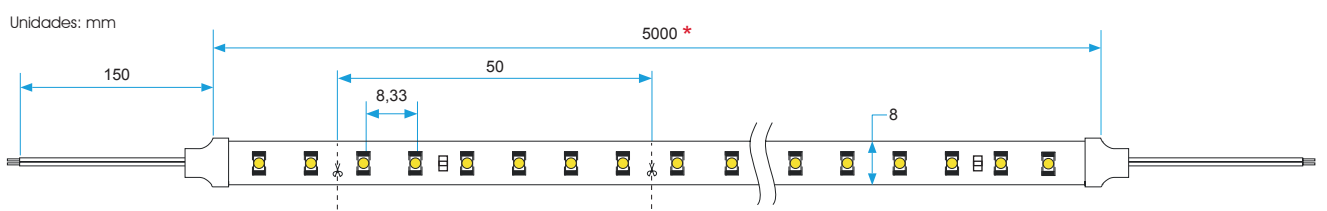
Handing



Product size

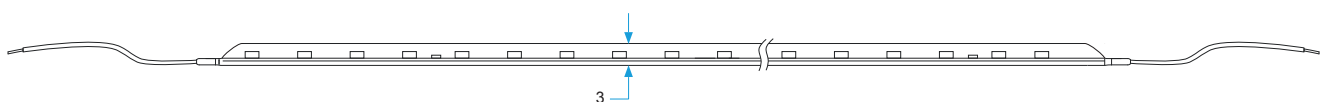
Front view

Units: mm



Side view

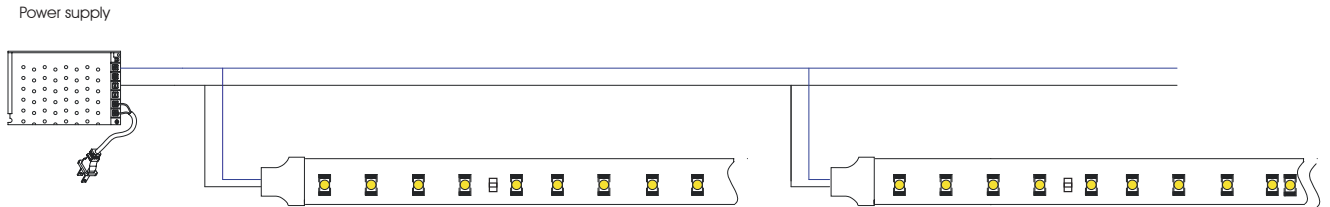
Units: mm



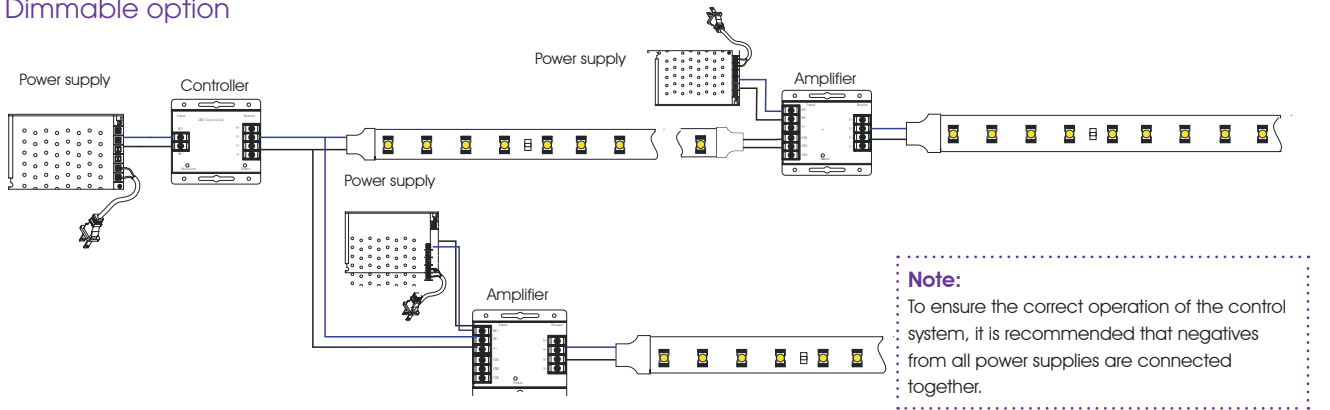
* 10 Length models are available for references DOMOX-2835-XX-002WPX/10.

CONNECTION DIAGRAMS

Non dimmable option

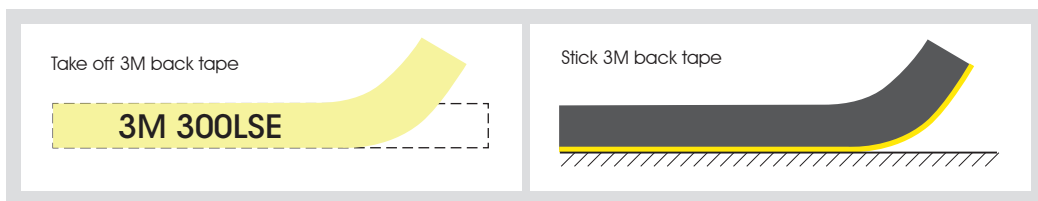
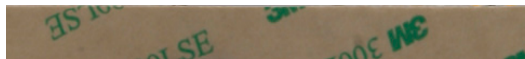


Dimmable option



Note:
To ensure the correct operation of the control system, it is recommended that negatives from all power supplies are connected together.

Adhesive 3M LSE



PACKAGING

