

Standard series led strip

DOMOX-2835-XX-HGP(WP)X

Dimmable strip with 60 SMD2835 leds per meter



Features

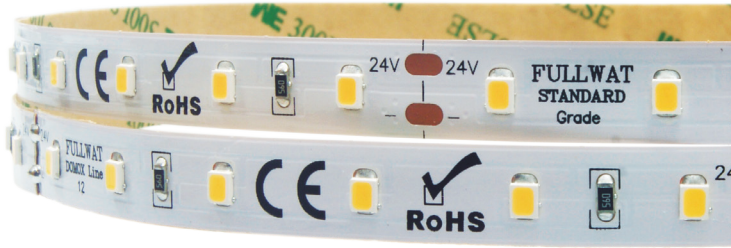
- High brightness SMD 2835 LEDs according to "LM80".
- Allows cutting by groups to facilitate its use.
- Uniform shine along its entire length.
- Powered at 24VDC, safe and suitable for universal use.
- "SDCM5" Selection of MacAdam "step5".
- "3M 300LSE" High performance adhesive.
- Standard color reproduction "CRI>83".
- Optional color reproduction "CRI>90".
- International certifications available.

* COMPLIANT WITH LM80:

The life of the LED diodes has been tested according to the LM80 standard to reach an expectation of 30,000 hours or more.

DOMOX-2835-XX-HGP(WP)X

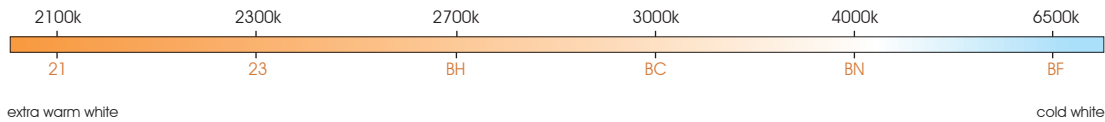
Standard series



Standard Grade High Efficiency LED Strip

60 Lcd/m	12 W/m	24V	5 Years Warranty up to
≤1380 lm/m	≤115 lm/w	LED SMD 2835	MacAdam 5 level SDCM BIN1
standard CRI >83	optional CRI >90		

White color temperature range



10 Max. meters in series (one side powered)	3M 300 LSE	driver NOT included	120°	5m	16,66mm	10cm	30.000 h
20 Max. meters in series (two side powered)	Do not bend	ESD	Dimmable	HIGH POWER Alu profile required	Working 50°C -20°C	Storage 60°C -40°C	

Features

Part number	CCT / wavelength		Luminous intensity per m / flux	Efficiency lm / W	Energy efficiency	Ordinary strip	Strip with waterproof part number "WP" suffix
	IP20	IP54					
DOMOX-2835-21-HGP(WP)X	±2050~2150k	±2600k	±1080lm	±90	F	5000mm 1,25mm 10mm 5000mm 3mm 10mm	
DOMOX-2835-23-HGP(WP)X	±2250~2350k	±2900k	±1140lm	±95	F		
DOMOX-2835-BH-HGP(WP)X	±2650~2800k	±3100k	±1260lm	±105	E		
DOMOX-2835-BC-HGP(WP)X	±2950~3250k	±3500k	±1260lm	±105	E		
DOMOX-2835-BN-HGP(WP)X	±3800~4200k	±6000k	±1320lm	±110	E		
DOMOX-2835-BF-HGP(WP)X	±6400~6700k	±22000k	±1380lm	±115	E		

Notes

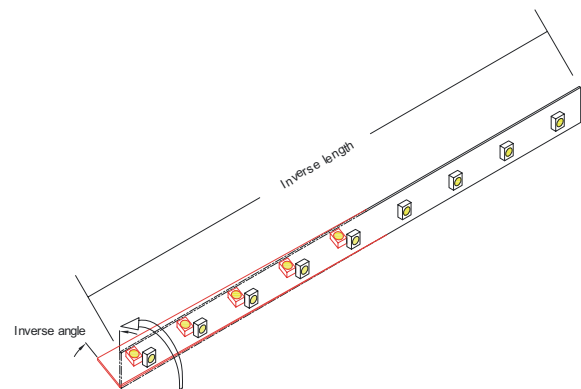
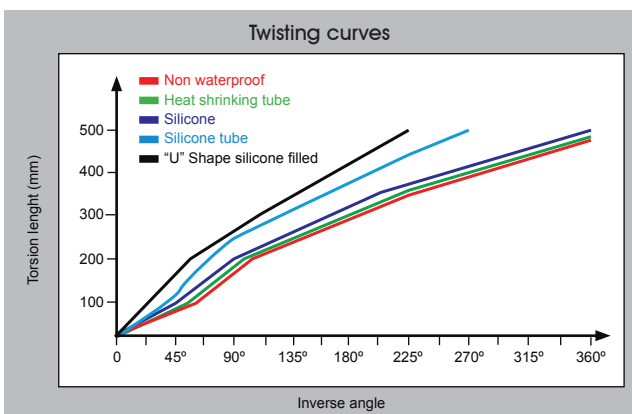
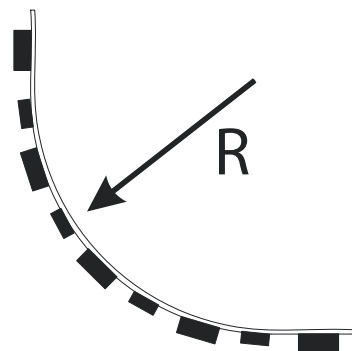
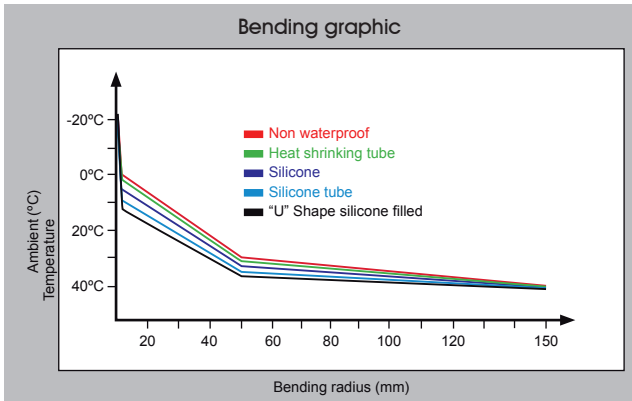
All LED strips with a solid waterproof coating suffer an increase in the original CCT value, due to the optical modification introduced by the silicone when the light beam passes through it. The initial color temperature values are increased by several thousand or hundreds of K. This increase is more pronounced in the high values that correspond to the coldest white temperatures. Please contact our commercial department if you wish to have more information on this matter.

	IP54 models 10m maximum
	25 length models are available.
	50 length models are available under request. Contact to our Sales Department.

Specific parameters

Reference	Waterproof materials	Size (mm)	Connections	Fixing mode	IP rate
DOMOX-2835-BF-HGPX	Non waterproof	10x1.25mm	Wire red and black	Adhesive 3M 300 LSE	IP20
DOMOX-2835-BF-HGPWPX	D moulded silicone	10x3mm	Wire red and black	Adhesive 3M 300 LSE	IP54

Bending grades



Reference point: strip bending at 0°C.

NON-WATERPROOF MODEL

Features

- IP20 easier assembling 3M 300LSE.
- Small in size, light in weight, flexible.



Optional accesories

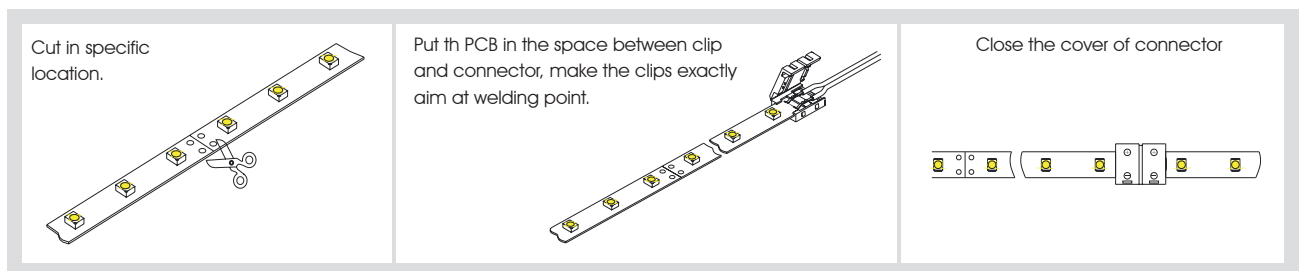


ACC10-JOIN-600



ACC10-CABLE-300

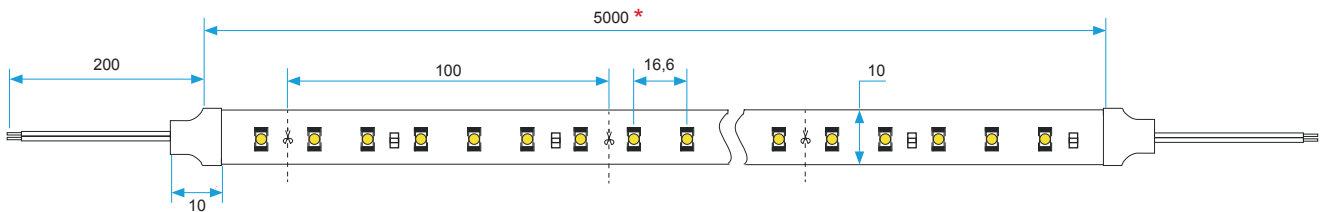
Operatin specification



Product size

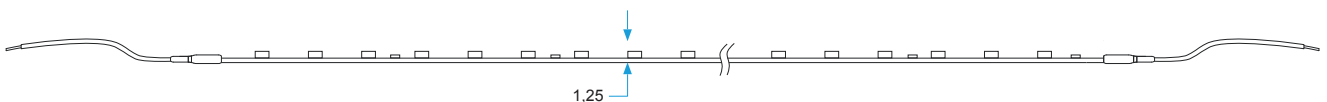
Front view

Units: mm



Side view

Units: mm



* 25 Length models are available for references DOMOX-2835-XX-HGPX/25.
50 Length models are available for references DOMOX-2835-XX-HGPWPX/50.

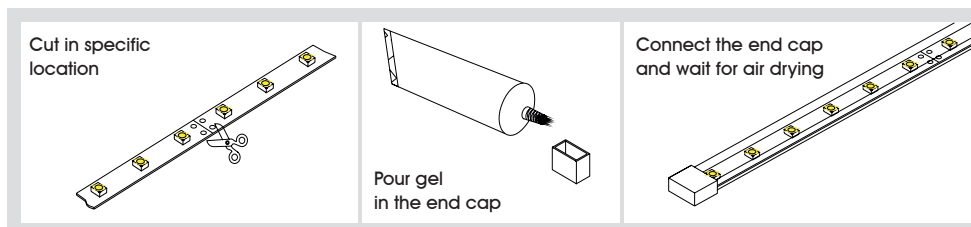
WATERPROOF MODEL

Features

- IP54 tightness with silicone coating.
- Resistance to high temperatures, high flexibility, anti UV, high optical transmittance ($\geq 92\%$), non-toxic.



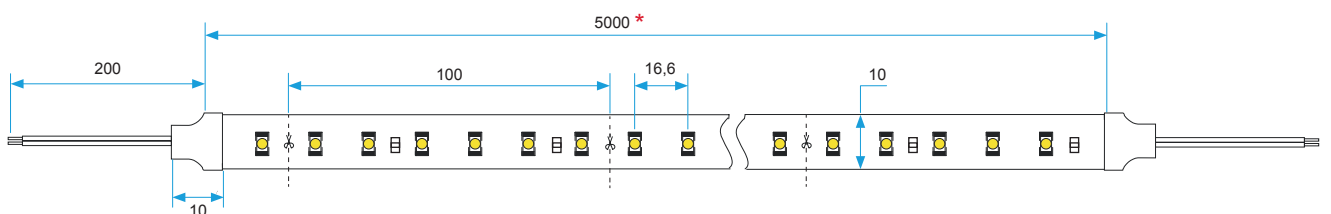
Handing



Product size

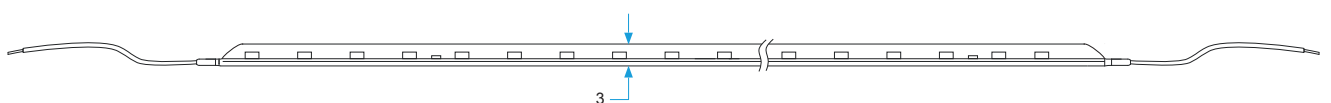
Front view

Units: mm



Side view

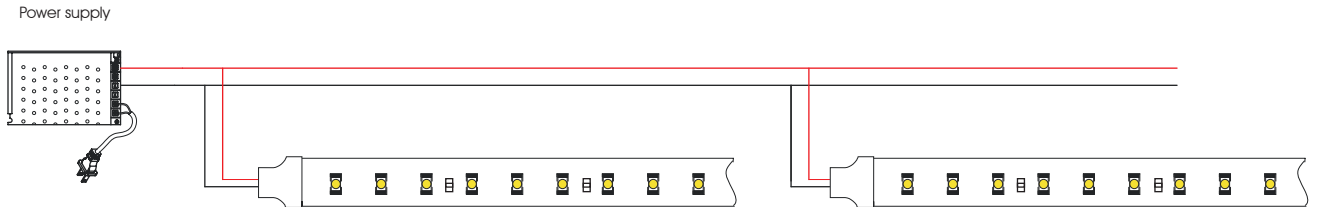
Units: mm



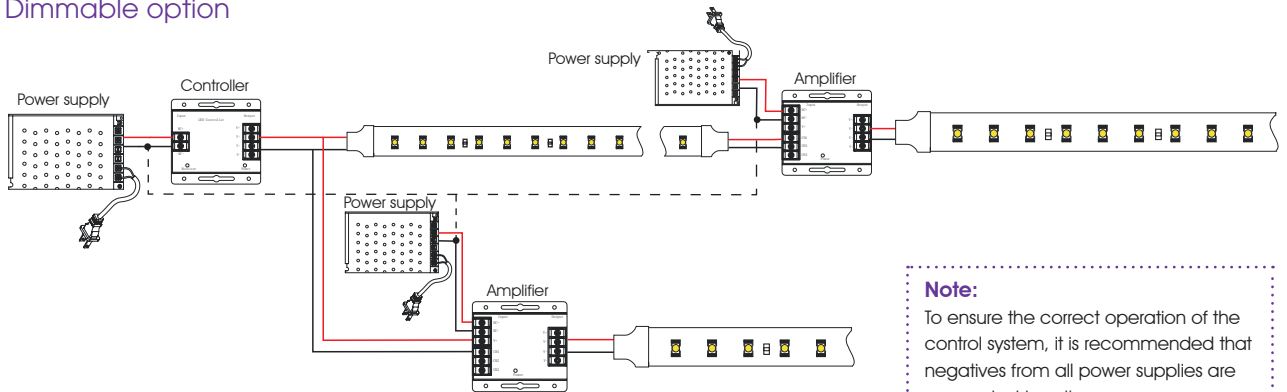
* 25 Length models are available for references DOMOX-2835-XX-HGPWPX/25.
50 Length models are available for references DOMOX-2835-XX-HGPWPX/50.

CONNECTION DIAGRAMS

Non dimmable option

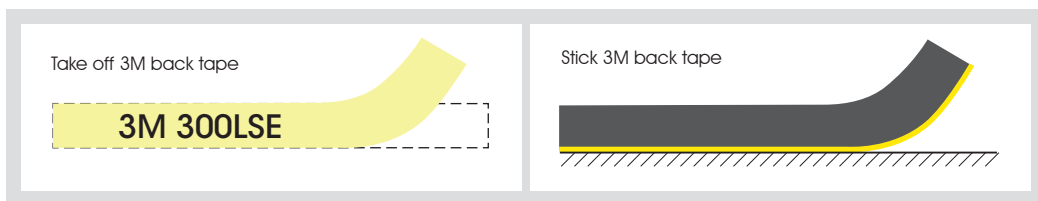


Dimmable option



Note:
To ensure the correct operation of the control system, it is recommended that negatives from all power supplies are connected together.

Adhesive 3M LSE



PACKAGING

