

## Led Strips Standard Series

DOMOX-5060-RGB-S(WP)

Dimmable LED strip SMD5060 30 LED/m



### Features

- Used 5060 SMD RGB LED with three chip in one LED as lighting resources.
- Input Voltage DC 12V.
- Can be cut by 3 led and connect again by our accessories.
- With 3M adhesive tape, easy for installation.

### Application

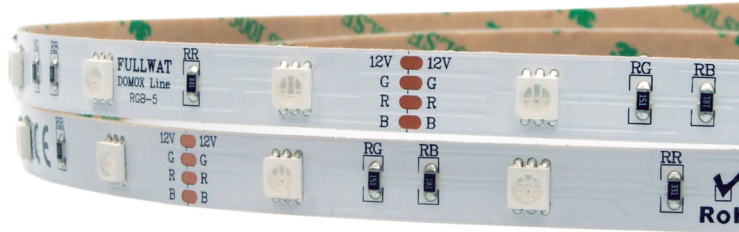
- Cover lighting.
- Architectural light for canopy, corridor, window, archway.
- Backlight for edge lighting for signage.
- DIY lights for home use.
- Path and contour marking.
- Decorative lights for event, show exhibition.

\* LM80 CERTIFIED:  
LED LIFESPAN tested under LM80;  
Expected LIFETIME of 30,000h.



DOMOX-5060-RGB-S(WP)

Standard series



Dimmable LED strip SMD5060 30 LED/m

30 Led/m    4,8 W/m    12V    Warranty up to 5 Years

≤190 lm/m    LED SMD 5050

**RGB**





RGB full color



10 Max. meters in series (one side powered)    3M 300 LSE    driver NOT included    120°    5m    33,3mm    10cm    30.000 h

20 Max. meters in series (two side powered)    Do not bend    ESD    Dimmable    Alu profile required    Working 50°C -20°C    Storage 60°C -40°C

Features

Part number	CCT / wavelength	Luminous intensity per m / flux	Efficiency lm / W	Energy efficiency	Ordinary strip	Waterproof strip part number "WP" suffix
 DOMOX-5060-RGB-S(WP)	(R) ±625nm (G) ±520nm (B) ±465nm	±190lm	±40		 5000mm 1,25mm 10mm	 5000mm 3mm 10mm

Notes

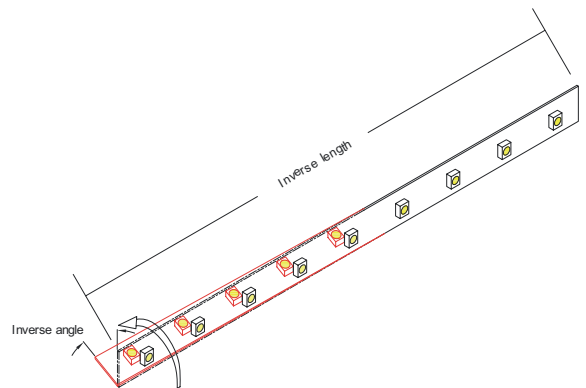
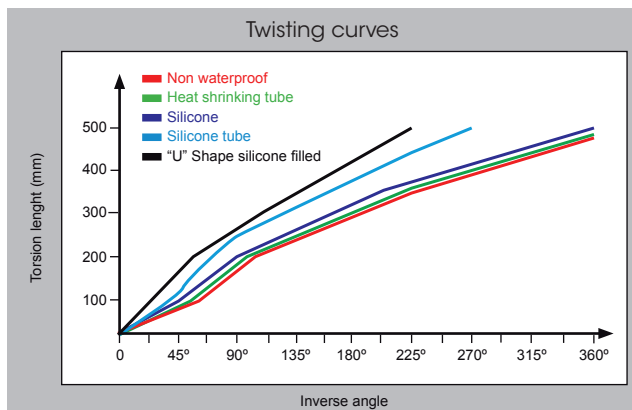
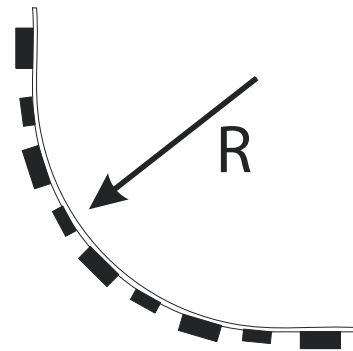
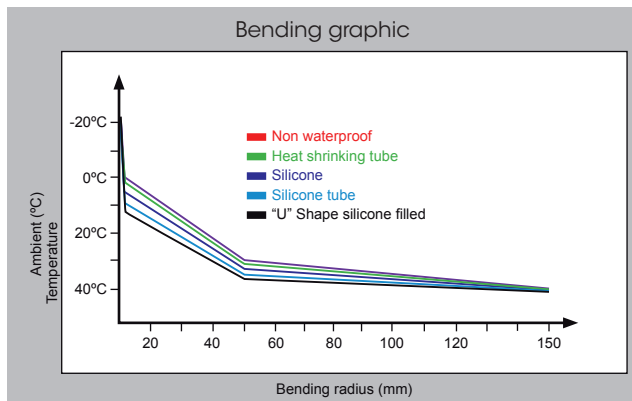
**25m**  
25 length models are available.

**50m**  
50 length models are available under request. Contact to our Sales Department.

Specific parameters

Reference	Waterproof materials	Size (mm)	Connections	Fixing mode	IP rate
DOMOX-5060-RGB-S	NonWaterproof	10x1,25	Silicone wire red and white	Adhesive 3M 300 LSE	IP20
DOMOX-5060-RGB-SWP	D moulded silicone	10x3	Silicone wire red and white	Adhesive 3M 300 LSE	IP54

Bending grades

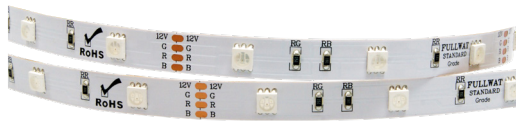


Reference point: strip bending at 0°C.

**NON WATERPROOF MODEL**

Features

- With 3M 300LSE adhesive tape, it is easy for installation. IP20.
- Small in size, light in weight, flexible.



Optional accesories

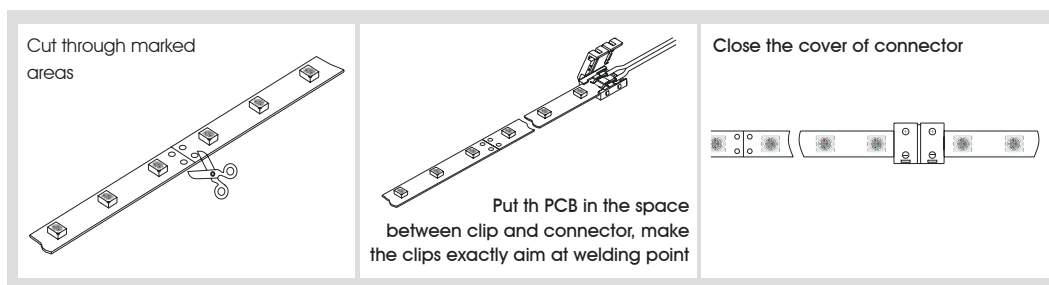


ACC10-JOIN-RGB-150



ACC10-CABLE-RGB-150

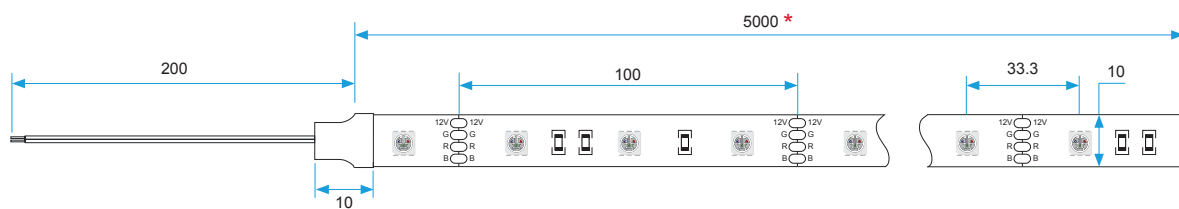
Operation specification



Product size

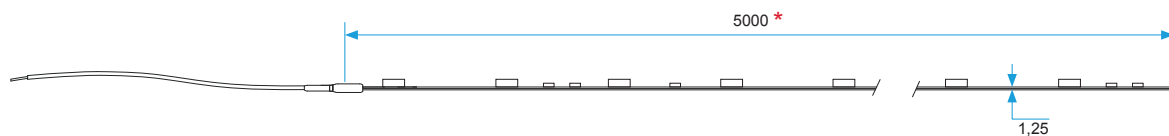
Front view

Units: mm



Size view

Units: mm



\* 25 meter models for references DOMOX-5060-RGB-S/25.  
50 meter models for references DOMOX-5060-RGB-S/50.

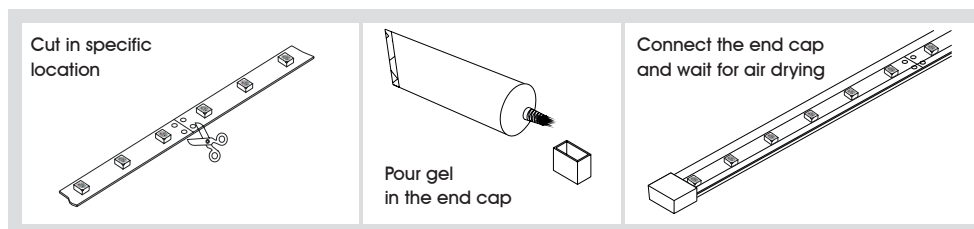
## ■ WATERPROOF MODEL

### Features

- The strip is well protected by silicone tube IP54.
- High temperature resistance high flexibility, anti UV, high light transmittance ( $\geq 92\%$ ), non-toxic.



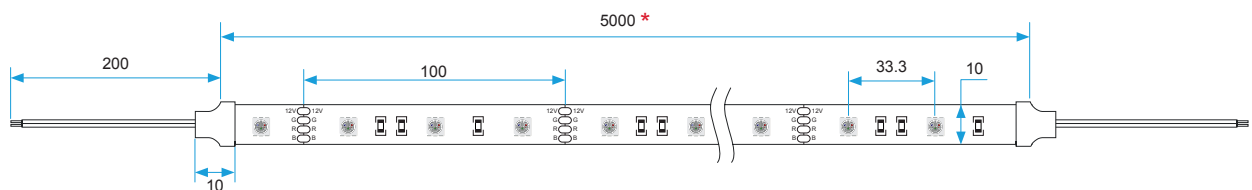
### Operation specification



### Product size

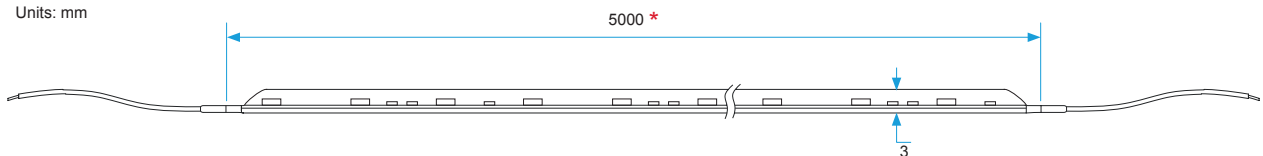
#### Front view

Units: mm



#### Size view

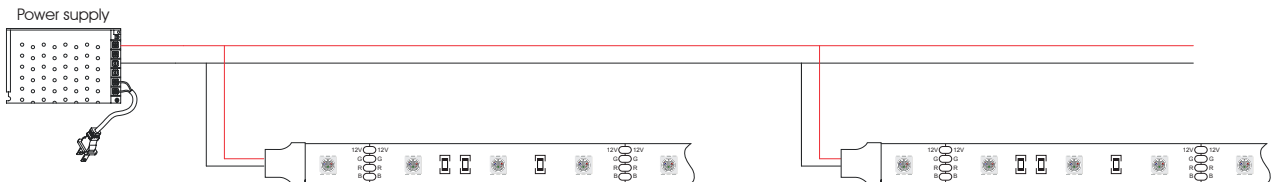
Units: mm



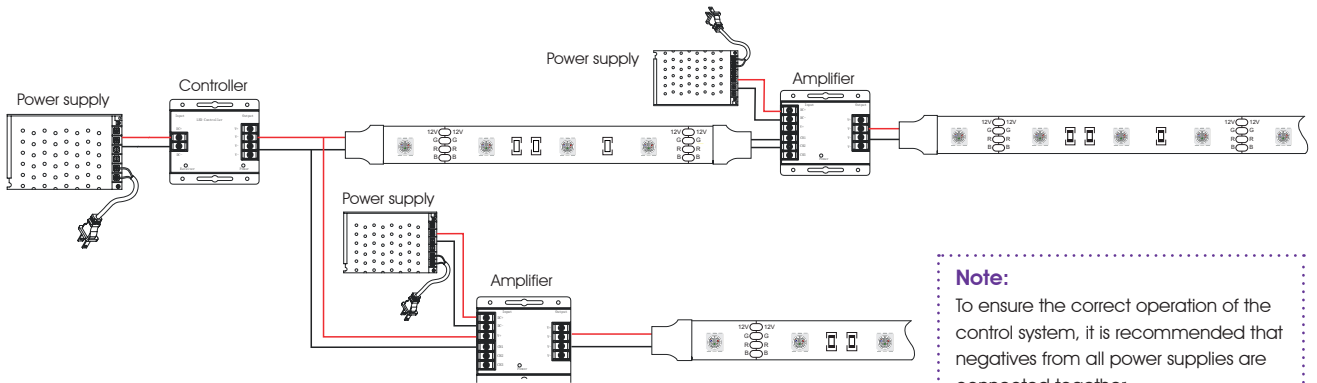
\* 25 meter models for references DOMOX-5060-RGB-SWP/25.  
50 meter models for references DOMOX-5060-RGB-SWP/50.

**CONNECTION DIAGRAMS**

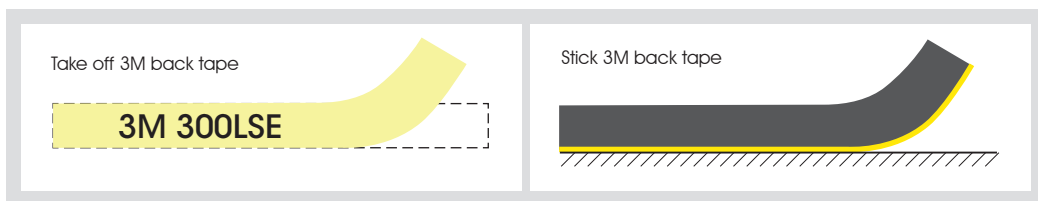
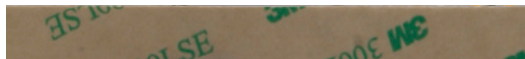
Non dimmable option



Dimmable option



Adhesive 3M 300LSE



**PACKAGING**

