

## Led Strips Standard Series

DOMOX-5060-XX-ESP(WP)X

Dimmable LED strip SMD5060 60 LED/m



### Features

- Used 5060 TOP SMD RGB or signal color with three chip in one LED as lighting resources.
- Available / Red / Green / Blue / Amber / Pure
- Input Voltage DC 24V.
- Can be cut by 6 led and connect again by our accessories.
- With 3M adhesive tape back, easy for installation.

### Application

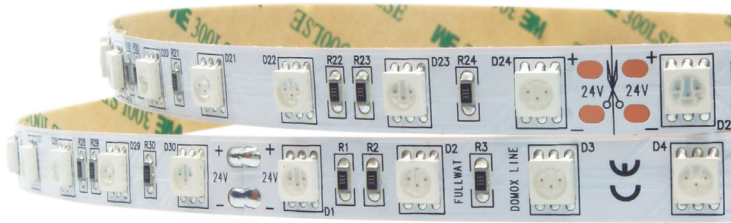
- Cover lighting.
- Architectural light for canopy, corridor, window, archway.
- Backlight for edge lighting for signage.
- DIY lights for home use.
- Path and contour marking.
- Decorative lights for holiday, event, show exhibition.

\*LM80 CERTIFIED:  
LED LIFESPAN tested under LM80;  
Expected LIFETIME of 30,000h.

DOMOX-5060-XX-ESP(WP)X

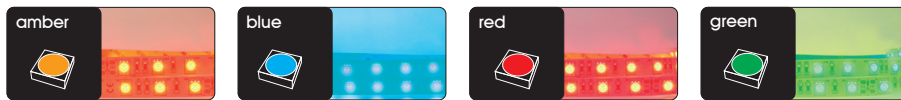
Standard series

Dimmable LED strip SMD5060 60 LED/m



60 Led/m    12 W/m    24V    Warranty up to 5 Years

≤895 lm/m    LED SMD 5050



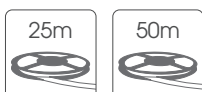
10 Max. meters in series (one side powered)    3M 300 LSE    driver NOT included    120°    5m    16,66mm    10cm    30.000 h

20 Max. meters in series (two side powered)    Do not bend    ESD    Dimmable    Alu profile required    Working 50°C -20°C    Storage 60°C -40°C

Features

| Part number            | CCT / wavelength | Luminous intensity per m / pflux | Efficiency lm / W | Ordinary strip | Strip with waterproof part number "WP" suffix |
|------------------------|------------------|----------------------------------|-------------------|----------------|---|
| DOMOX-5060-AB-ESP(WP)X | ±588~593nm       | ±360lm                           | ±30               | <br>           | <br>  |
| DOMOX-5060-AZ-ESP(WP)X | ±455~470nm       | ±255lm                           | ±21               |                |   |
| DOMOX-5060-RO-ESP(WP)X | ±615~625nm       | ±255lm                           | ±21               |                |   |
| DOMOX-5060-VE-ESP(WP)X | ±515~525nm       | ±895lm                           | ±75               |                |   |

Notes



25/50 length models are available under request. Contact to our Sales Department.

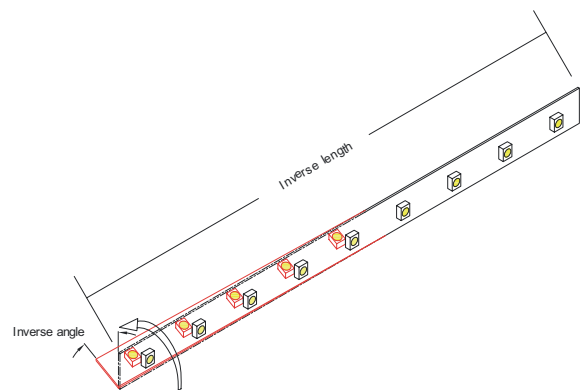
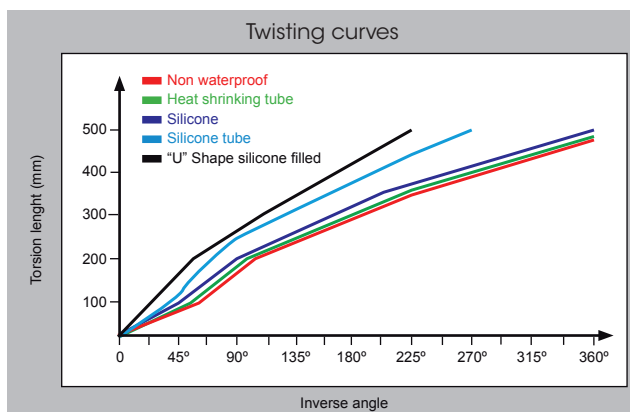
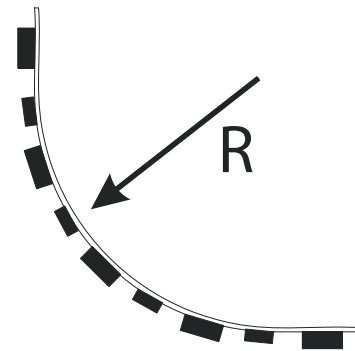
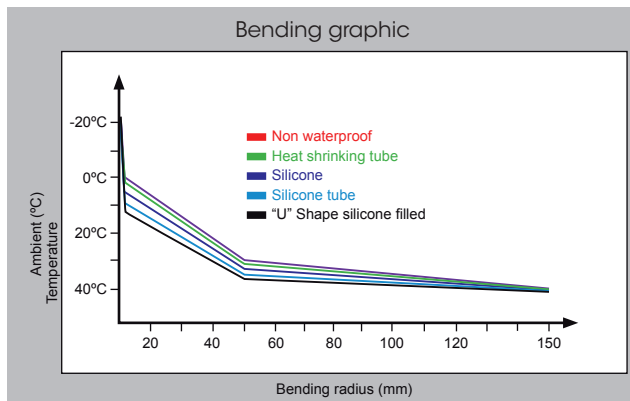


IP54 models 10m maximum.

Specific parameters

| Reference            | Waterproof materials | Size (mm) | Connections                 | Mode of fixation    | IP rate |
|----------------------|----------------------|-----------|-----------------------------|---------------------|---------|
| DOMOX-5060-RO-ESPX   | NonWaterproof        | 10x1,25   | Silicone wire red and white | Adhesive 3M 300 LSE | IP20    |
| DOMOX-5060-RO-ESPWPX | D moulded silicone   | 10x3      | Silicone wire red and white | Adhesive 3M 300 LSE | IP54    |

Bending grades



Reference point: strip bending at 0°C.

**NON WATERPROOF MODEL**

Features

- With 3M 300LSE adhesive tape, it is easy for installation. IP20.
- Small in size, light in weight, flexible.



Optional accesories

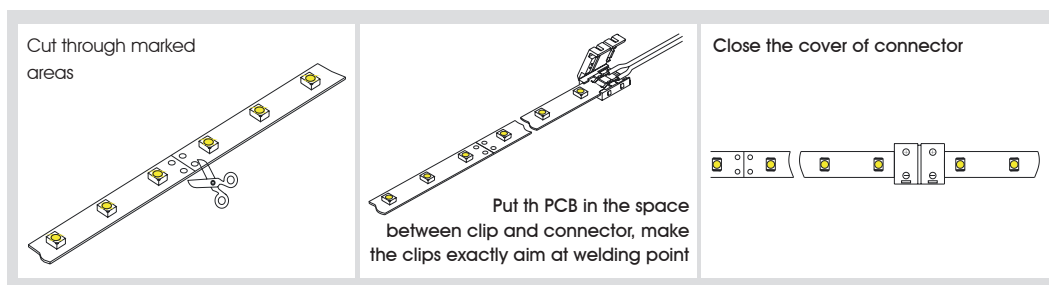


ACC10-JOIN-300



ACC10-CABLE-300

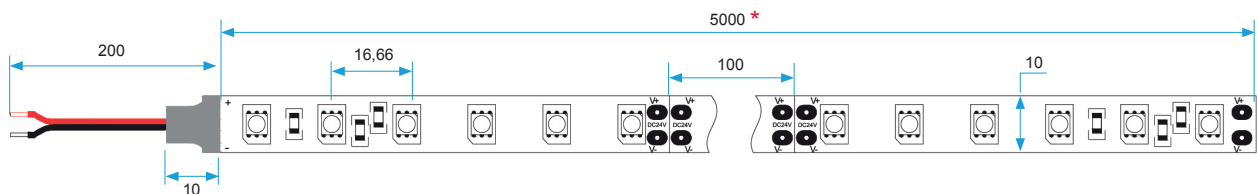
Operation specification



Product size

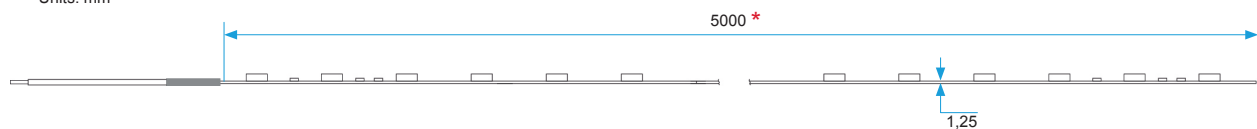
Front view

Units: mm



Size view

Units: mm



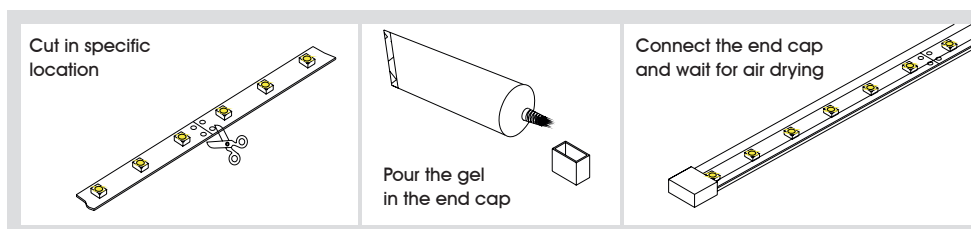
\* 25 meter models for references DOMOX-5060-XX-ESPX/25.  
50 meter models for references DOMOX-5060-XX-ESPX/50.

## ■ WATERPROOF MODEL

### Features

- The strip is well protected by silicone tube IP54.
- High temperature resistance high flexibility, anti UV, high light transmittance ( $\geq 92\%$ ), non-toxic.

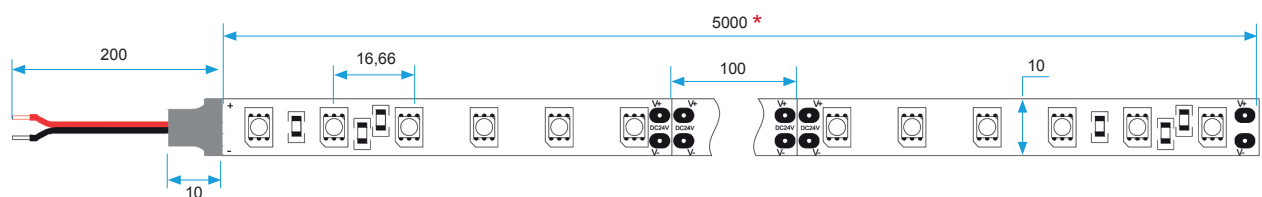
### Operation specification



### Product size

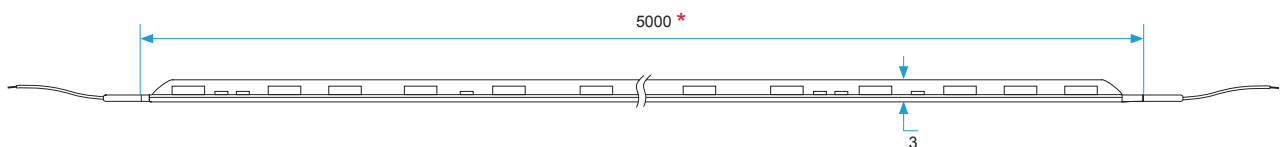
#### Front view

Units: mm



#### Size view

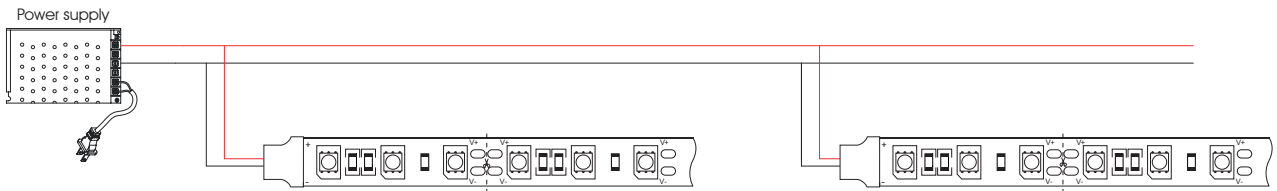
Units: mm



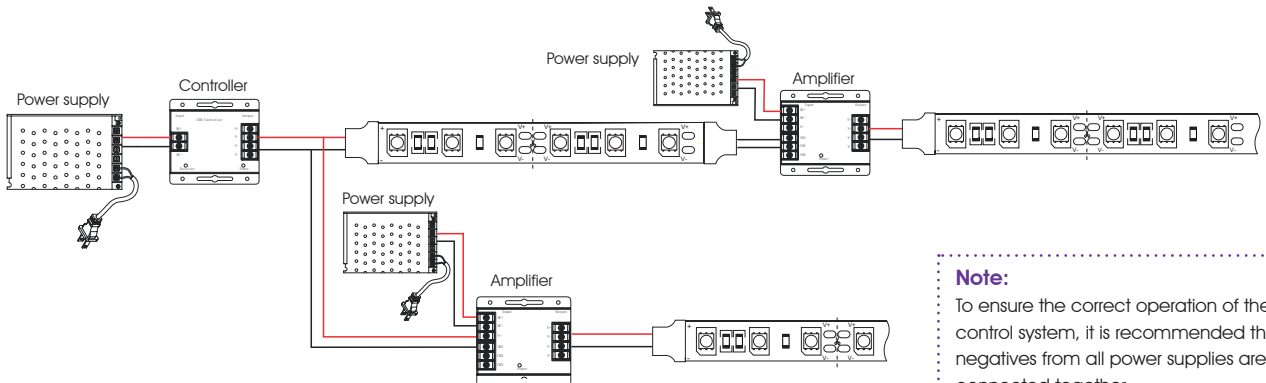
\* 25 meter models for references DOMOX-5060-XX-ESPWPX/25.  
50 meter models for references DOMOX-5060-XX-ESPWPX/50.

**CONNECTION DIAGRAMS**

Non dimmable option

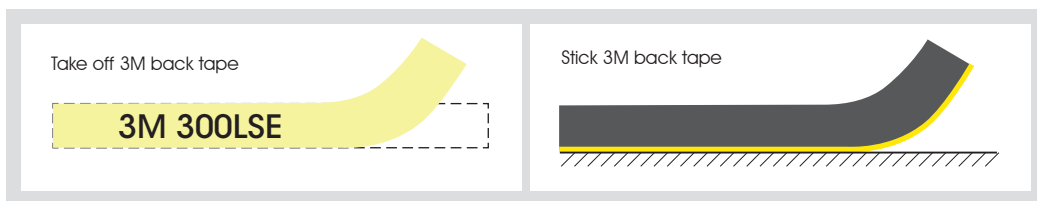
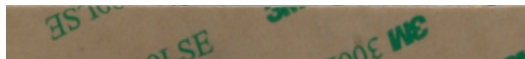


Dimmable option



**Note:**  
To ensure the correct operation of the control system, it is recommended that negatives from all power supplies are connected together.

Adhesive 3M 300LSE



**PACKAGING**

