



rotating switch remote panel - 1 ZONE control **LENNY-PAN-K1**



Smart LED control system

New smart LED **color control system** with 2.4GHz remote control.

Auto synchronisation and **auto transmission** functions.

The device adopts low power consumption technologies
and one controller can manage several receivers at the same time.

The system does not produce interference as it uses a very low level transmission signal.

Suitable for simple installations in both domestic and professional environments.

Owners manual



LENNY-PAN-K1 1 ZONE control

Smart LED control system

Technical specifications	3
Single color	5
Remote control functions	
Mobile control	
Tunable white	6
Remote control functions	
Mobile control	
Led Strip-controller connection	7
System linking and unlinking	9
Device auto-sync	10
Auto-transmitting function	10
Installation diagram	11
Mobile phone pairing	13
Alexa linking	17
Google Home linking	18
Google Assistant linking	19
Compatibility table	20
Table of controls by zones	21

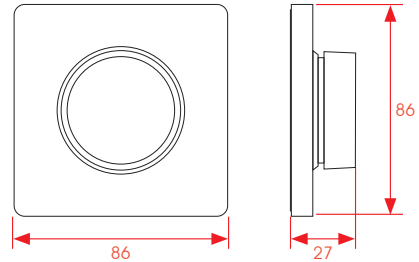
LENNY-PAN-K1 1 ZONE control

Smart LED control system

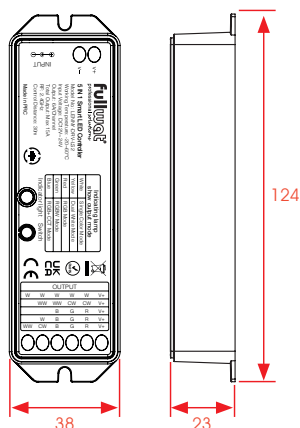
Technical specifications

Rotating switch remote panel	
Model	LENNY-PAN-K1
Voltage	3V (battery CR2032)*
Emitting power	6dBm
Standby current	<6uA
Working temperature	-10~40°C
Working frequency	2.4GHz
Aprox. operational distance	30m

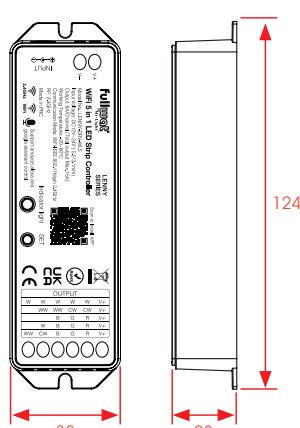
* Not included.



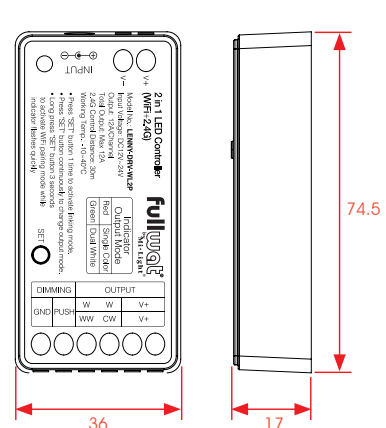
DIRECT CURRENT DRIVERS			
	LENNY-DRV-LS2	LENNY-DRV-WL5	LENNY-DRV-WL2P
Description	5 in 1 receiver	WiFi 5 in 1 receiver	WiFi 2 in 1 receiver
Voltage	DC12V~24V (terminal block & jack plug inputs)		
Output max. current	6A per channel		12A per channel
Total current	15A		12A
Working temperature	-20~60°C		-10~40°C
Working frequency	2.4GHz		
Aprox. operational distance	30m		
Connection mode	Common anode		
WIFI	Requires gateway LENNY-WIFOX1	Included	



LENNY-DRV-LS2



LENNY-DRV-WL5



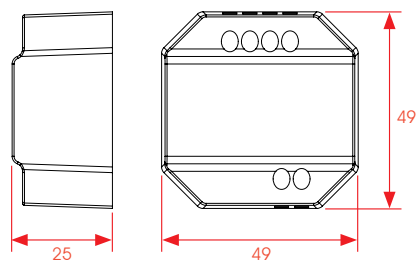
LENNY-DRV-WL2P

LENNY-PAN-K1 1 ZONE control

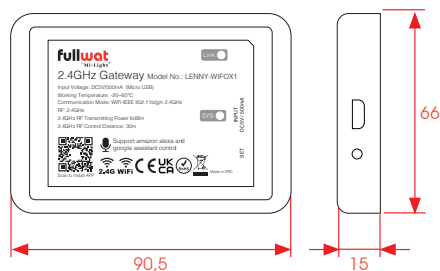
Smart LED control system

Technical specifications

ALTERNATE CURRENT DRIVER		TRIAC controller
Model	LENNY-TRIAC1	
Input voltage	AC 100-240V 50/60Hz	
Output voltage	AC 100-240V	
Output current	MAX 1.36A	
Output power	150W@100VAC; 300W@240VAC	
Regulation method	Wireless RF, push button, APP	
RF range	30m	
Working temperature	-10-40°C	
WIFI	Requires gateway LENNY-WIFOX1 and APP	



WIFI GATEWAY	
Model	LENNY-WIFOX1
Working voltage	DC5V/500mA (Micro USB)
Working temperature	-20~60°C
Communication	WiFi-IEEE 802.11b/g/n 2.4GHz
Working frequency	2.4GHz
Transmission power	6dBm



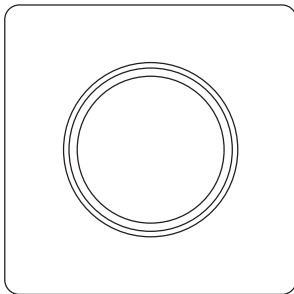
* Suggested AC/DC adaptors (not included): MWMU10GS
FU-ADPY10-5-USB

LENNY-PAN-K1 1 ZONE control

Smart LED control system

SINGLE COLOR

Rotating switch remote panel functions: LENNY-PAN-K1



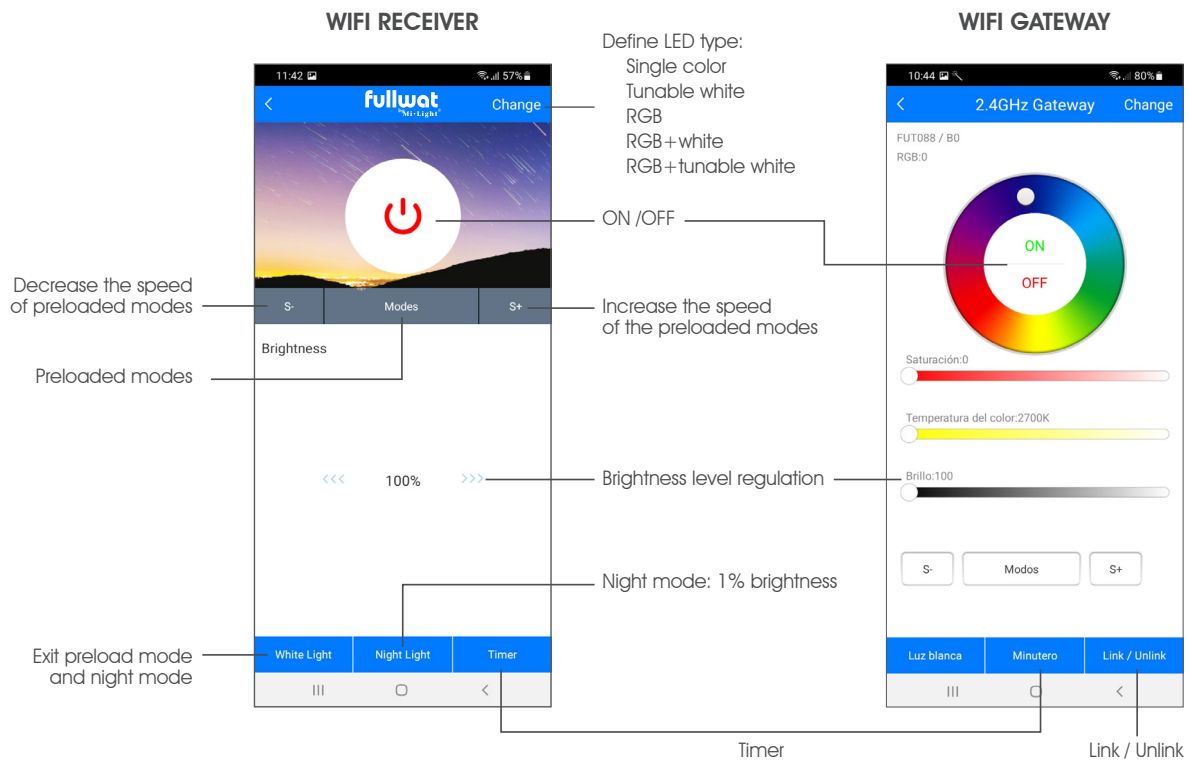
Short press: Light on/off switching.

Rotary: Brightness regulation.

Long press with light off: Night mode activation.

Mobile control

For control via mobile phone, Alexa, Google Home or Google Assistant, a WIFI gateway is required, either built into the receiver or using the LENNY-WIFOX1 gateway.

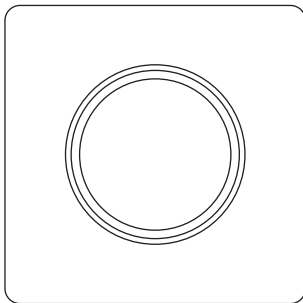


LENNY-PAN-K1 1 ZONE control

Smart LED control system

TUNABLE WHITE

Rotating switch remote panel functions: LENNY-PAN-K1



Short press: Light on/off switching.

Rotary: Brightness regulation.

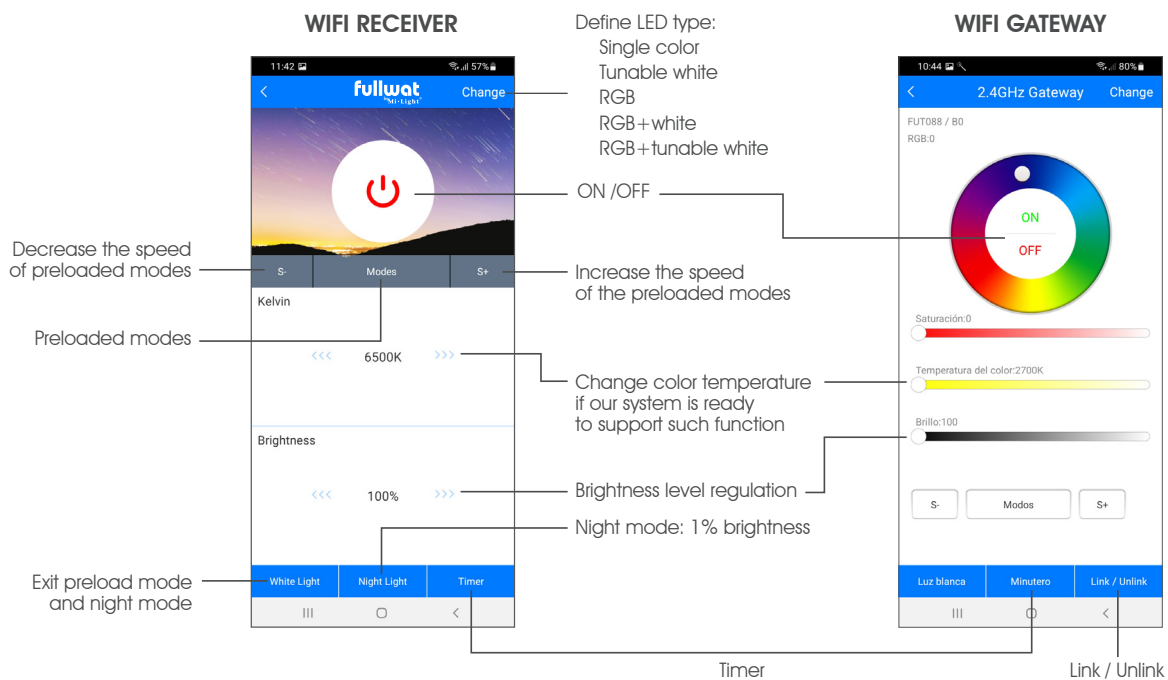
Long press with light off: Night mode activation.

Long press with the light on: Use wheel to select white shade level.

Caution: Device will exit CCT mode if owner does not use it within 3 sec.

Mobile control

For control via mobile phone, Alexa, Google Home or Google Assistant, a WIFI gateway is required, either built into the receiver or using the LENNY-WIFOX1 gateway.



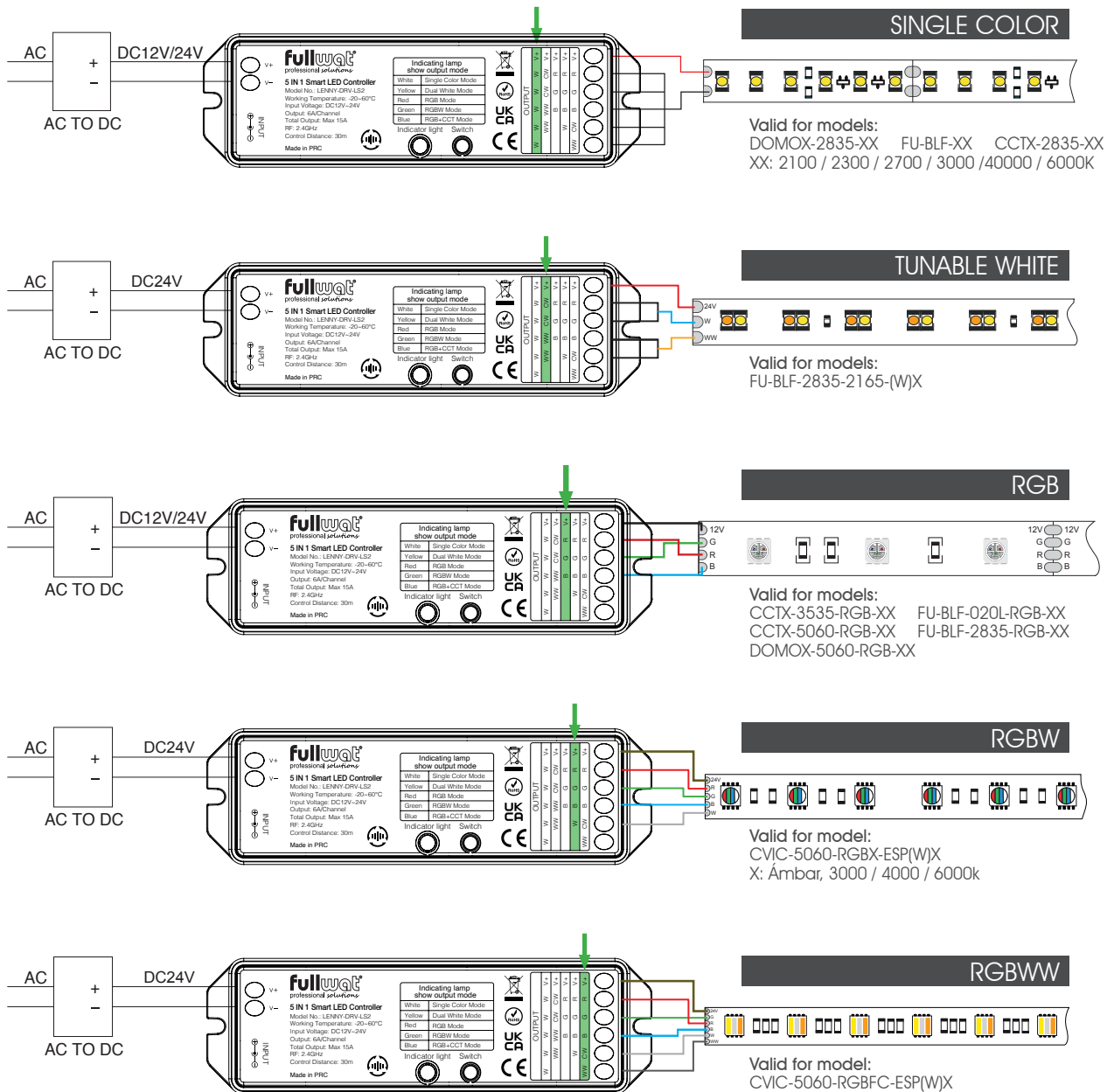
LENNY-PAN-K1 1 ZONE control

Smart LED control system

Led Strip-controller connection

Connection drawing

5 in 1 driver **LENNY-DRV-LS2 / LENNY-DRV-WL5**



"Switch" button can be used to indicate which type of product is being managed. To do so, press the "Switch" or "SET" button with a short touch until color from "indicator light" is required one.

	Single color	Tunable white	RGB	RGBW	RGBWW
Indicator light	○	●	●	●	●

LENNY-PAN-K1 1 ZONE control

Smart LED control system

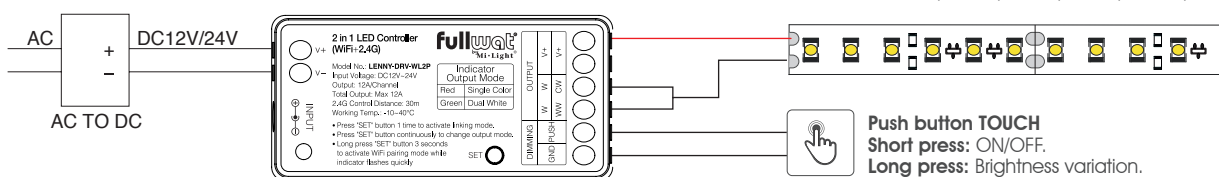
Led Strip-controller connection

Connection drawing

2 in 1 driver **LENNY-DRV-WL2P**

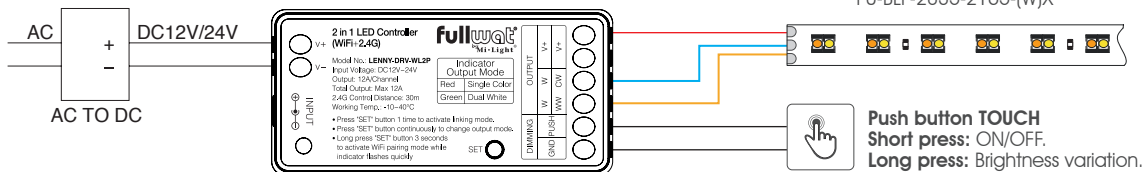
SINGLE COLOR

Valid for models:
DOMOX-2835-XX FU-BLF-XX CCTX-2835-XX
XX: 2100 / 2300 / 2700 / 3000 / 40000 / 6000K



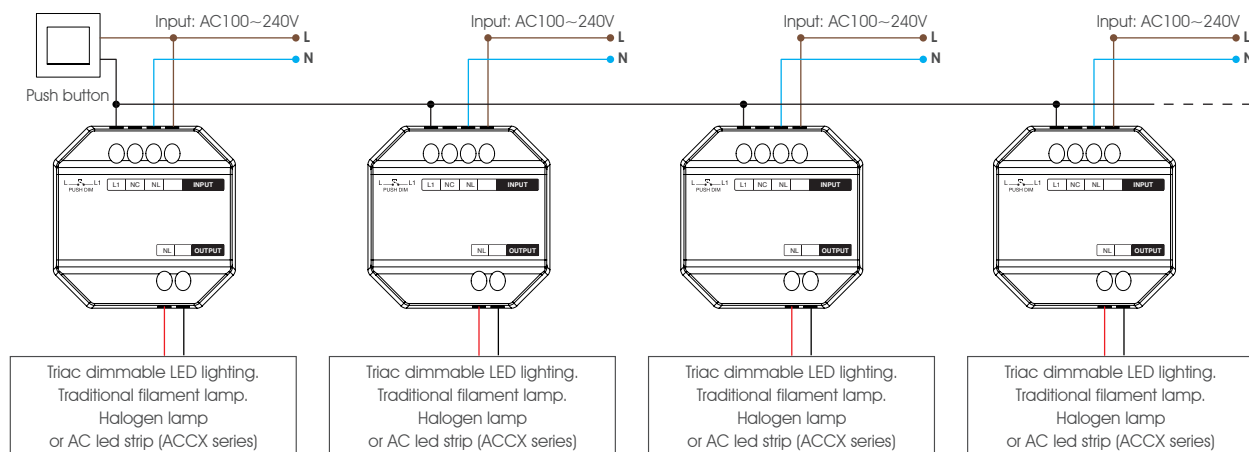
TUNABLE WHITE

Valid for models:
FU-BLF-2835-2165-(W)X



Press "SET" continuously to switch between single color and tunable white mode.

LENNY-TRIAC1 Push button control



Functioning

Short press: Switches the connected device ON/OFF.

Long press (press and hold): increases or decreases the intensity of the light.

Connection

The maximum number of TRIACs is 25 pieces and maximum wiring distance from the push button is 20m.

To control everything with a single push button, LENNY-TRIACs must be connected in cascade according to the connection diagram.

LENNY-PAN-K1 1 ZONE control

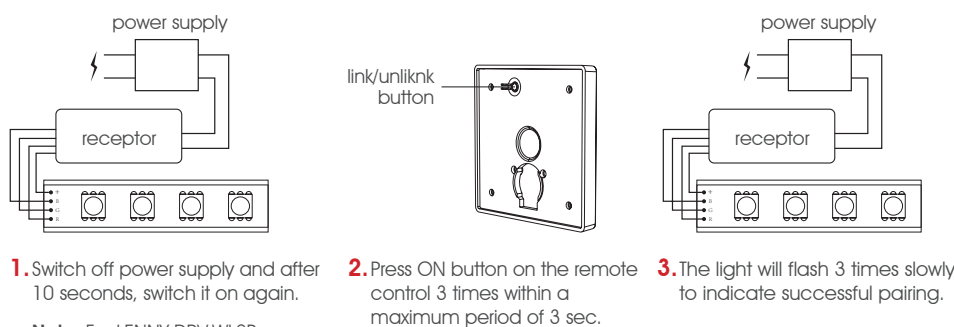
Smart LED control system

System linking and unlinking

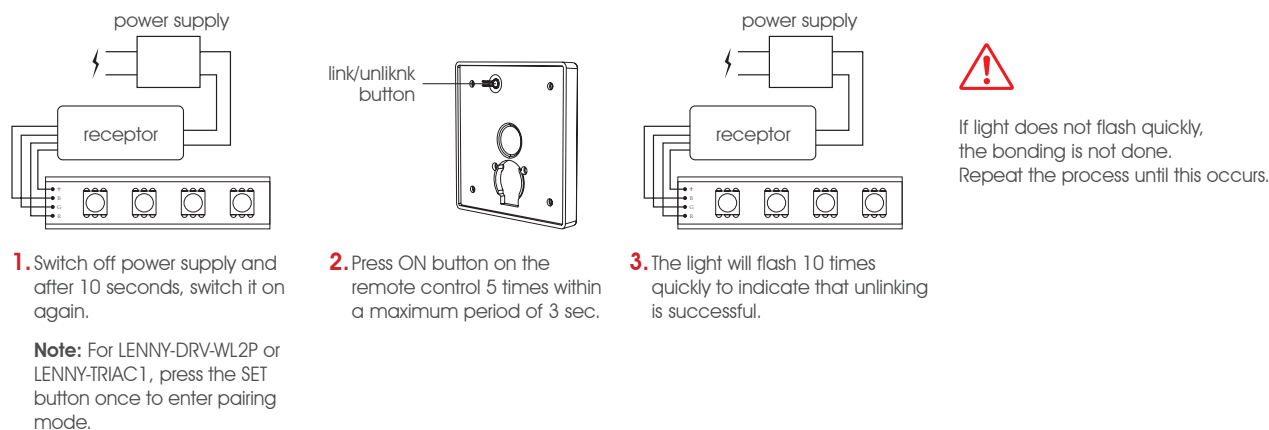
Note: The light only works after the controller is paired with one or more receivers.

Linking. Place Remote controller close to the desired driver to be paired.

Before starting linking process, configure receiver according to the type of LED strip. Refer to "wiring diagram" section (previous point) from the manual.



Unlinking



Attention

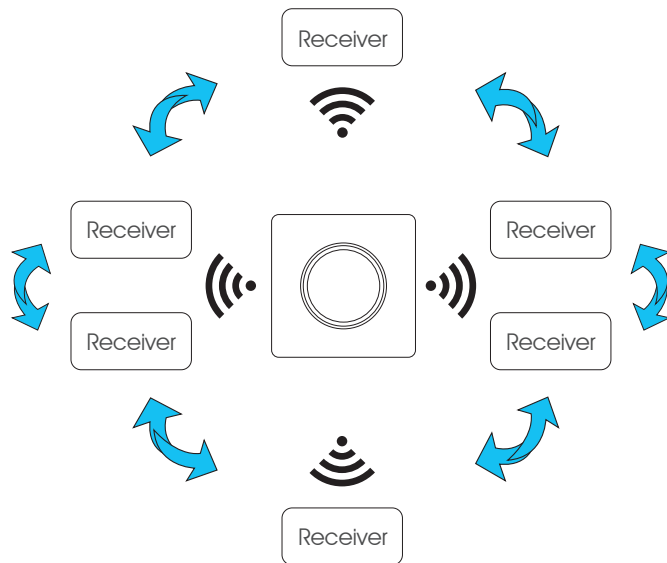
- 1. ⚠ Please check if input voltage is compatible with voltage supported by the driver. Pay special attention not to cross positive and negative poles.
Reversed connection will damage the controller.**
- Do not connect the cables while the power supply is on. Turn it on when you are sure of connections are correct and there is no short circuit is possible.
- Avoid placing driver controller in areas influenced by electromagnetic fields or close to devices that produce electromagnetic fields. Also, do not place driver controller in areas shielded by metal surfaces or where metal surfaces come between the control and the controller.
This would affect operating distance effectiveness.

LENNY-PAN-K1 1 ZONE control

Smart LED control system

Device auto-sync

Different receiver drivers can be connected to operate with the same remote controller and operate in the same modes.

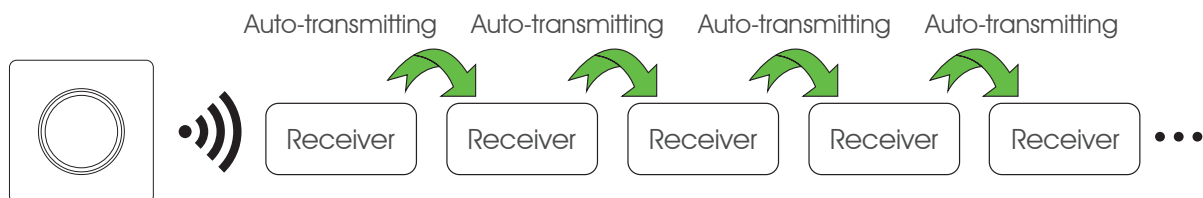


Notes:

1. : Self emitting indication.
2. Remote driver controllers can be paired with the same remote controller within a maximum range of 30 meters. (possible where as free or semi-free spaces and without too many obstacles or walls).

Auto-transmitting function

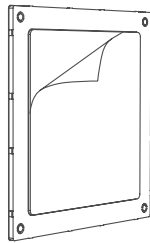
A single remote controller may transmit control signals in succession to other driver controllers provided if maximum coverage distance of 30m is respected between them.



LENNY-PAN-K1 1 ZONE control

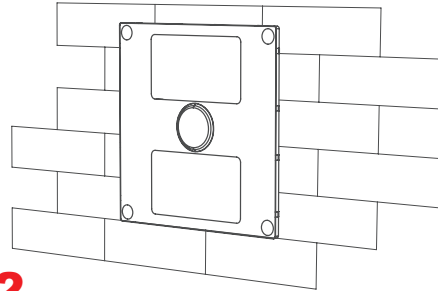
Smart LED control system

Installation diagram - LENNY-PAN-K1



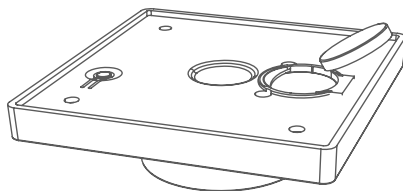
1

Remove rear adhesive foil tape



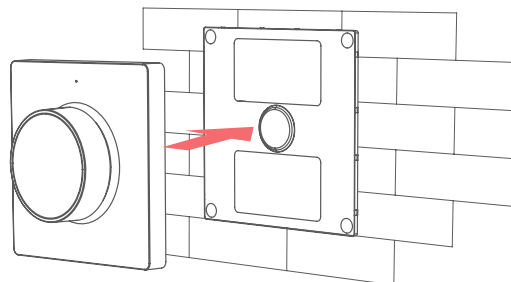
2

Place bracket on the wall with your desired position.



3

Install 2 pcs AAA alkaline batteries.



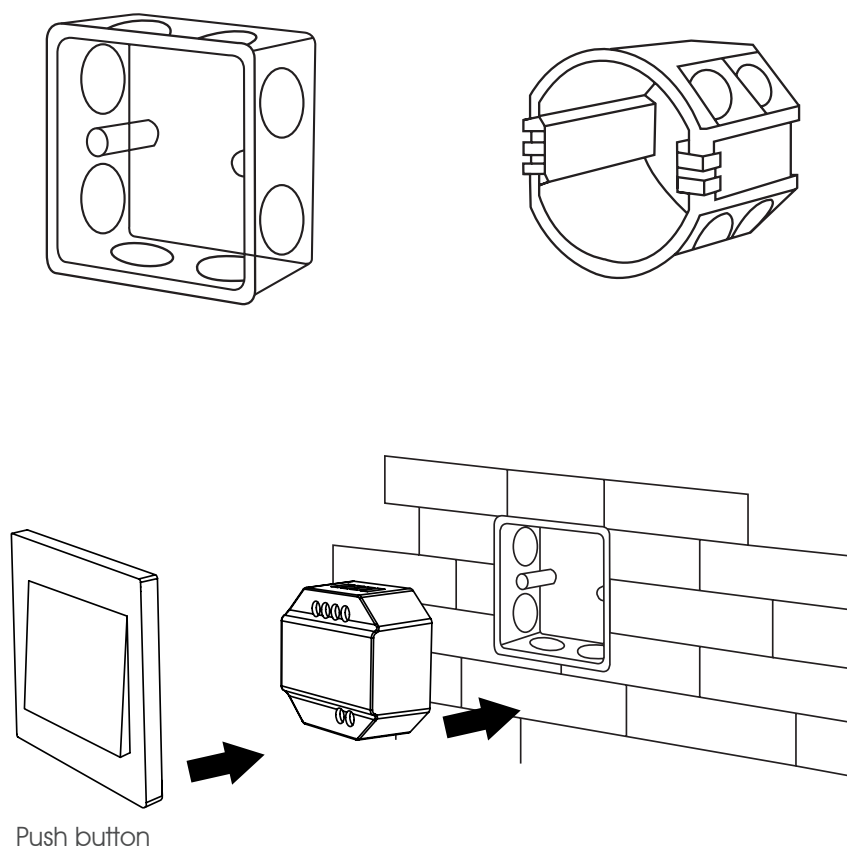
4

Place main panel on the front of the bracket.

LENNY-PAN-K1 1 ZONE control

Smart LED control system

Installation diagram - LENNY-TRIAC1



LENNY-PAN-K1 1 ZONE control

Smart LED control system

Mobile phone pairing

Download and install the application on your mobile phone:

- Via QR code
- Searching the Play Store for "MiBoxer".



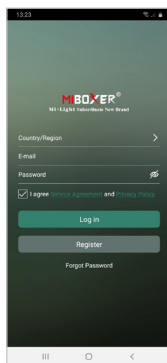
Note:

Also compatible with the application: SMART LIFE

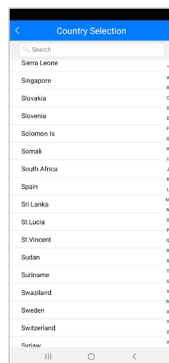
To link our installation with our mobile phone, we will need one of these drivers:

- LENNY-DRV-WL5
- LENNY-DRV-WL2P
- LENNY-DRV-LS2 + LENNY-WIFOX1
- LENNY-TRIAC1 + LENNY-WIFOX1

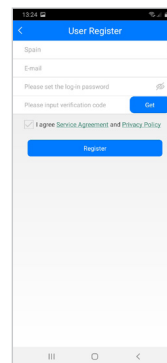
Register in MiBoxer:



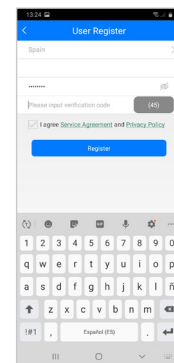
Insert your email
adress



Insert your country



Choose password

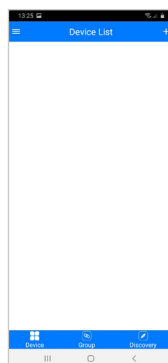


Accept conditions
and terms

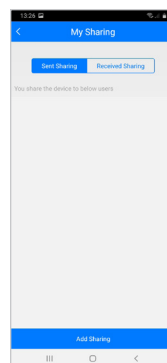
We will receive an e-mail with a registration verification code, which we will have to enter in the application to finish registering account.

In order to use the application, we must activate GPS on our mobile phone (either Android or Apple).

Once on the main screen and our session started, we must add the device. To do this:



Push "+" to
add device



Push
"add sharing".

LENNY-PAN-K1 1 ZONE control

Smart LED control system

Mobile phone pairing

Select device model:



For model LENNY-DRV-WL5:

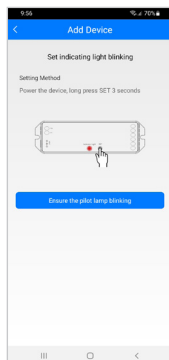
Click on "Smart Strip Controller (WL5)".

For model LENNY-DRV-WL2P:

Click on "LED controller (FUT035W-FUT039W)".

For model LENNY-DRV-LS2 or model LENNY-TRIAC1:

Click on "2.4GHz Gateway (WL-Box1)".



For model LENNY-DRV-WL5:

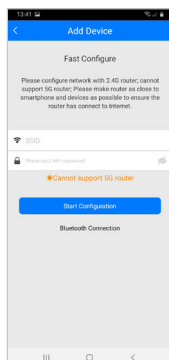
Disconnect power supply from LENNY-DRV-WL5 for 10 sec.

After 10 seconds, power the controller and within the first three seconds, press and hold "SET" button on the receiver until LED on the receiver flashes.

For models LENNY-DRV-WL2P / LENNY-DRV-LS2 / LENNY-TRIAC1:

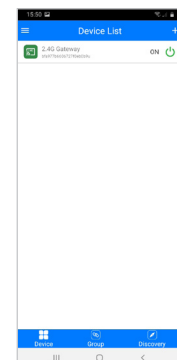
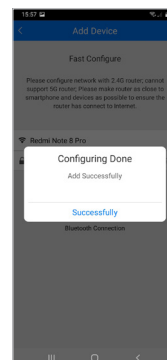
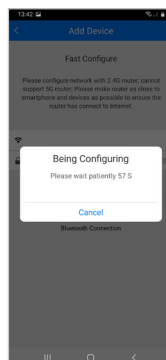
Press SET button on device or on WIFI gateway for 3 seconds to activate WIFI signal.

In both cases, on the phone screen, click on "Ensure pilot lamp blinking".



Enter network name and password.

Attention: only 2.4GHz network is supported (no 5G) and click on "Start configuration".



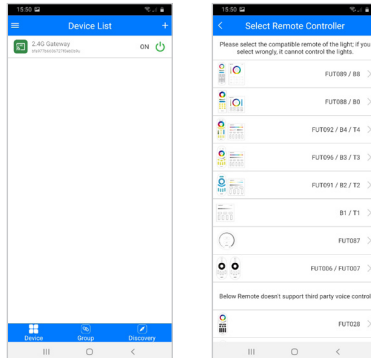
A countdown will appear and once paired, it will indicate that pairing has been successful.

Our device will appear in the list of paired devices.

LENNY-PAN-K1 1 ZONE control

Smart LED control system

Mobile phone pairing

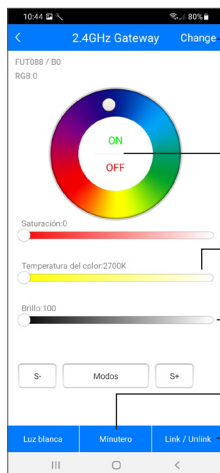


Whether we have to use the WIFI gateway (LENNY-WIFOX1):

We must link the driver to be controlled via the APP. To do this, click on 2.4GHz gateway.

First we must choose whether we are going to configure one or more zones. In this case, as it is a zone, we enter the "change" section and select FUT088/B0.

On the screen of our mobile phone we will see image as follows:



If you want to change the remote control / remote panel, click on "change" and select the one you have chosen from the list.

ON / OFF.

Change temperature color if our connected device allows it.

Brightness control

Timer.

Link / Unlink.



Click on "Link/Unlink".

Click on "link" to link and on "unlink" to unlink.

Remove the power supply to controller for 10 seconds.

After 10 seconds, power the controller and in the first 3 seconds, click on the mobile screen on "link" or "unlink".

The light will flash three times and confirm correct linking.

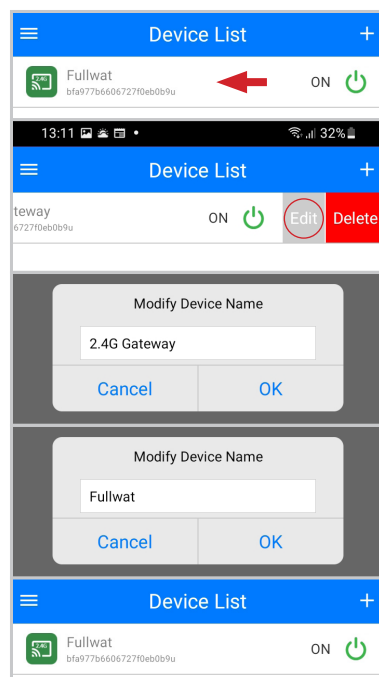
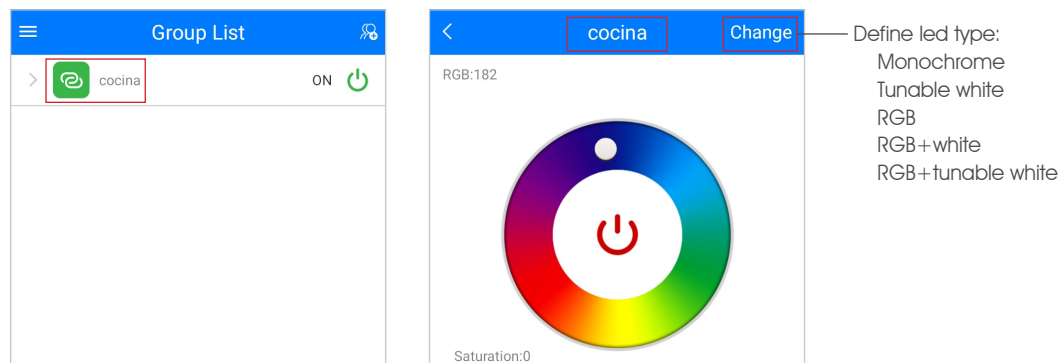
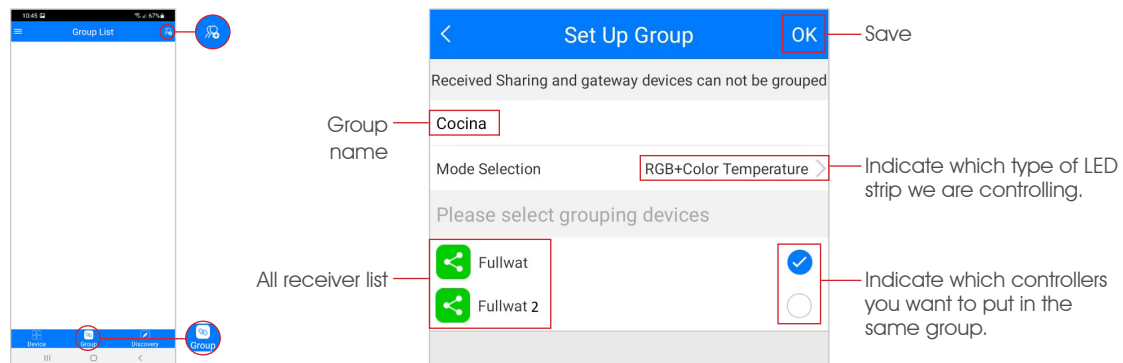
In the case of unlink, light will flash 10 times for confirmation.

LENNY-PAN-K1 1 ZONE control

Smart LED control system

Mobile phone pairing

The application allows us to create groups with different receivers. This will allow us to control several receivers at the same time: turn ON / OFF / change the color, etc.



Once we have linked our receiver we can change our device name. This is interesting if we are going to control with Alexa, Google Assistant or Google Home.

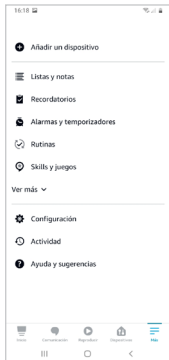
To do so, we press and hold name of the device on the screen and move it to the left. We will see an "edit" and a "delete". Click on "Edit", change the name and "Ok".

LENNY-PAN-K1 1 ZONE control

Smart LED control system

ALEXA linking

To control system with Alexa, a wifi gateway is required, either built into receiver or using LENNY-WIFOX1 gateway.
Install Alexa app and log in using your account.
We need to install Mi-Light Smart skill. To do so:



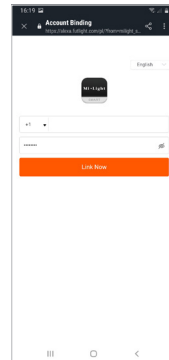
Click on "more" and select "Skill and games".



In the search engine type "Mi-Light Smart" and click on this option.



We allow application using.



Log in with your MiBoxer data.

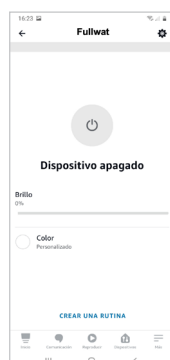
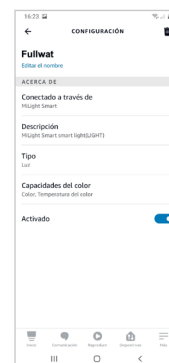
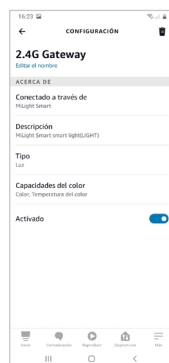


If everything is correctly done, we will see a message of successful linking

Once reached step as above, Alexa will detect our receiver automatically and we will be able to change its name, include it in a group or control it by voice.

If receiver is not detected automatically, we can push "detect devices" via Alexa app function.

Now you can work with standard ALEXA managing.



We can rename device to be able to control that device only instead the whole group, command Alexa to turn off/on the device, etc.

LENNY-PAN-K1 1 ZONE control

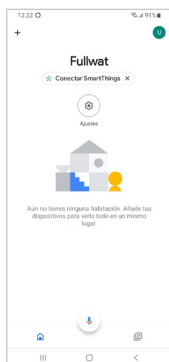
Smart LED control system

GOOGLE HOME linking

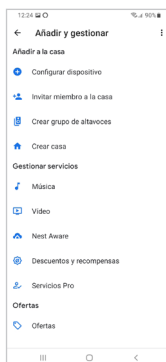
To control system with Google Home, a wifi gateway is required, either built into the receiver or using LENNY-WIFOX1 gateway.

Install Google Home app and log in with your Google account. If you have not yet configured your home, you can do this now or later.

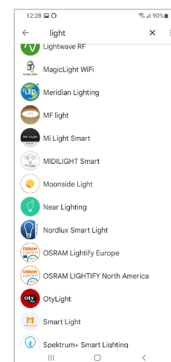
We need to install Mi-Light Smart skill. To do this:



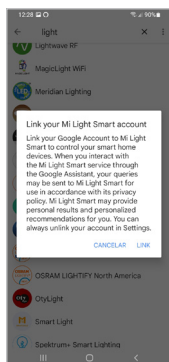
Click on "more".



Select "Configure device".



Look for the "Mi-Light Smart" application in the list of applications.



You may get a link warning message. Click on "Link" to accept.

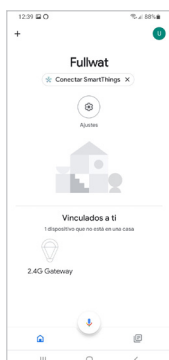


Log in with your MiBoxer data.

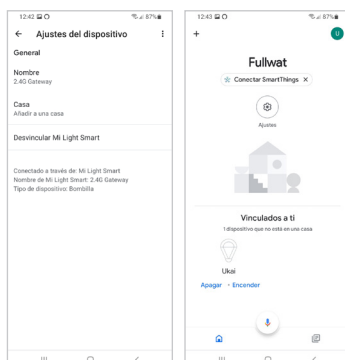


If we do it correctly, a successful linking message will appear.

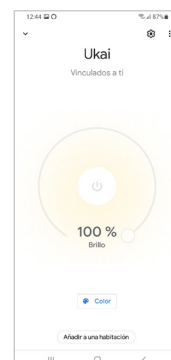
Once we have reached this point, the linking is done.



On the main Google Home screen, our home will appear with our device.



We can rename device to make "name it" easier.



Clicking on the device icon, you are reaching another page where you can control the lights too.



LENNY-PAN-K1 1 ZONE control

Smart LED control system

GOOGLE ASSISTANT linking

To control system with Google Assistant, a wifi gateway is required, either built into the receiver or using LENNY-WIFOX1 gateway.

And Install Google Assistant application via PlayStore on your phone:



We must configure it to recognize your voice. Then enter "settings" in the application and click on "Voice Match".

The application will ask you to repeat two phrases several times.

Once this is done, we will be able to "call" our device using "Ok Google". For example, "Ok Google turn on Fullwat" and LED strips connected to Fullwat receiver will light up properly.

LENNY-PAN-K1 1 ZONE control

Smart LED control system

Compatibility table

	Single color	CCT	RGB	RGBW	RGBWW	"Mobile app Alexa Google Home"	Zones
LENNY-DRV-LS2 LENNY-DRV-LS2S 5-in-1 standard receiver	LENNY-MD-085	LENNY-MD-085				LENNY-WIFOX1 gateway is required	1
	LENNY-MD-086	LENNY-MD-086	LENNY-MD-086	LENNY-MD-086	LENNY-MD-086		1
	LENNY-MD-087						1
	LENNY-MD-088	LENNY-MD-088	LENNY-MD-088	LENNY-MD-088	LENNY-MD-088		1
	LENNY-PAN-B0	LENNY-PAN-B0	LENNY-PAN-B0	LENNY-PAN-B0	LENNY-PAN-B0		1
	LENNY-PAN-K1	LENNY-PAN-K1					1
	LENNY-MD-007	LENNY-MD-007					4
	LENNY-MD-092	LENNY-MD-092	LENNY-MD-092	LENNY-MD-092	LENNY-MD-092		4
	LENNY-PAN-B4	LENNY-PAN-B4	LENNY-PAN-B4	LENNY-PAN-B4	LENNY-PAN-B4		4
	LENNY-MD-089	LENNY-MD-089	LENNY-MD-089	LENNY-MD-089	LENNY-MD-089		8
	LENNY-PAN-B8	LENNY-PAN-B8	LENNY-PAN-B8	LENNY-PAN-B8	LENNY-PAN-B8		8
	LENNY-PAN-B8	LENNY-PAN-B8	LENNY-PAN-B8	LENNY-PAN-B8	LENNY-PAN-B8		8
LENNY-DRV-WL5 5 in 1 wifi receiver	LENNY-MD-085	LENNY-MD-085				included	1
	LENNY-MD-086	LENNY-MD-086	LENNY-MD-086	LENNY-MD-086	LENNY-MD-086		1
	LENNY-MD-087						1
	LENNY-MD-088	LENNY-MD-088	LENNY-MD-088	LENNY-MD-088	LENNY-MD-088		1
	LENNY-PAN-B0	LENNY-PAN-B0	LENNY-PAN-B0	LENNY-PAN-B0	LENNY-PAN-B0		1
	LENNY-PAN-K1	LENNY-PAN-K1					1
	LENNY-MD-007	LENNY-MD-007					4
	LENNY-MD-092	LENNY-MD-092	LENNY-MD-092	LENNY-MD-092	LENNY-MD-092		4
	LENNY-PAN-B4	LENNY-PAN-B4	LENNY-PAN-B4	LENNY-PAN-B4	LENNY-PAN-B4		4
	LENNY-MD-089	LENNY-MD-089	LENNY-MD-089	LENNY-MD-089	LENNY-MD-089		8
	LENNY-PAN-B8	LENNY-PAN-B8	LENNY-PAN-B8	LENNY-PAN-B8	LENNY-PAN-B8		8
	LENNY-PAN-B8	LENNY-PAN-B8	LENNY-PAN-B8	LENNY-PAN-B8	LENNY-PAN-B8		8
LENNY-DRV-WL2P 2 in 1 receiver with wifi and push button	LENNY-MD-085	LENNY-MD-085				included	1
	LENNY-MD-086	LENNY-MD-086					1
	LENNY-MD-087						1
	LENNY-MD-088	LENNY-MD-088					1
	LENNY-PAN-B0	LENNY-PAN-B0					1
	LENNY-PAN-K1	LENNY-PAN-K1					1
	LENNY-MD-007	LENNY-MD-007					4
	LENNY-MD-092	LENNY-MD-092					4
	LENNY-PAN-B4	LENNY-PAN-B4					4
	LENNY-MD-089	LENNY-MD-089					8
	LENNY-PAN-B8	LENNY-PAN-B8					8
	LENNY-PAN-B8	LENNY-PAN-B8					8
LENNY-TRIAC1 Driver TRIAC	LENNY-MD-085					LENNY-WIFOX1 gateway is required	1
	LENNY-MD-086						1
	LENNY-MD-087						1
	LENNY-MD-088						1
	LENNY-PAN-B0						1
	LENNY-PAN-K1						1
	LENNY-MD-007						4
	LENNY-MD-092						4
	LENNY-PAN-B4						4
	LENNY-MD-089						8
	LENNY-PAN-B8						8
	LENNY-PAN-B8						8

LENNY-PAN-K1 1 ZONE control

Smart LED control system

Table of controls by zones

1 ZONE



LENNY-MD-085



LENNY-MD-086



LENNY-MD-087



LENNY-MD-088



LENNY-MD-B0

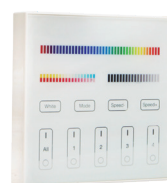


LENNY-PAN-K1

4 ZONES



LENNY-MD-007



LENNY-PAN-B4



LENNY-MD-092

8 ZONES



LENNY-MD-089



LENNY-PAN-B8