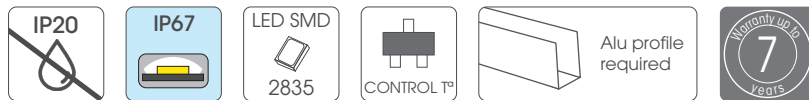


Led Strips Professional Series

CCTX-2835-XX97-(W)X

Dimmable LED strip with temperature control
SMD2835 - 60Leds/meter



Features

New PCB with ADF Technology, 50% thicker than previous one to improve cooling rating.
Improved circuit desing with constant current and temperature control to get better lifespan.

High Performance LM80 certified 2835 LEDs.

Cutting by groups to facilitate use.

Uniform brightness throughout entire length.

24VDC power supply to get better reliability

"SDCM 3" MacAdam selection "step3"

Highest performance original 3M VHB back adhesive tape.

CRI>97 standard rate.

CE, LVD & EMC European certificates available.

* LM80 CERTIFIED:
LED LIFESPAN tested under LM80;
Expected LIFETIME of 30,000h.

CCTX-2835-XX97-(W)X

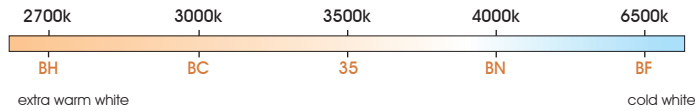
Professional series



Dimmable LED strip with temperature control

- 60 Led/m
- 12 W/m
- 24V
- Warranty up to 7 years
- ≤1200 lm/m
- LED SMD 2835
- MacAdam 3 level SDCM BIN1
- R9 >85
- special CRI >97
- CONTROL™

White color temperature range



- 10 Max. meters in series (one side powered)
- VHB 3M
- driver NOT included
- 120°
- 5m
- 16,66mm
- 10cm
- 30,000 h
- 20 Max. meters in series (two side powered)
- ADF PCB
- Do not bend
- ESD
- Dimmable
- Alu profile required
- Working: 50°C / -20°C
- Storage: 60°C / -40°C

Features

Part number	CCT / wavelength	Luminous intensity per m / flux	Efficiency lm / W	Energy efficiency	Ordinary strip	Strip with waterproof part number "W" suffix
CCTX-2835-BH97-(W)X	±2700–2800k	±1125lm	±94	F	 5000mm, 1,25mm, 10mm	 5000mm, 4mm, 12mm
CCTX-2835-BC97-(W)X	±2950–3100k	±1140lm	±95	F		
CCTX-2835-3597-(W)X	±3400–3500k	±1160lm	±97	F		
CCTX-2835-BN97-(W)X	±3900–4050k	±1170lm	±98	F		
CCTX-2835-BF97-(W)X	±6400–6600k	±1200lm	±100	F		

No color temperature deviation.

Notes

Waterproof led strips covered by silicone material use to suffer an unavoidable CCT value modification owing to optical effect caused when light beam passes silicone material. Initial CCT values are increased several hundreds or thousands of °K. This increasing is much higher in coldest white CCTs. New FULLWAT molded silicone system avoids this effect and our waterproof led strips are CCT rated at original value without modification. Please, contact with your local sales office to get wider details.

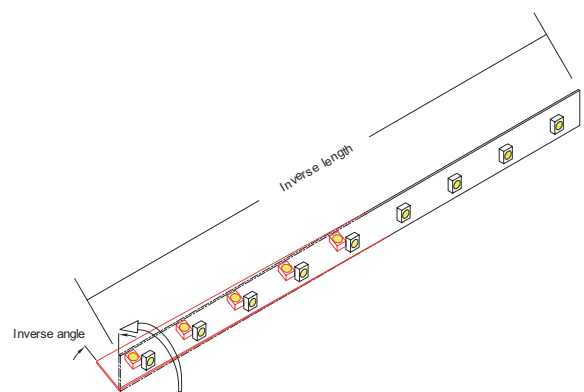
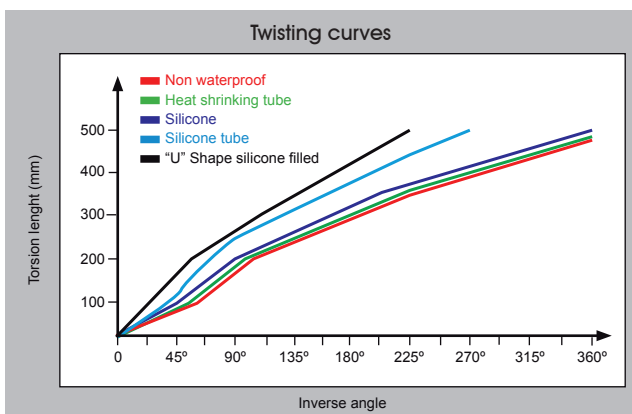
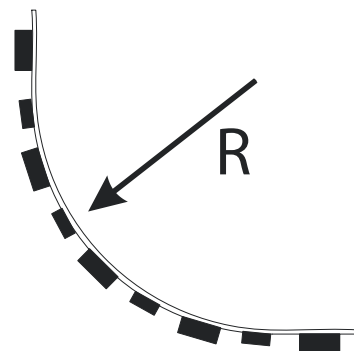
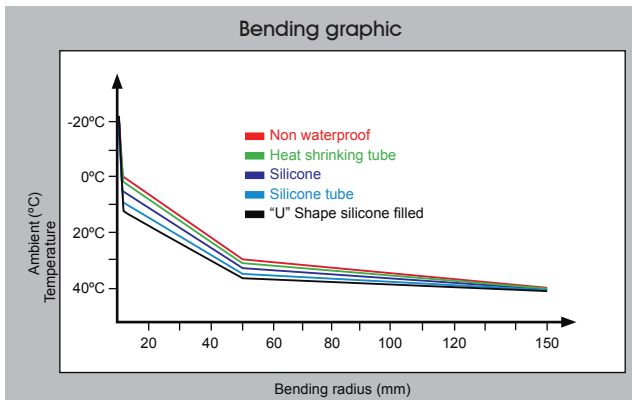
25 length models are available.

50 length models are available under request. Contact to our Sales Department.

Specific parameters

Reference	Waterproof materials	Size (mm)	Connections	Mode of fixation	IP rate
CCTX-2835-BF97-X	Non waterproof	10x1.25mm	Silicone wire red and white	Adhesive 3M VHB	IP20
CCTX-2835-BF97-WX	Silicone extruded tube	12x4mm	5.5mm DC cable	Adhesive 3M VHB	IP67

Bending grades



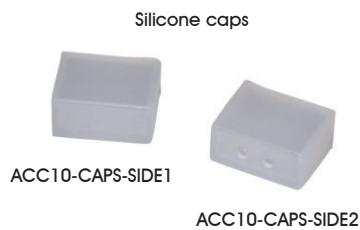
Reference point: strip bending at 0°C.

■ WATERPROOF MODEL

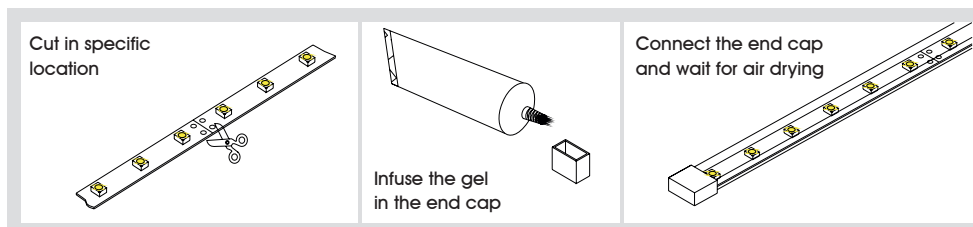
Features

- IP67 Rating with high performance molded silicone.
- High temperature, maximum flexibility, anti- UV, non toxic and improved optical transmittance >92%
- **New waterproof molded** silicone system to avoid CCT (color temperature) values modifications. Improved soldering pads in every cutting areas.

Optional accesories



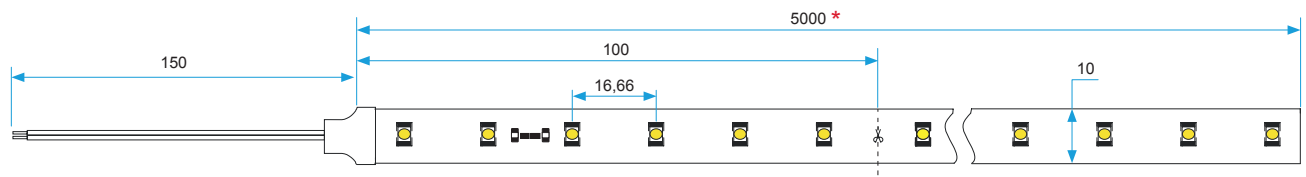
Handling



Product size

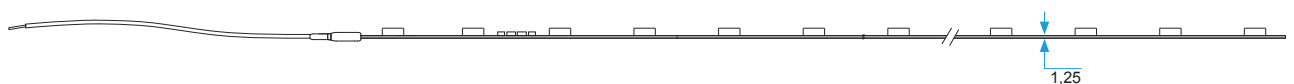
Front view

Units: mm



Side view

Units: mm



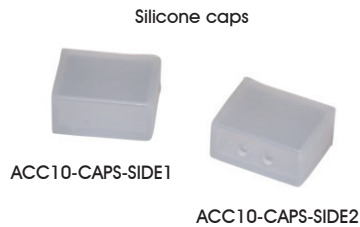
* 25 length models are available for references CCTX-2835-XX97-X/25.
50 length models are available for references CCTX-2835-XX97-X/50.

■ WATERPROOF MODEL

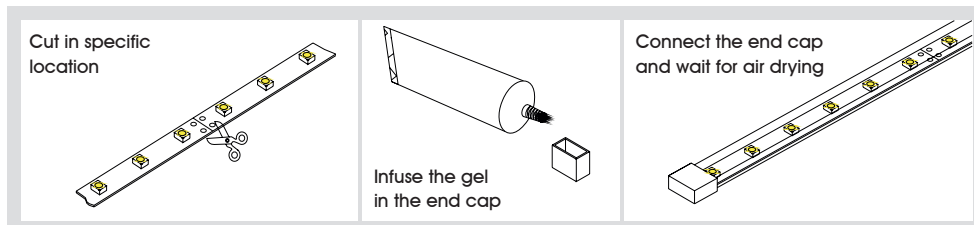
Features

- IP67 Rating with high performance molded silicone.
- High temperature, maximum flexibility, anti- UV, non toxic and improved optical transmittance >92%
- **New waterproof molded** silicone system to avoid CCT (color temperature) values modifications. Improved soldering pads in every cutting areas.

Optional accessories



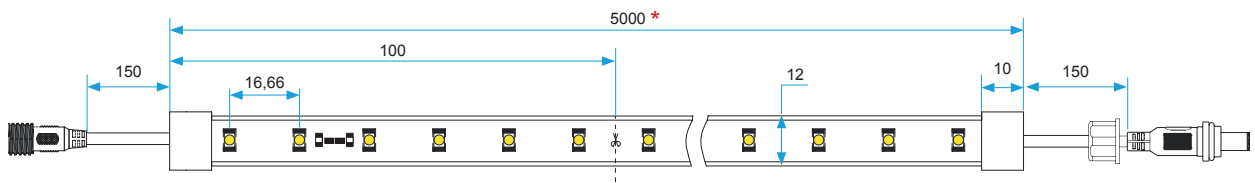
Handling



Product size

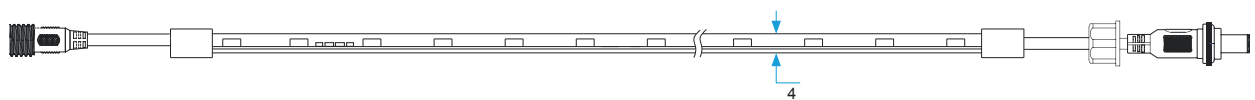
Front view

Units: mm



Side view

Units: mm



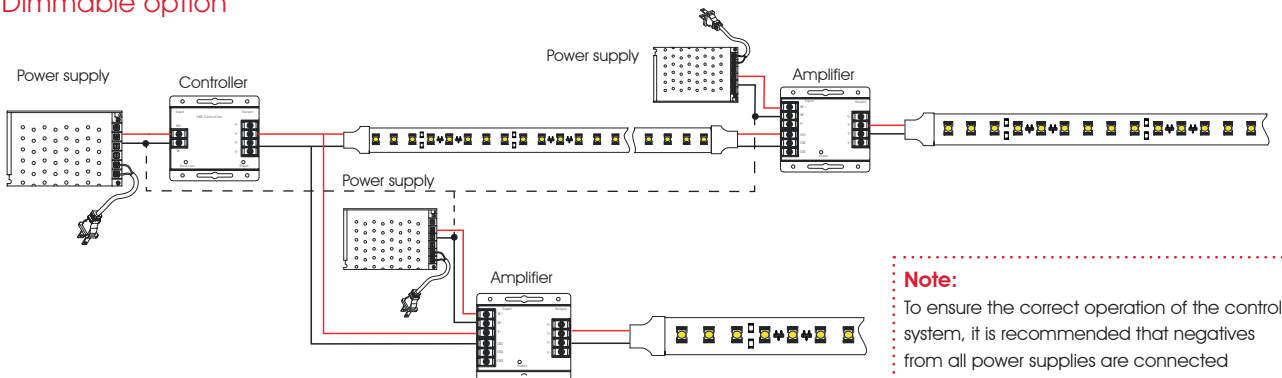
* 25 length models are available for references CCTX-2835-XX97-WX/25.
50 length models are available for references CCTX-2835-XX97-WX/50.

CONNECTION DIAGRAMS

Non dimmable option



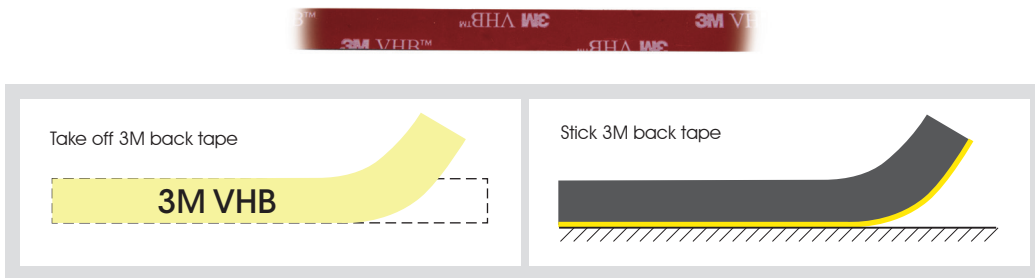
Dimmable option



Note:
To ensure the correct operation of the control system, it is recommended that negatives from all power supplies are connected together.

INSTALLATION

Adhesive 3M VHB



PACKAGING

