

Led Strips Standard Series

DOMOX-5060-RGB-H(WP)X

Dimmable LED strip SMD5060 60 LED/m



Features

- LED 5060 SMD RGB with three chip in one LED as lighting resources.
- Input Voltage DC 24V.
- Can be cut by 6 led and connect again by our accessories.
- With 3M adhesive tape back, easy for installation.

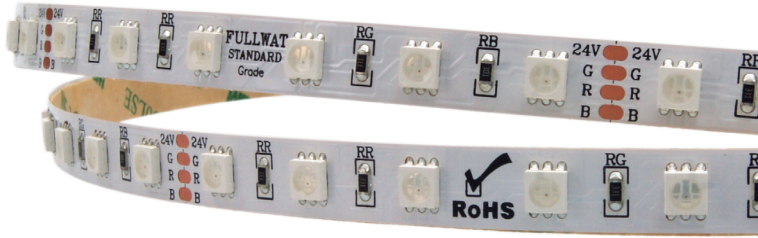
Application

- Cover lighting.
- Architectural light for canopy, corridor, window, archway.
- Backlight for edge lighting for signage.
- DIY lights for home use.
- Path and contour marking.
- Decorative lights for events, shows, exhibitions.

*LM80 CERTIFIED:
LED LIFESPAN tested under LM80;
Expected LIFETIME of 30,000h.

DOMOX-5060-RGB-H(WP)X

Standard series



Dimmable LED strip SMD5060 60 LED/m

60
Led/m

12
W/m

24V

5
Years

≤460
lm/m

LED SMD

5050

RGB

RGB full color



10 Max. meters in series (one side powered)	3M 300 LSE	driver NOT included	120° 	5m 	16,6mm 	Scissors icon 10cm	Clock icon 30.000 h
20 Max. meters in series (two side powered)	 Do not bend	 ESD	 Dimeable	 Alu profile required	Working 50°C -20°C	Storage 60°C -40°C	

Features

Part number	CCT / wavelength	Luminous intensity per m / flux	Efficiency lm / W	Energy efficiency	Ordinary strip	Waterproof strip part number "WP" suffix
DOMOX-5060-RGB-H(WP)X	(R) ±625nm (G) ±520nm (B) ±465nm	±460lm	±38	G →	<div style="border: 1px solid black; padding: 5px; text-align: center;">IP20 </div>	<div style="border: 1px solid black; padding: 5px; text-align: center;">IP54 </div>

Notes

25m

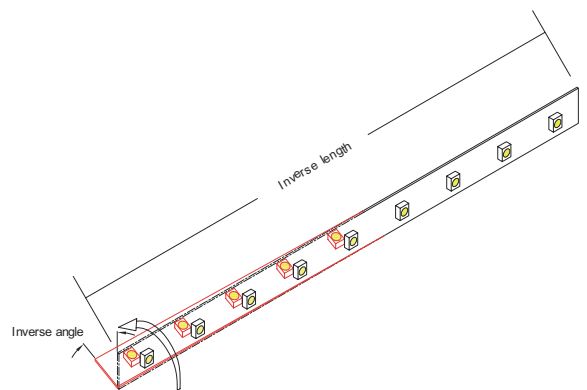
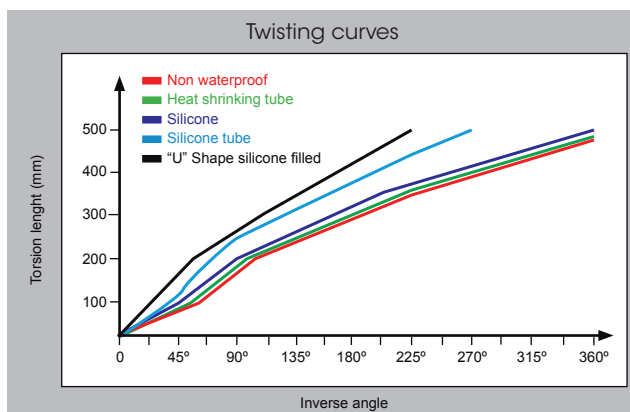
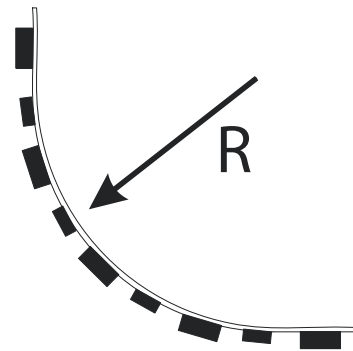
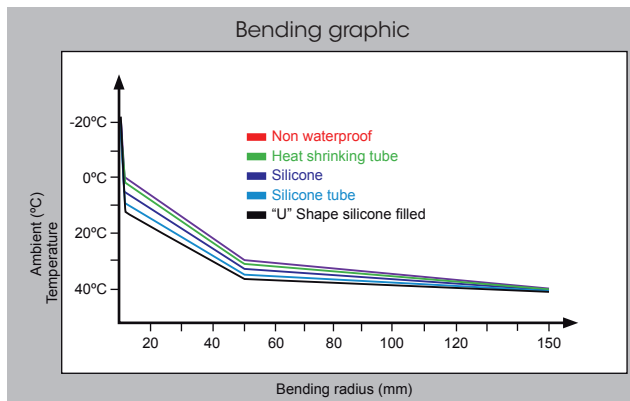
50m

25/50 Length models are available under request.
Contact to our Sales Department.

Specific parameters

Reference	Waterproof materials	Size (mm)	Connections	Mode of fixation	IP rate
DOMOX-5060-RGB-HX	NonWaterproof	10x1,25	Silicone wire red and white	Adhesive 3M 300 LSE	IP20
DOMOX-5060-RGB-HWPX	D shape silicone	10x3	Silicone wire red and white	Adhesive 3M 300 LSE	IP54

Bending grades



Reference point: strip bending at 0°C.

NON WATERPROOF MODEL

Features

- With 3M 300LSE adhesive tape, it is easy for installation. IP20.
- Small in size, light in weight, flexible.



Optional accesories

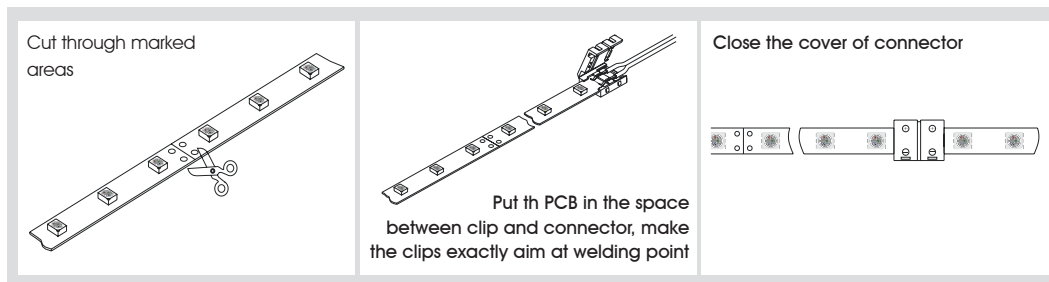


ACC10-JOIN-RGB-300



ACC10-CABLE-RGB-150

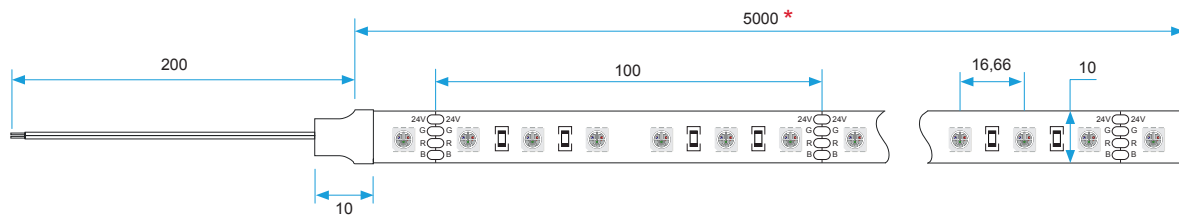
Operation specification



Product size

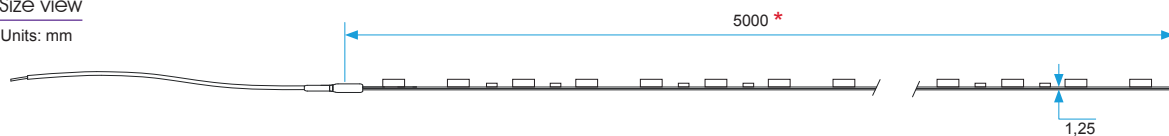
Front view

Units: mm



Size view

Units: mm



* 25 meter models for references DOMOX-5060-RGB-HX/25.
50 meter models for references DOMOX-5060-RGB-HX/50.

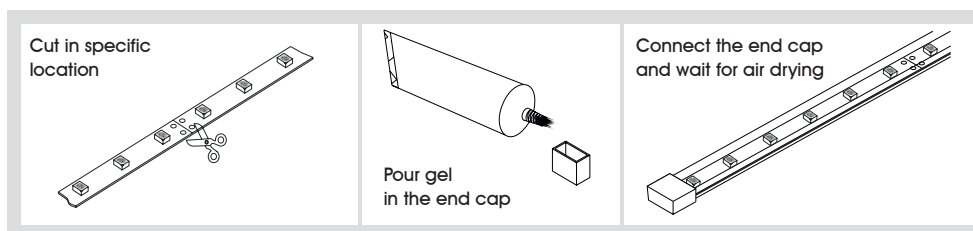
WATERPROOF MODEL

Features

- The strip is well protected by silicone tube IP54.
- High temperature resistance high flexibility, anti UV, high light transmittance ($\geq 92\%$), non-toxic.



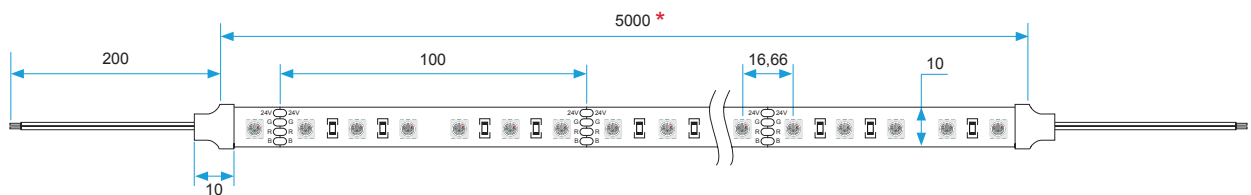
Operation specification



Product size

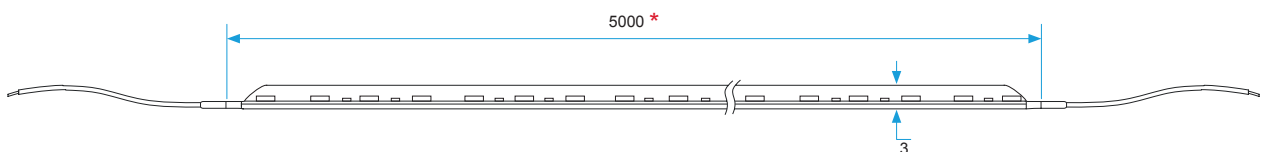
Front view

Units: mm



Size view

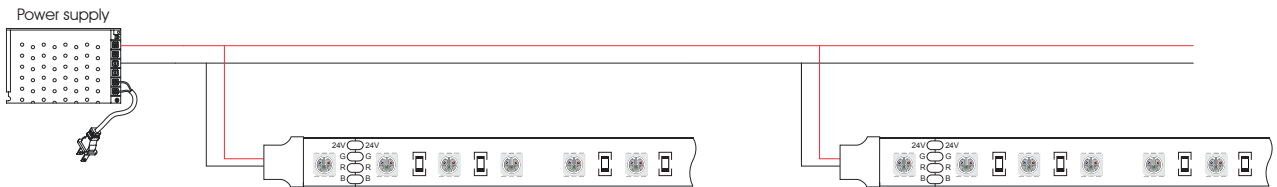
Units: mm



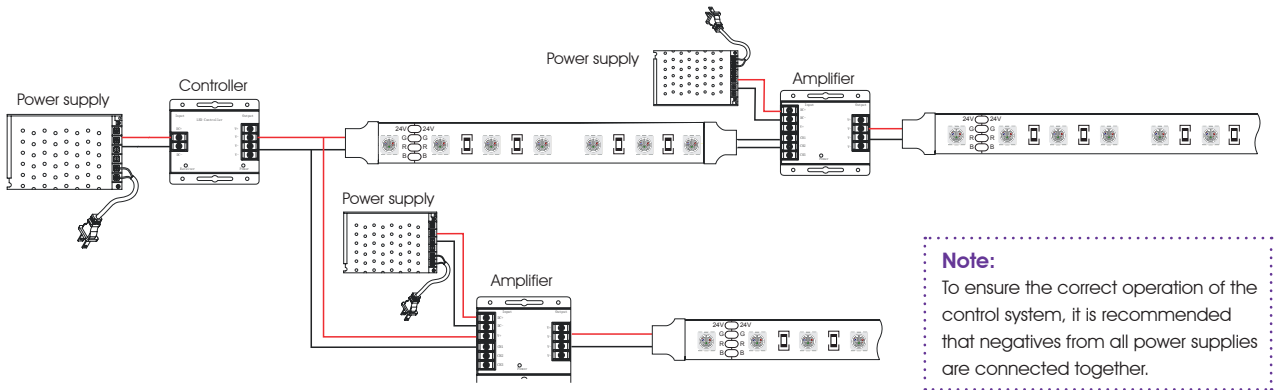
* 25 meter models for references DOMOX-5060-RGB-ESPWPX/25.
50 meter models for references DOMOX-5060-RGB-ESPWPX/50.

CONNECTION DIAGRAMS

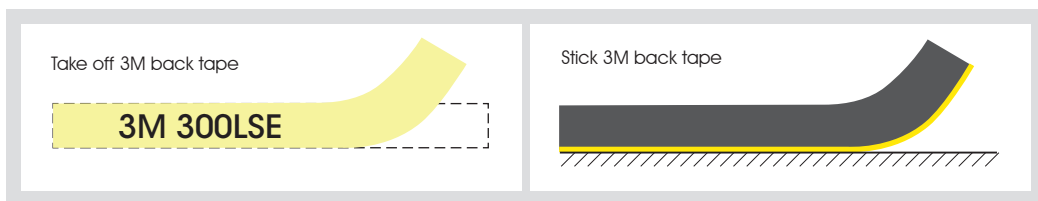
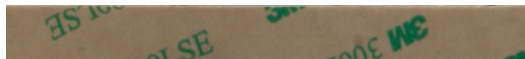
Non dimmable option



Dimmable option



Adhesive 3M 300LSE



PACKAGING

