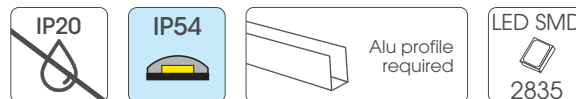




Standard series led strip

DOMOX-2835-XX-001 (WP)

Dimmable strip with 60 SMD2835 leds per meter



Features

- High brightness SMD 2835 LEDs according to "LM80".
- Allows cutting by groups to facilitate its use.
- Uniform shine along its entire length.
- Powered at 12VDC, safe and suitable for universal use.
- "SDCM5" Selection of MacAdam "step5".
- "3M 300LSE" High performance adhesive.
- Standard color reproduction "CRI>83".
- Optional color reproduction "CRI>90".
- International certifications available.

* COMPLIANT WITH LM80:

The life of the LED diodes has been tested according to the LM80 standard to reach an expectation of 30,000 hours or more.

DOMOX-2835-XX-001(WP)

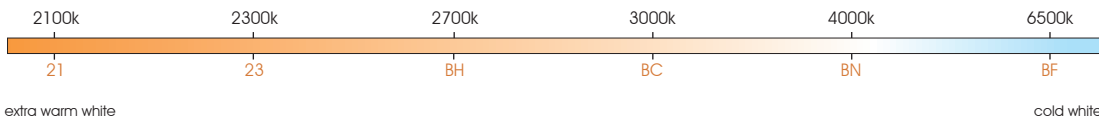
Standard series



Standard Grade High Efficiency LED Strip

60 Leds/m	3 W/m	12V	5 Years Warranty up to
≤480 lm/m	≤160 lm/w	LED SMD 2835	MacAdam 5 level SDCM BIN 1
standard CRI >83	optional CRI >90		

White color temperature range



10 Max. meters in series (one side powered)	3M 300 LSE	driver NOT included	120°	5m	16,66mm	5cm	30.000 h
20 Max. meters in series (two side powered)	Do not bend	ESD	Dimmable	Alu profile required	Working 50°C -20°C	Storage 60°C -40°C	

Features

Part number	CCT / wavelength IP20	IP54	Luminous intensity per m / flux	Efficiency lm / W	Energy efficiency	Ordinary strip	Waterproof strip part number "WP" suffix
DOMOX-2835-21-001(WP)	±2050~2150k	±2600k	±400lm	±133	D	 	
DOMOX-2835-23-001(WP)	±2250~2350k	±2900k	±400lm	±133	D		
DOMOX-2835-BH-001(WP)	±2650~2800k	±3100k	±420lm	±140	D		
DOMOX-2835-BC-001(WP)	±2950~3250k	±3500k	±420lm	±140	D		
DOMOX-2835-BN-001(WP)	±3800~4200k	±6000k	±480lm	±160	C		
DOMOX-2835-BF-001(WP)	±6400~6700k	±22000k	±480lm	±160	C		

Notas



25 length models are available.



50 length models are available under request. Contact to our Sales Department.

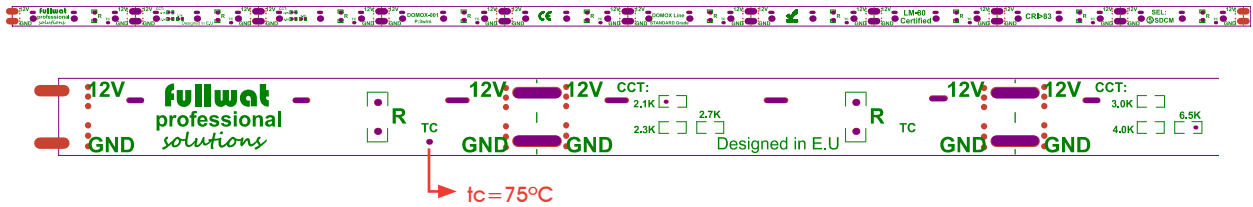


IP54 models 10m maximum

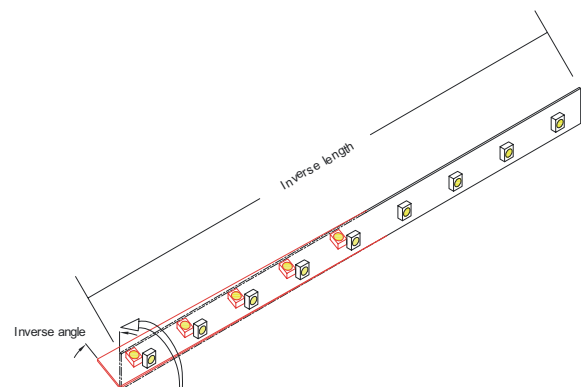
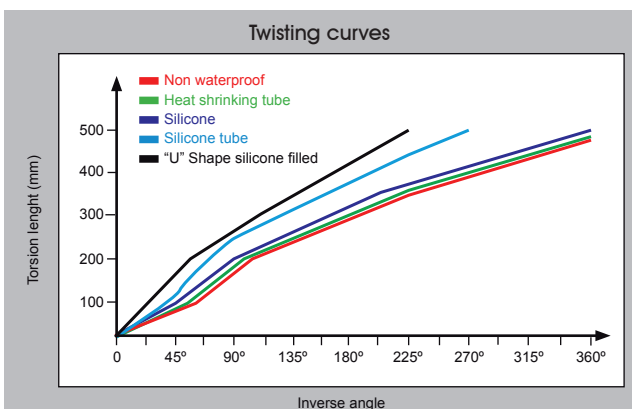
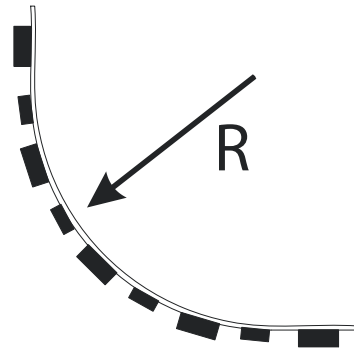
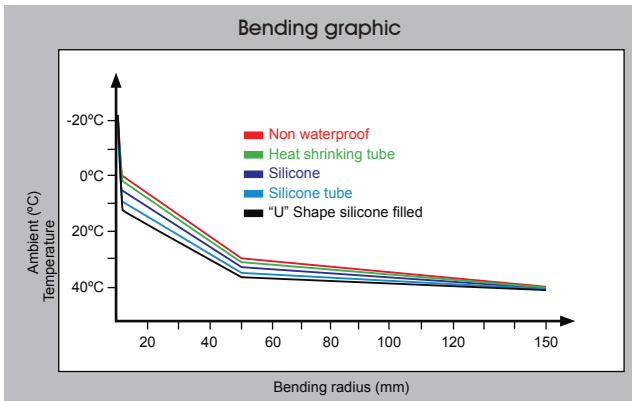
Specific parameters

Reference	Waterproof material	Size (mm)	Connections	Modo de Fijación	Grado IP
DOMOX-2835-BN-001	No es estanco	8x1.25mm	Wire red and black	Adhesive 3M 300 LSE	IP20
DOMOX-2835-BN-001WP	Media luna de silicona	8x3mm	Wire red and black	Adhesive 3M 300 LSE	IP54

PCB Layout



Bending grades



Reference point: strip bending at 0°C.

NON-WATERPROOF MODEL

Features

- IP20 easier assembling 3M 300LSE.
- Small in size, light in weight, flexible.



Optional accesories

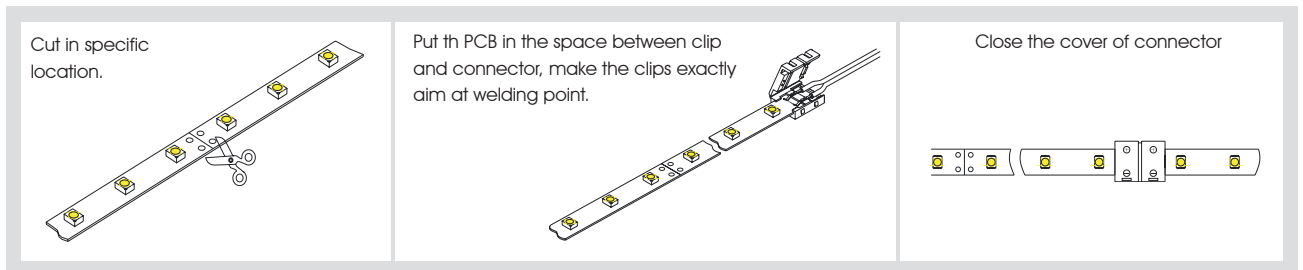
ACC8-JOIN-300



ACC8-CABLE-300



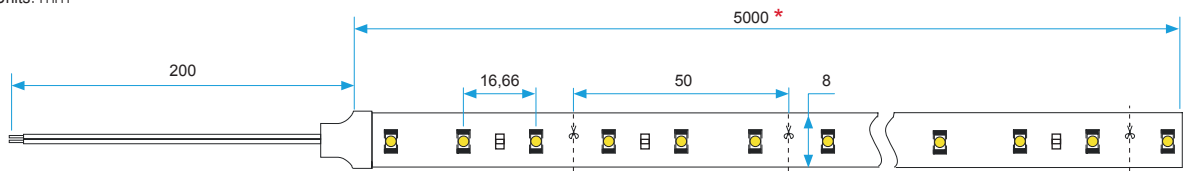
Operatin specification



Product size

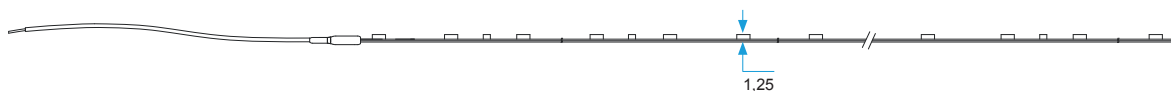
Front view

Units: mm



Side view

Units: mm



* 25 Length models are available for references DOMOX-2835-XX-001/25.
50 Length models are available for references DOMOX-2835-XX-001/50.

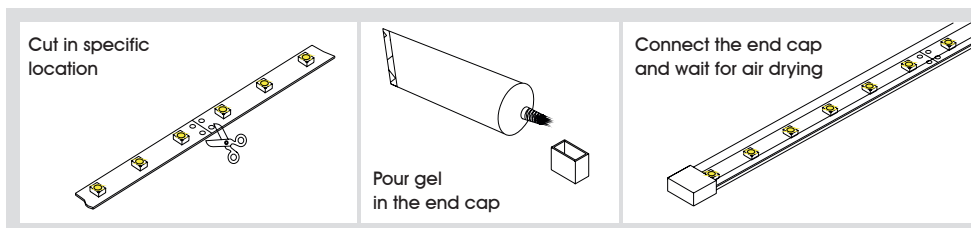
■ WATERPROOF MODEL

Features

- IP54 tightness with silicone coating.
- Resistance to high temperatures, high flexibility, anti UV, high optical transmittance ($\geq 92\%$), non-toxic.



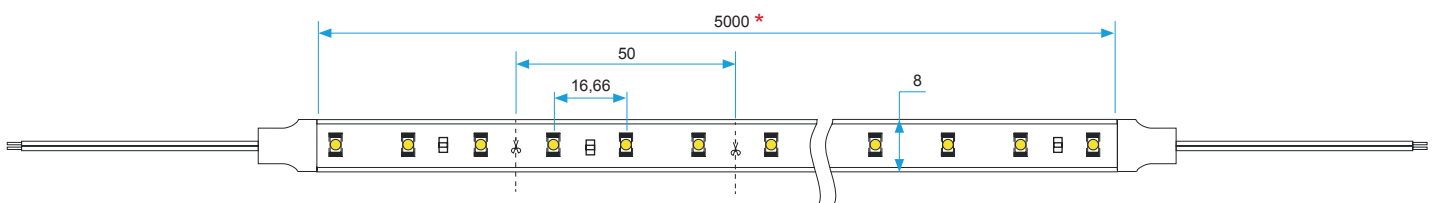
Handing



Product size

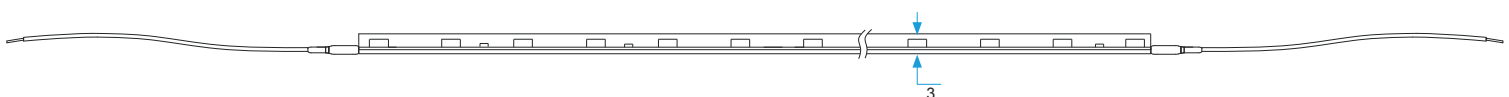
Front view

Units: mm



Side view

Units: mm



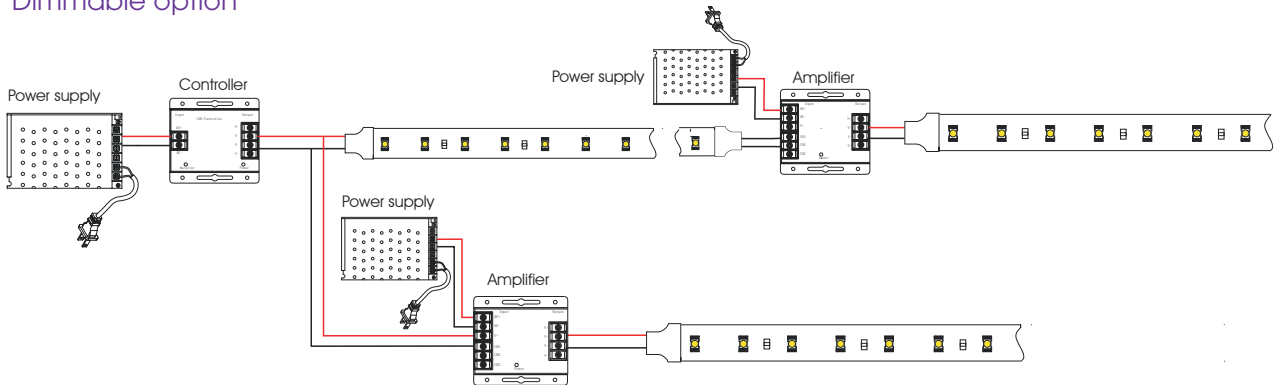
* 25 Length models are available for references DOMOX-2835-XX-001WP/25.
50 Length models are available for references DOMOX-2835-XX-001WP/50.

CONNECTION DIAGRAMS

Non dimmable option

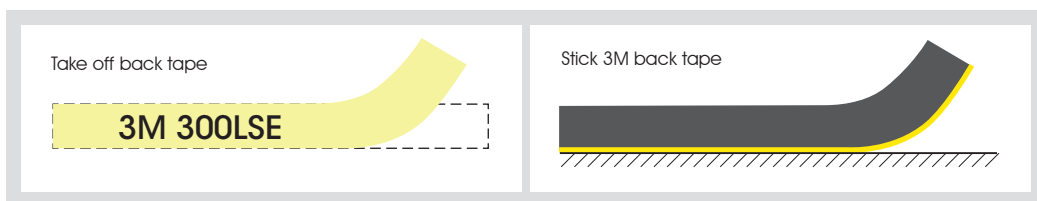
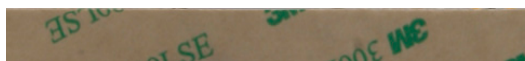


Dimmable option



Note:
To ensure the correct operation of the control system, it is recommended that negatives from all power supplies are connected together.

Adhesivo 3M 300LSE



PACKAGING

