

Standard series led strip

DOMOX-2835-XX-002(WP/WD)X

Dimmable strip with 120 SMD2835 leds per meter



Features

- High brightness SMD 2835 LEDs according to "LM80".
- Allows cutting by groups to facilitate its use.
- Uniform shine along its entire length.
- Powered at 24VDC, safe and suitable for universal use.
- "SDCM5" Selection of MacAdam "step5".
- "3M 300LSE" High performance adhesive.
- Standard color reproduction "CRI>83".
- Optional color reproduction "CRI>90".
- International certifications available.

* COMPLIANT WITH LM80:

The life of the LED diodes has been tested according to the LM80 standard to reach an expectation of 30,000 hours or more.

DOMOX-2835-XX-002(WP/WD)X

Standard series



Standard Grade High Efficiency LED Strip

120
Led/m

6
W/m

24V

Warranty up to
5
Years

≤960
lm/m

≤160
lm/w

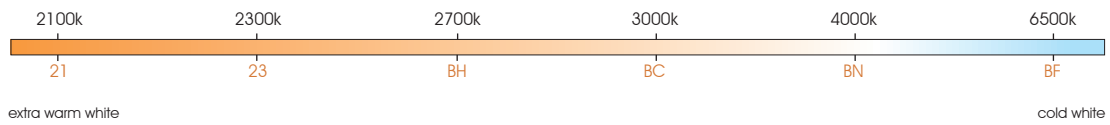
LED SMD
2835

MacAdam
5 level
SDCM
BIN1

standard
CRI
>83

optional
CRI
>90

White color temperature range



10 Max. meters in series
(one side powered)

3M
300
LSE

driver
NOT
included

120°

5m

8,33mm

5cm

30.000 h

20 Max. meters in series
(two side powered)

Do not bend

ESD

Dimmable

Alu profile
required

Working
50°C
-20°C

Storage
60°C
-40°C

Features

Part number	CCT / wavelength		Luminous intensity per m / flux	Efficiency lm / W	Energy efficiency	Ordinary strip	Strip with waterproof part number "WP" or "WD" suffix	
	IP20	IP54					IP54	IP67
DOMOX-2835-21-002(WP/WD)X	±2050~2150k	±2600k	±800lm	±133	D	 5000mm 1,25mm 8mm 5000mm 3mm 8mm 5000mm 3mm 10mm		
DOMOX-2835-23-002(WP/WD)X	±2250~2350k	±2900k	±800lm	±133	D			
DOMOX-2835-BH-002(WP/WD)X	±2650~2800k	±3100k	±860lm	±143	D			
DOMOX-2835-BC-002(WP/WD)X	±2950~3250k	±3500k	±860lm	±143	D			
DOMOX-2835-BN-002(WP/WD)X	±3800~4200k	±6000k	±960lm	±160	C			
DOMOX-2835-BF-002(WP/WD)X	±6400~6700k	±22000k	±960lm	±160	C			

Notes

25m
25 length models are available.

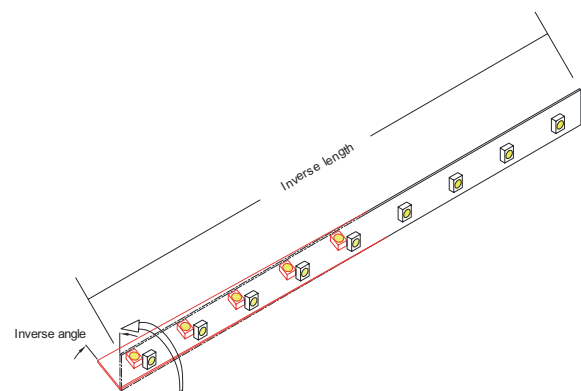
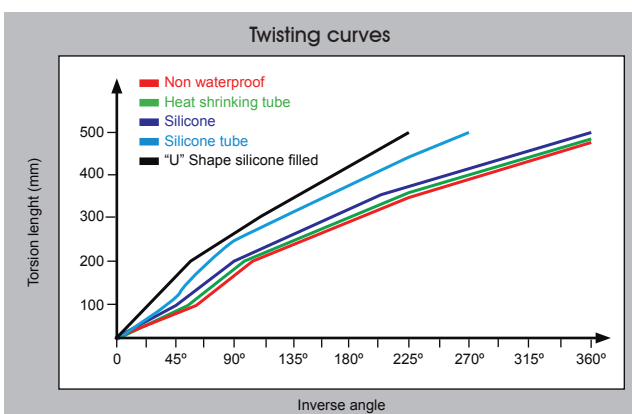
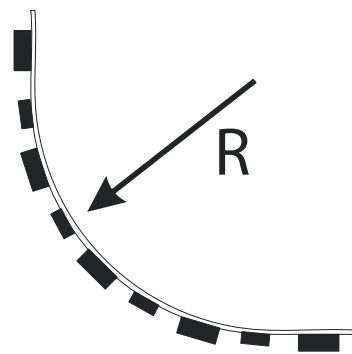
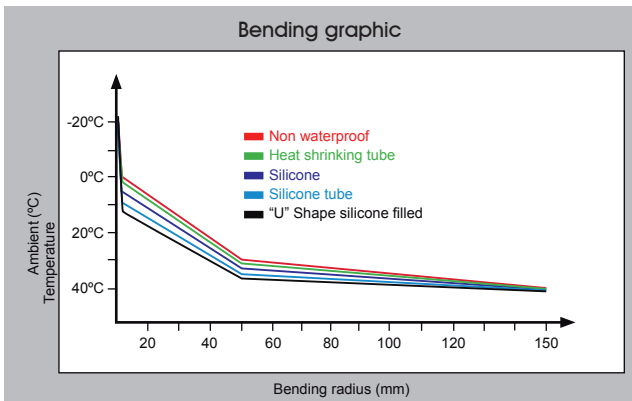
50m
50 length models are available under request. Contact to our Sales Department.

IP54
IP54 models 10m maximum

Specific parameters

Reference	Waterproof materials	Size (mm)	Connections	Fixing mode	IP rate
DOMOX-2835-BF-002X	Non waterproof	8x1.25mm	Wire red and black	Adhesive 3M 300 LSE	IP20
DOMOX-2835-BF-002WPX	Moulded silicone	8x3.0mm	Wire red and black	Adhesive 3M 300 LSE	IP54

Bending grades



Reference point: strip bending at 0°C.

NON-WATERPROOF MODEL

Features

- IP20 easier assembling 3M 300LSE.
- Small in size, light in weight, flexible.



Optional accesories

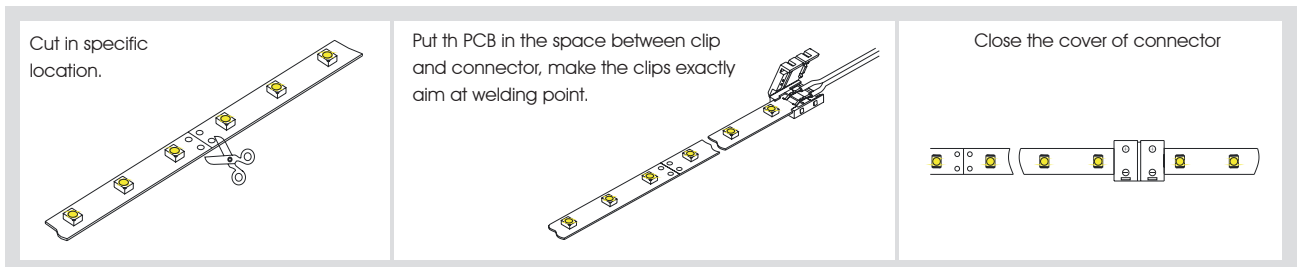


ACC8-JOIN-600



ACC8-CABLE-600

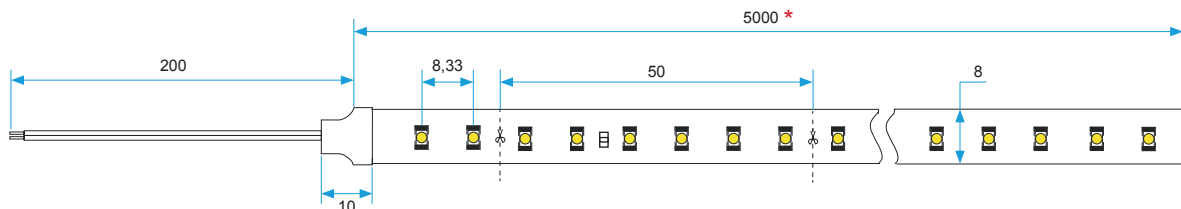
Operatin specification



Product size

Front view

Units: mm



Side view

Units: mm



* 25 Length models are available for references DOMOX-2835-XX-002X/25.
50 Length models are available for references DOMOX-2835-XX-002X/50.

* Other reel lengths available under request.

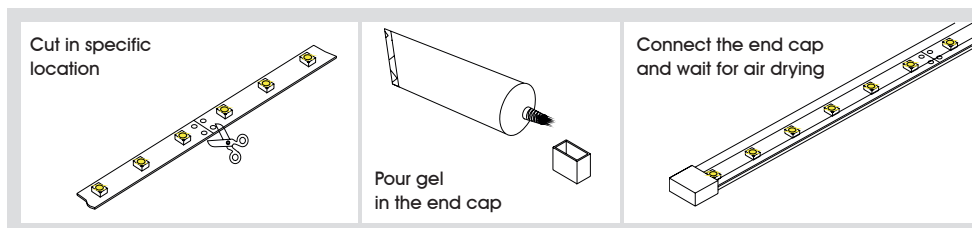
■ WATERPROOF MODEL

Features

- IP54 tightness with silicone coating.
- Resistance to high temperatures, high flexibility, anti UV, high optical transmittance ($\geq 92\%$), non-toxic.



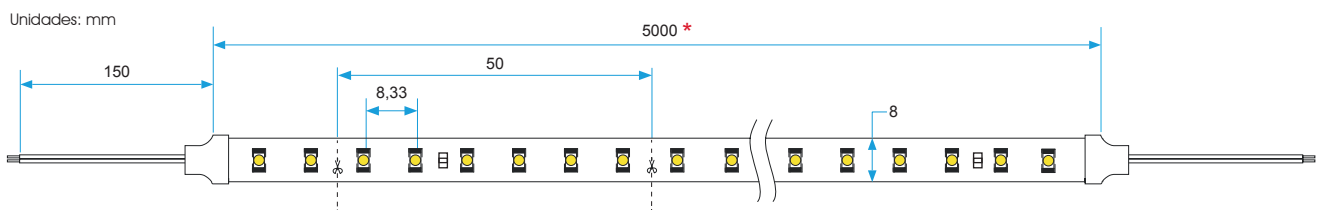
Handing



Product size (WP & WD versions)

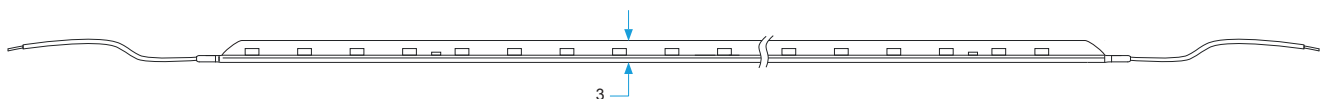
Front view

Units: mm



Side view

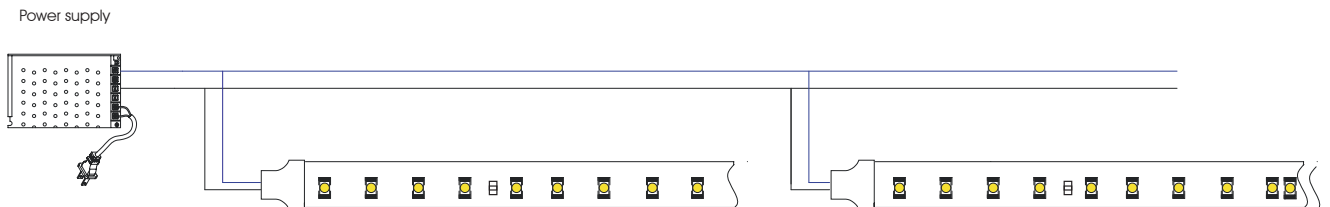
Units: mm



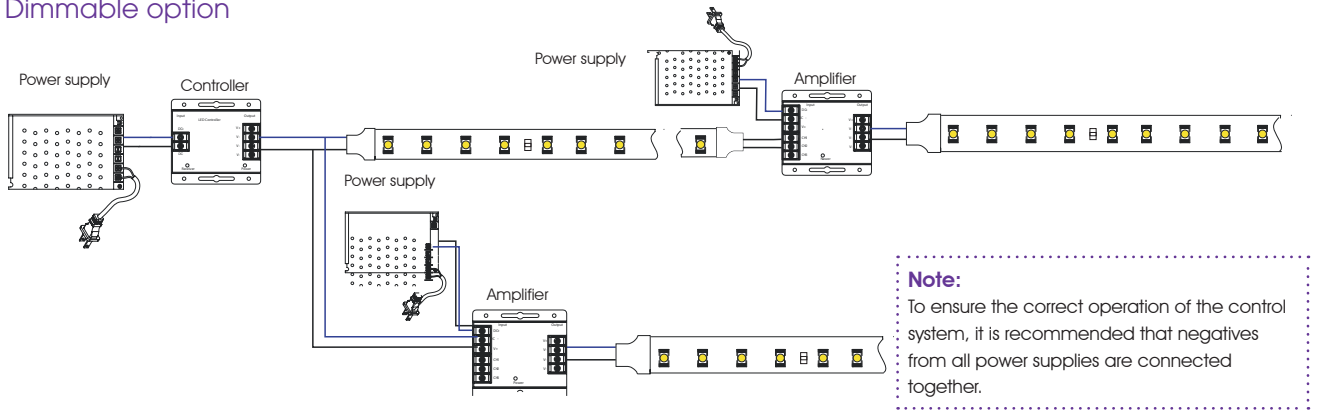
* Different reel lengths available request.

CONNECTION DIAGRAMS

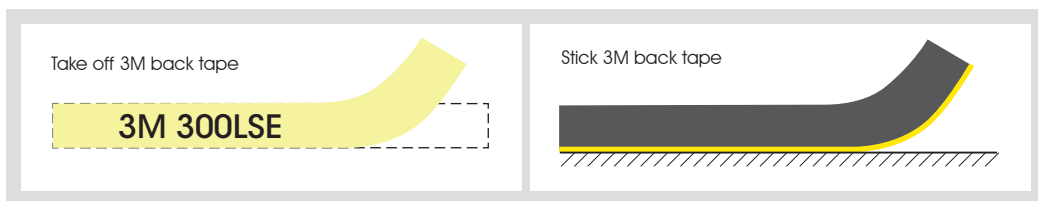
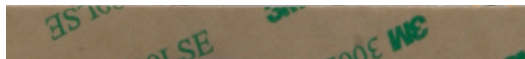
Non dimmable option



Dimmable option



Adhesive 3M LSE



PACKAGING

