

Led Strips Standard Series

DOMOX-3528-XX-001(WP)

Dimmable LED strip SMD3528 60 LED/m



Features

- Adpot SMD3528 LED as lighting sources.
- 5 meters per roll, possibility of cutting every 5cm.
- Good flexibility.
- Long lifespan(>30,000hours)
- Complete set of accessories for easier installation.

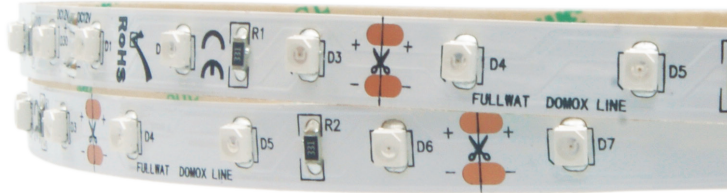
Applications

- Decorative lighting for hotel.
- Backlight for edge lighting/signage lighting.
- Factories or offices.
- Holiday decorative lights, display and exhibition lighting.
- Residential or public facilities.
- Decorative lights for holiday, event, show.

* LM80 CERTIFIED:
LED LIFESPAN tested under LM80;
Expected LIFETIME of 30,000h.

DOMOX-3528-XX-001(WP)

Standard series



Dimmable LED strip SMD3528 60 LED/m

60 Led/m 4,8 W/m 12V 

≤375 lm/m 



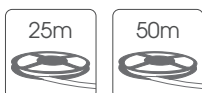
10 Max. meters in series (one side powered) 3M 300 LSE driver NOT included 120° 5m 16,6mm 5cm 30.000 h

20 Max. meters in series (two side powered) Do not bend ESD Dimeable Alu profile required Working 50°C -20°C Storage 60°C -40°C

Features

Part number	CCT / wavelength	Luminous intensity per m / flux	Efficiency lm / W	Ordinary strip	Strip with waterproof part number "WP" suffix
 DOMOX-3528-AB-001(WP)	±587~593nm	±150lm	±31	 	 
 DOMOX-3528-AZ-001(WP)	±455~470nm	±115lm	±24		
 DOMOX-3528-RO-001(WP)	±615~625nm	±150lm	±31		
 DOMOX-3528-VE-001(WP)	±520~530nm	±375lm	±78		

Notes

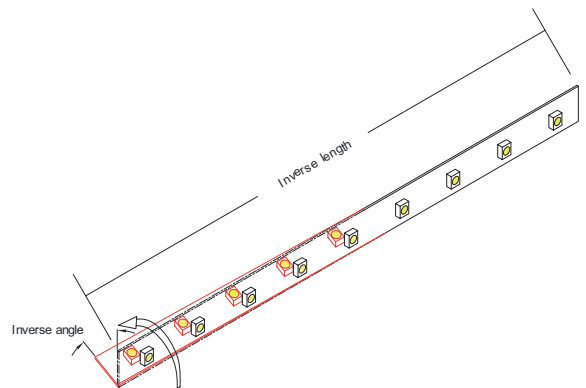
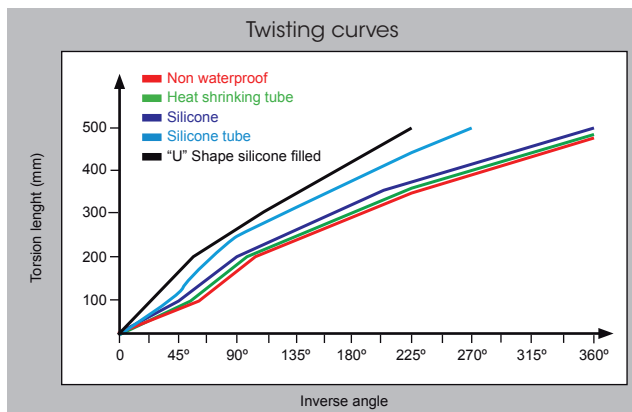
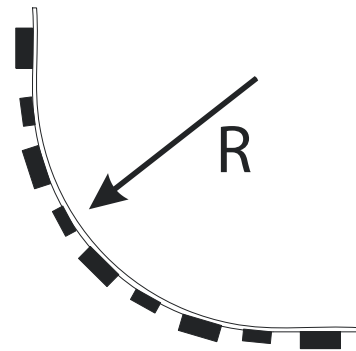
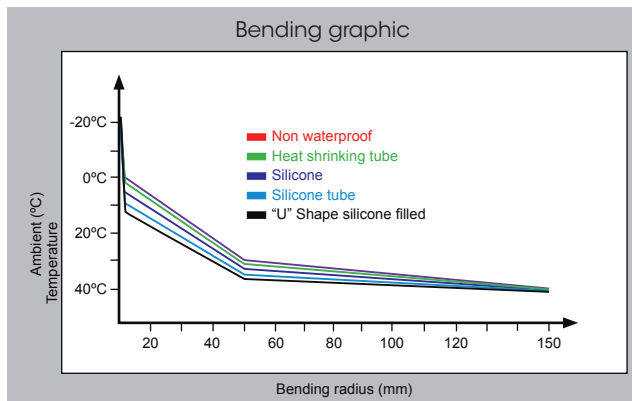


25/50 Length models are available under request. Contact to our Sales Department.

Specific parameters

Reference	Waterproof materials	Size (mm)	Connections	Fixing mode	IP rate
DOMOX-3528-XX-001	NonWaterproof	10x1,25	Silicone wire red and white	Adhesive 3M 300 LSE	IP20
DOMOX-3528-XX-001WP	D moulded silicone	10x3	Silicone wire red and white	Adhesive 3M 300 LSE	IP54

Bending grades



Reference point: strip bending at 0°C.

NON WATERPROOF MODEL

Features

- With 3M 300LSE adhesive tape, it is easy for installation. IP20.
- Small in size, light in weight, flexible.

Optional accesories

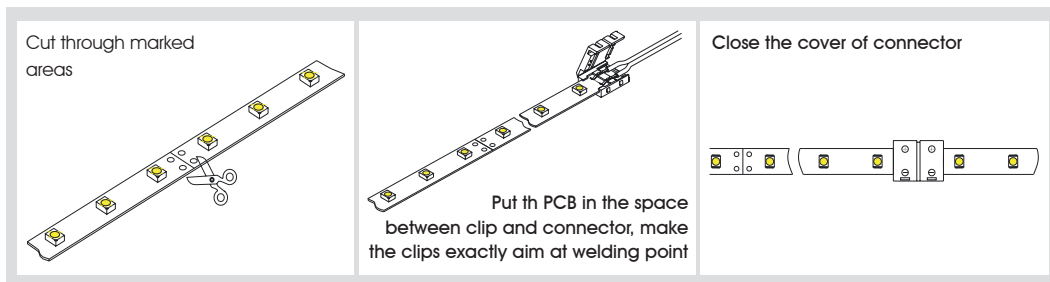


ACC8-JOIN-300



ACC8-CABLE-300

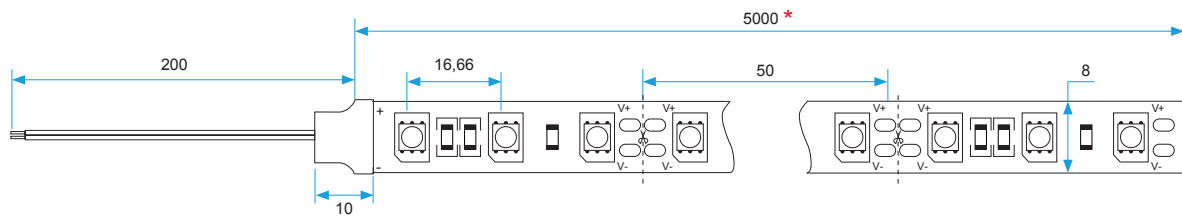
Operation specification



Product size

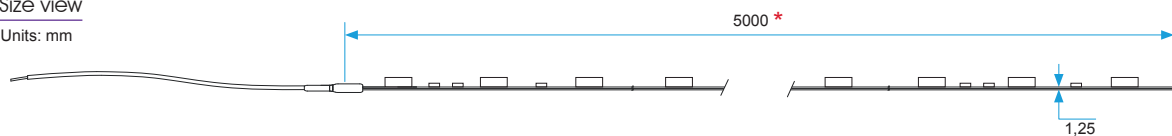
Front view

Units: mm



Size view

Units: mm



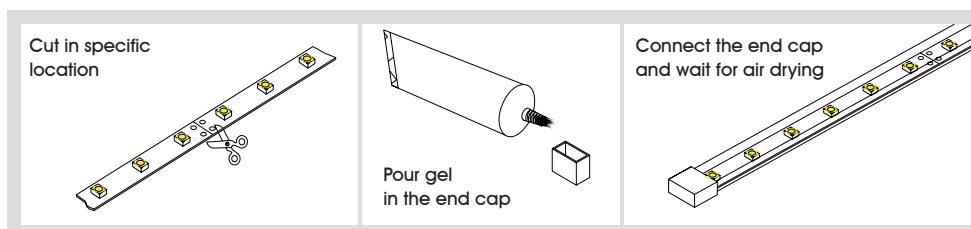
* 25 meter models for references DOMOX-3528-XX-001/25.
50 meter models for references DOMOX-3528-XX-001/50.

■ WATERPROOF MODEL

Features

- The strip is well protected by silicone tube IP54.
- High temperature resistance high flexibility, anti UV, high light transmittance ($\geq 92\%$), non-toxic.

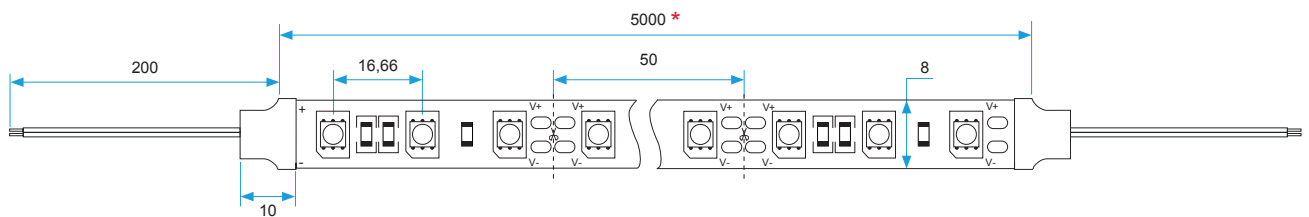
Operation specification



Product size

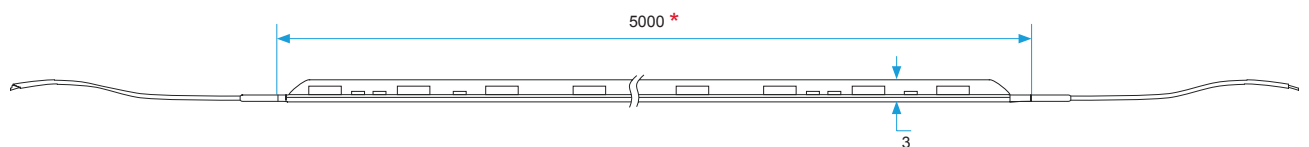
Front view

Units: mm



Size view

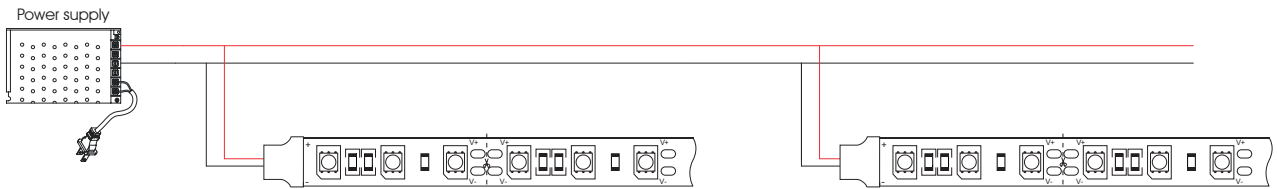
Units: mm



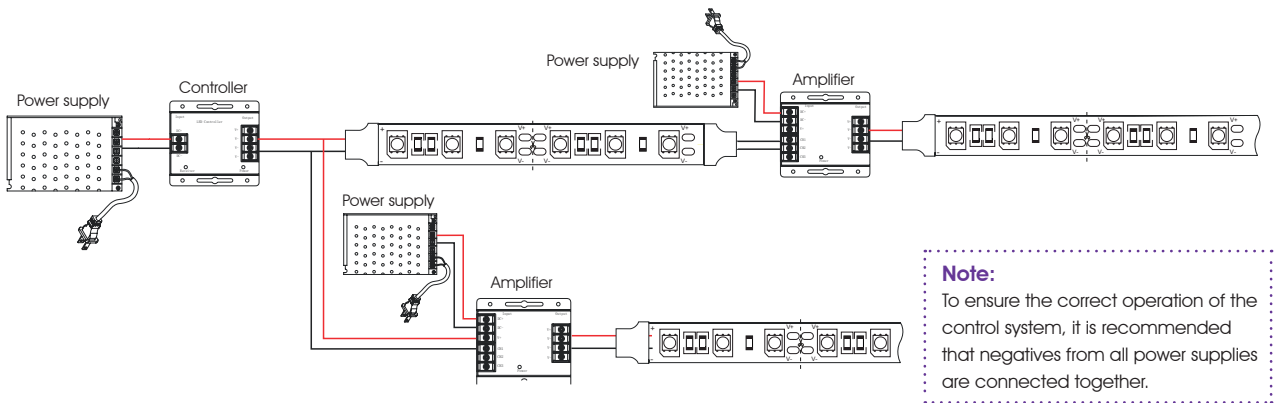
* 25 meter models for references DOMOX-3528-XX-001WP/25.
50 meter models for references DOMOX-3528-XX-001WP/50.

CONNECTION DIAGRAMS

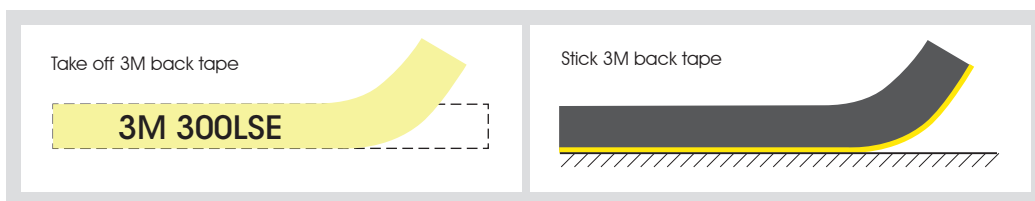
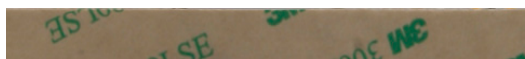
Non dimmable option



Dimmable option



Adhesive 3M 300LSE



PACKAGING

