

## Led Strips Professional Series

FU-BLF-2216-(XX)-4x

Dimmable LED strip SMD2216 300 LED/m



### Features

**New PCB with ADF Technology**, 50% thicker than previous one to improve cooling rating.

High Performance LM80 certified 2216 type leds

It allows the cutting by groups to facilitate its use.

Uniform brightness throughout its entire length.

24 VDC power supply to get better reliability

"SDCM 3" MacAdam selection "step3"

Highest performance original 3M VHB back adhesive tape.

CRI>80 standard rate.

CRI<90 optional rate under request.

CE, LVD & EMC European certificates available.

\* LM80 CERTIFIED:  
LED LIFESPAN tested under LM80;  
Expected LIFETIME of 30,000h.

**FU-BLF-2216-XX-4X**

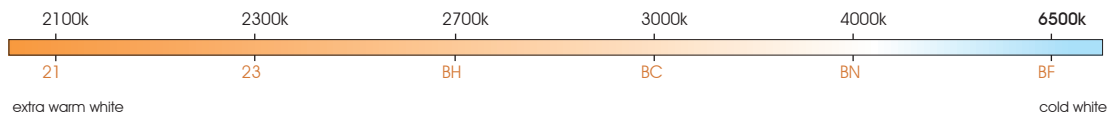
Professional series

Dimmable LED strip SMD2216 300 LED/m



- 300 Led/m
- 24 W/m
- 24V
- Warranty up to 7 Years
- ≤2700 lm/m
- LED SMD 2216
- MacAdam 3 level SDCM BIN1
- standard CRI >83
- optional CRI >90

White color temperature range



- 2.5 Max. meters in series (one side powered)
- VHB 3M
- driver NOT included
- 120°
- 5m
- 3.33mm
- 2cm
- 30,000 h
- 5 Max. meters in series (two side powered)
- ADF PCB
- Do not blend
- ESD
- Dimmable
- HIGH POWER Alu profile required
- Working 50°C -20°C
- Storage 60°C -40°C

**Features**

Part number	CCT / wavelength	Luminous intensity per m / flux	Efficiency lm / W	Energy efficiency	Ordinary strip
FU-BLF-2216-21-4X	±2050~2150k	±1800lm	±75	<b>G</b>	 
FU-BLF-2216-23-4X	±2250~2350k	±1950lm	±81	<b>F</b>	
FU-BLF-2216-BH-4X	±2700~2800k	±2250lm	±94	<b>F</b>	
FU-BLF-2216-BC-4X	±2950~3100k	±2400lm	±100	<b>F</b>	
FU-BLF-2216-BN-4X	±3900~4100k	±2550lm	±106	<b>E</b>	
FU-BLF-2216-BF-4X	±6400~6600k	±2700lm	±113	<b>E</b>	

**Notes**

Waterproof led strips covered by silicone material use to suffer an unavoidable CCT value modification owing to optical effect caused when light beam passes through material.  
Initial CCT values are increased several hundreds or thousands of °K. This increasing is much higher in coldest white CCTs. New FULLWAT molded silicone system avoids this effect and our waterproof led strips are CCT rated at original value without modification.  
Please, contact with your local sales office to get wider details.

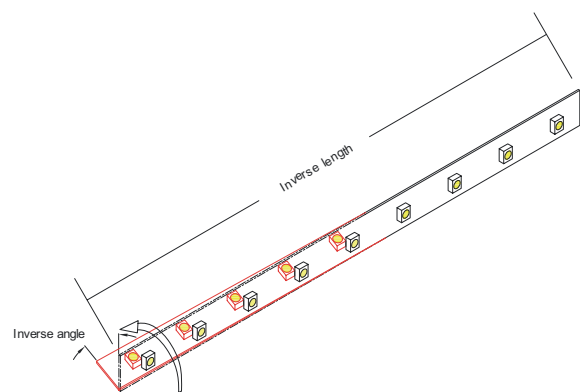
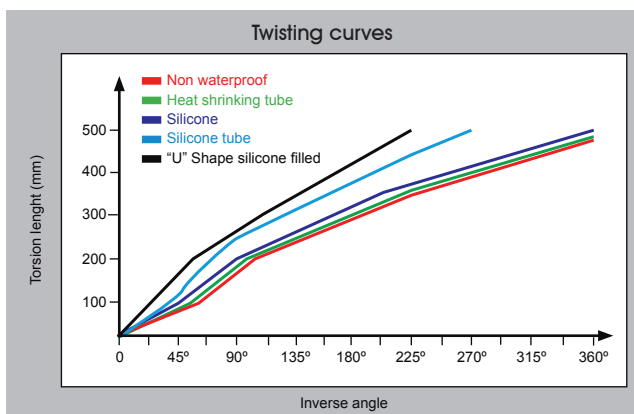
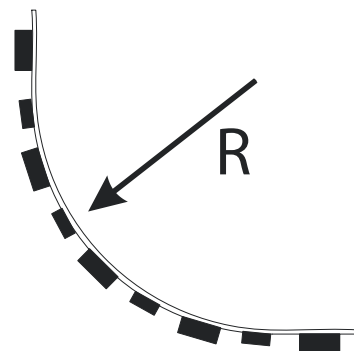
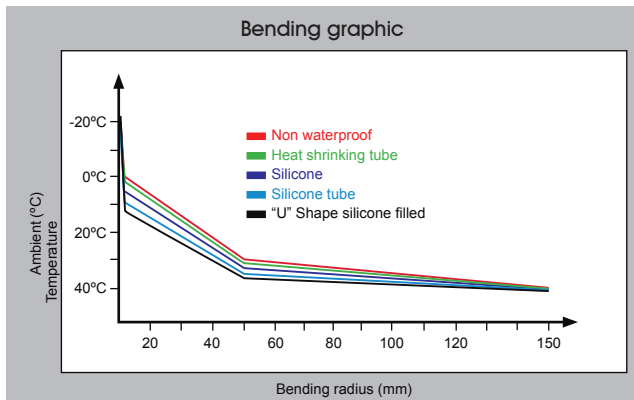
25m  
25 length models are available.

50m  
50 length models are available under request. Contact to our Sales Department.

Specific parameters

Reference	Waterproof materials	Size (mm)	Connections	Mode of fixation	IP rate
FU-BLF-2216-BF-4X	Non waterproof	6x1.25	Silicone wire red and white	Adhesive 3M VHB	IP20

Bending grades



Reference point: strip bending at 0°C.

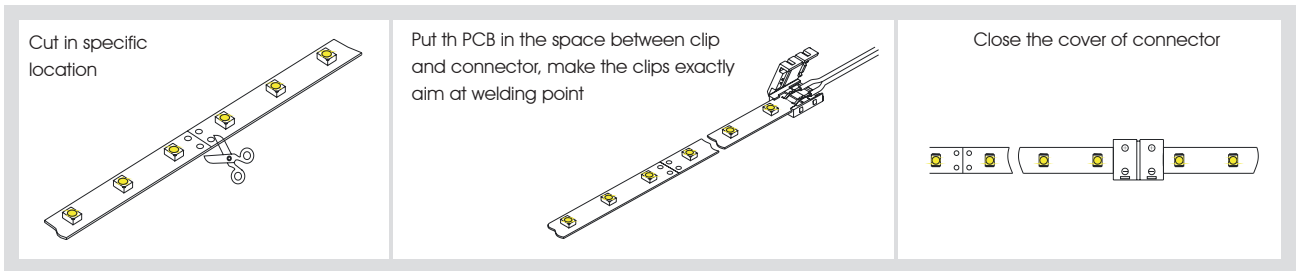
**■ NON-WATERPROOF MODEL**

Features

- IP20 easier assembling 3M VHB.
- Small in size, light in weight, flexible.



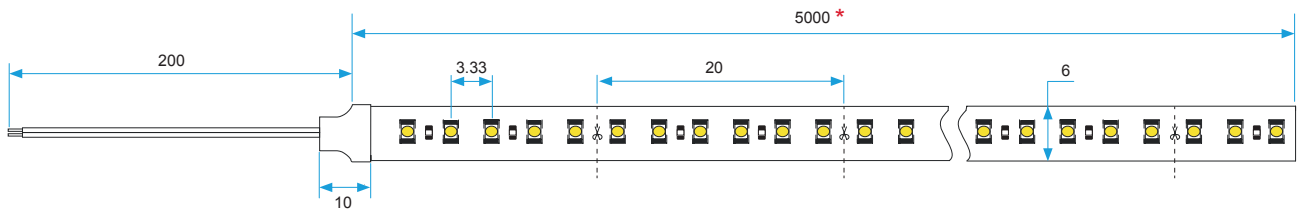
Operation specification



Product size

Front view

Units: mm



Side view

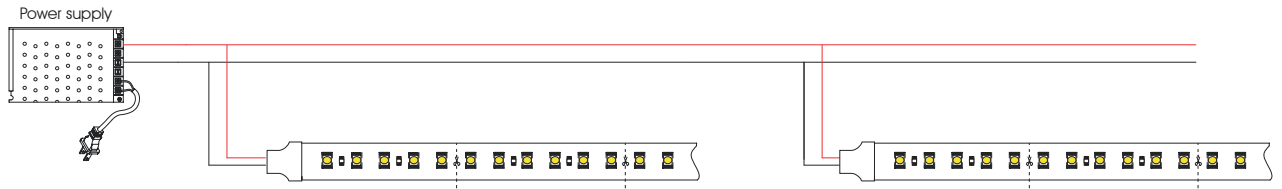
Units: mm



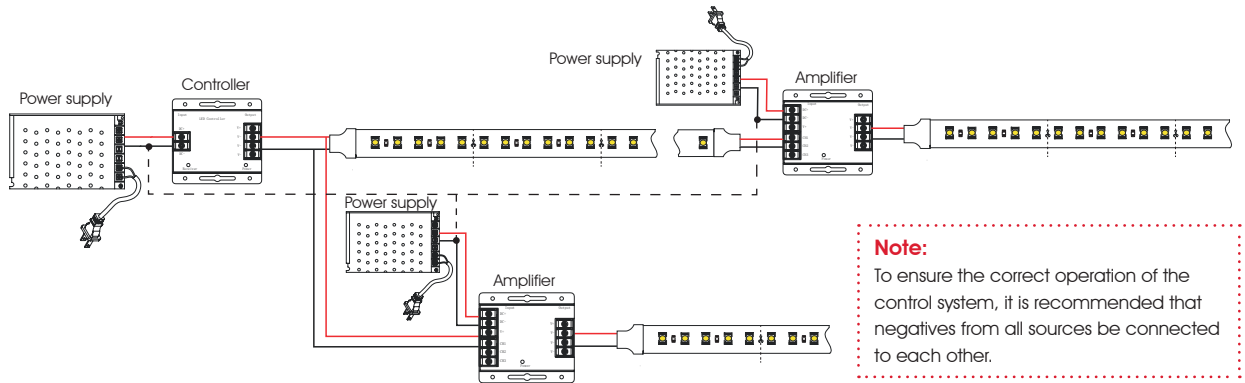
\* 25 length models are available for references FU-BLF-2216-XX-4X/25.  
50 length models are available for references FU-BLF-2216-XX-4X/50.

**CONNECTION DIAGRAMS**

Non dimmable option



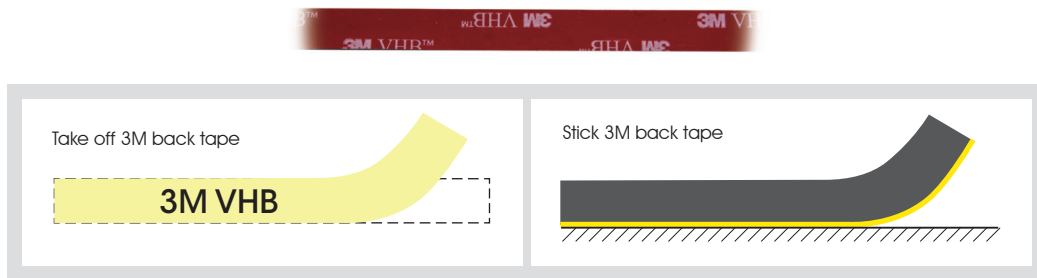
Dimmable option



**Note:**  
To ensure the correct operation of the control system, it is recommended that negatives from all sources be connected to each other.

**INSTALLATION**

Adhesive 3M VHB



**PACKAGING**

