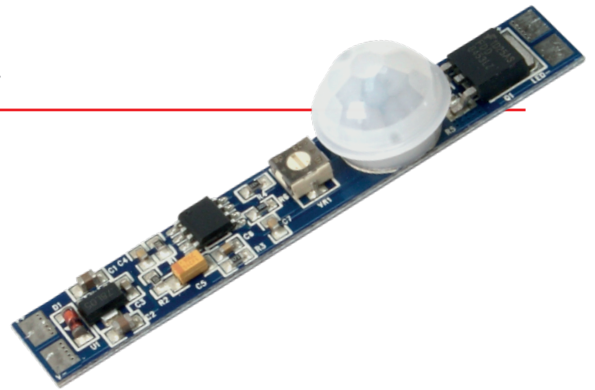




SENS-P-PIR-1 PIR Sensor Switch



Description	Dimension	Voltage	Load
Sensor Switch	10 x 62.5mm	12-24VDC	Max. 2.5 Amps.



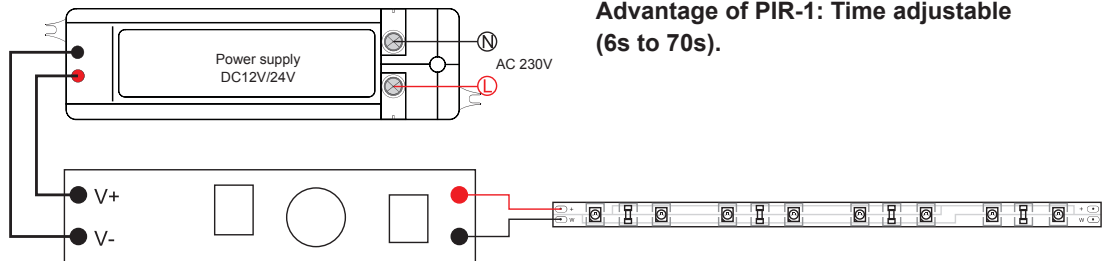
Functions

- Input voltage: 12-24VDC.
- Current: 2.5A max.
- Power: 30W for 12V, or 60W for 24V.
- Delay Time: Adjustable about 6-70S.
- Detection Range: ≤ 2 meters.
- Automatically ON/OFF.

Operation

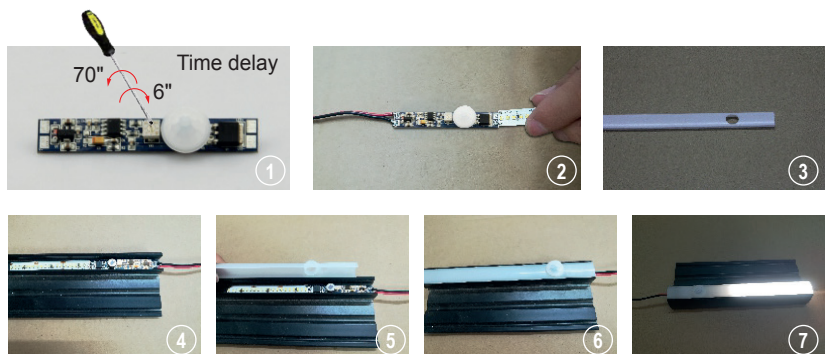
PIR Sensor Switch SENS-P-PIR-1 is to be assembled into lighting fixtures, so the lighting fixture can automatically turn on when any part of human body is approaching within 2 meters from the sensor. The lighting fixture equipped with this PIR Sensor will stay on if the human body stays within 2 meters from the sensor.

Advantage of PIR-1: Time adjustable (6s to 70s).



Installation

- Cut a 10.5mm hole at the fixture
- Put the Detector Head into the 10.5mm hole
- Connect wires to the input end and output end of the control PCB.



Notice

1. Avoid being exposed to sunlight, auto bulb and incandescent lamp, neither to heat source (such as radiator and heater), or air conditioner, in case of faulty detection caused by ambient temperature change.
2. Sensor switches must be firmly installed, in case of faulty detection from wind shaking.
3. Don't touch the surface of detector.
4. Regularly clean the optical lens surface with wet soft cloth or cotton, in case dust influence the sensitivity.